



DCL-1 Polyclonal Antibody

Catalog No	YP-Ab-14032
Isotype	IgG
Reactivity	Human;Rat;Mouse;
Applications	WB;ELISA
Gene Name	CD302
Protein Name	CD302 antigen
Immunogen	The antiserum was produced against synthesized peptide derived from the Internal region of human CD302. AA range:81-130
Specificity	DCL-1 Polyclonal Antibody detects endogenous levels of DCL-1 protein.
Formulation	Liquid in PBS containing 50% glycerol, 0.5% BSA and 0.02% sodium azide.
Source	Polyclonal, Rabbit,IgG
Purification	The antibody was affinity-purified from rabbit antiserum by affinity-chromatography using epitope-specific immunogen.
Dilution	Western Blot: 1/500 - 1/2000. ELISA: 1/20000. Not yet tested in other applications.
Concentration	1 mg/ml
Purity	≥90%
Storage Stability	-20°C/1 year
Synonyms	CD302; CLEC13A; DCL1; KIAA0022; CD302 antigen; C-type lectin BIMLEC; C-type lectin domain family 13 member A; DEC205-associated C-type lectin 1; Type I transmembrane C-type lectin receptor DCL-1; CD302
Observed Band	26kD
Cell Pathway	Membrane ; Single-pass type I membrane protein . Cell projection, filopodium . Cytoplasm, cell cortex . Cell projection, microvillus . Colocalizes with F-actin in filopodia, cellular cortex and microvilli of the apical cell surface.
Tissue Specificity	Expressed at moderate levels in monocytes, myeloid blood dendritic cells and granulocytes and at low levels in plasmacytoid blood dendritic cells, monocyte-derived macrophages and monocyte-derived dendritic cells, with no expression detected in T-lymphocytes, B-lymphocytes and natural killer cells (at protein level). Expressed widely in different tissues, with highest expression levels in liver, lung, peripheral blood leukocytes and spleen, and lowest levels in neuronal tissues, skeletal muscle and ovary. Isoform 2 and isoform 3 are expressed in malignant Hodgkin lymphoma cells called Hodgkin and Reed-Sternberg (HRS) cells.
Function	function:Acts as an endocytic receptor to direct captured antigens from the extracellular space to a specialized antigen-processing compartment (By similarity). Causes reduced proliferation of B-lymphocytes. miscellaneous:Isoform 2 and isoform 3 are produced in HRS cells by a transcriptional control mechanism



which cotranscribe an mRNA containing LY75 and CD302 prior to generating the intergenically spliced mRNA to produce LY75/CD302 fusion proteins.,online information:DEC-205,PTM:N-glycosylated.,similarity:Contains 1 C-type lectin domain.,similarity:Contains 1 fibronectin type-II domain.,similarity:Contains 1 ricin B-type lectin domain.,similarity:Contains 10 C-type lectin domains.,tissue specificity:Expressed in myeloid and B lymphoid cell lines. Isoform 2 and isoform 3 are expressed in malignant Hodgkin's lymphoma cells called Hodgkin's and Reed-Sternberg (HRS) cells.,tissue specific

Background

CD302 is a C-type lectin receptor involved in cell adhesion and migration, as well as endocytosis and phagocytosis (Kato et al., 2007 [PubMed 17947679]).[supplied by OMIM, Aug 2008],

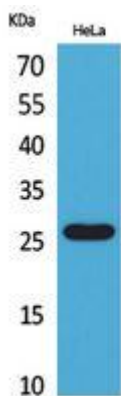
matters needing attention

Avoid repeated freezing and thawing!

Usage suggestions

This product can be used in immunological reaction related experiments. For more information, please consult technical personnel.

Products Images



Western Blot analysis of HeLa cells using DCL-1 Polyclonal Antibody. Secondary antibody(catalog#:RS0002) was diluted at 1:20000