



CD223 Polyclonal Antibody

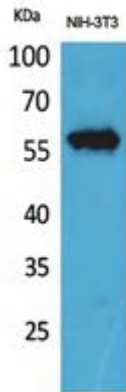
Catalog No	YP-Ab-14036
Isotype	IgG
Reactivity	Human;Rat;Mouse;
Applications	WB;ELISA
Gene Name	LAG3
Protein Name	Lymphocyte activation gene 3 protein
Immunogen	The antiserum was produced against synthesized peptide derived from the Internal region of human LAG3. AA range:91-140
Specificity	CD223 Polyclonal Antibody detects endogenous levels of CD223 protein.
Formulation	Liquid in PBS containing 50% glycerol, 0.5% BSA and 0.02% sodium azide.
Source	Polyclonal, Rabbit,IgG
Purification	The antibody was affinity-purified from rabbit antiserum by affinity-chromatography using epitope-specific immunogen.
Dilution	Western Blot: 1/500 - 1/2000. ELISA: 1/20000. Not yet tested in other applications.
Concentration	1 mg/ml
Purity	≥90%
Storage Stability	-20°C/1 year
Synonyms	LAG3; FDC; Lymphocyte activation gene 3 protein; LAG-3; Protein FDC; CD223
Observed Band	57kD
Cell Pathway	[Lymphocyte activation gene 3 protein]: Cell membrane ; Single-pass type I membrane protein .; [Secreted lymphocyte activation gene 3 protein]: Secreted . Produced following cleavage of the main chain. .
Tissue Specificity	Primarily expressed in activated T-cells and a subset of natural killer (NK) cells.
Function	function:Involved in lymphocyte activation. Binds to HLA class-II antigens.,similarity:Contains 1 Ig-like V-type (immunoglobulin-like) domain.,similarity:Contains 3 Ig-like C2-type (immunoglobulin-like) domains.,tissue specificity:On cell surface of activated NK and T-lymphocytes.,
Background	Lymphocyte-activation protein 3 belongs to Ig superfamily and contains 4 extracellular Ig-like domains. The LAG3 gene contains 8 exons. The sequence data, exon/intron organization, and chromosomal localization all indicate a close relationship of LAG3 to CD4. [provided by RefSeq, Jul 2008],
matters needing attention	Avoid repeated freezing and thawing!



Usage suggestions

This product can be used in immunological reaction related experiments. For more information, please consult technical personnel.

Products Images



Western Blot analysis of NIH-3T3 cells using CD223 Polyclonal Antibody. Secondary antibody(catalog#:RS0002) was diluted at 1:20000