



NKp44 Polyclonal Antibody

Catalog No	YP-Ab-14037
Isotype	IgG
Reactivity	Human;Rat;Mouse;
Applications	WB;IHC;IF;ELISA
Gene Name	NCR2
Protein Name	Natural cytotoxicity triggering receptor 2
Immunogen	The antiserum was produced against synthesized peptide derived from the Internal region of human NCR2. AA range:61-110
Specificity	NKp44 Polyclonal Antibody detects endogenous levels of NKp44 protein.
Formulation	Liquid in PBS containing 50% glycerol, 0.5% BSA and 0.02% sodium azide.
Source	Polyclonal, Rabbit,IgG
Purification	The antibody was affinity-purified from rabbit antiserum by affinity-chromatography using epitope-specific immunogen.
Dilution	WB: 1/500 - 1/2000. IHC-p: 1/100-1/300. ELISA: 1/20000.. IF 1:50-200
Concentration	1 mg/ml
Purity	≥90%
Storage Stability	-20°C/1 year
Synonyms	NCR2; LY95; Natural cytotoxicity triggering receptor 2; Lymphocyte antigen 95 homolog; NK cell-activating receptor; Natural killer cell p44-related protein; NK-p44; NKp44; CD336
Observed Band	44kD
Cell Pathway	Cell membrane ; Single-pass type I membrane protein .
Tissue Specificity	Selectively expressed by activated NK cells and by in vitro cultured (i.e. activated) TCRg/d lymphoid cells.
Function	function:Cytotoxicity-activating receptor that may contribute to the increased efficiency of activated natural killer (NK) cells to mediate tumor cell lysis.,similarity:Belongs to the natural cytotoxicity receptor (NCR) family.,similarity:Contains 1 Ig-like (immunoglobulin-like) domain.,subunit:Interacts with TYROBP/DAP12.,tissue specificity:Selectively expressed by activated NK cells and by in vitro cultured (i.e. activated) TCRg/d lymphoid cells.,
Background	function:Cytotoxicity-activating receptor that may contribute to the increased efficiency of activated natural killer (NK) cells to mediate tumor cell lysis.,similarity:Belongs to the natural cytotoxicity receptor (NCR) family.,similarity:Contains 1 Ig-like (immunoglobulin-like) domain.,subunit:Interacts with TYROBP/DAP12.,tissue specificity:Selectively



expressed by activated NK cells and by in vitro cultured (i.e. activated) TCRg/d lymphoid cells.,

matters needing attention

Avoid repeated freezing and thawing!

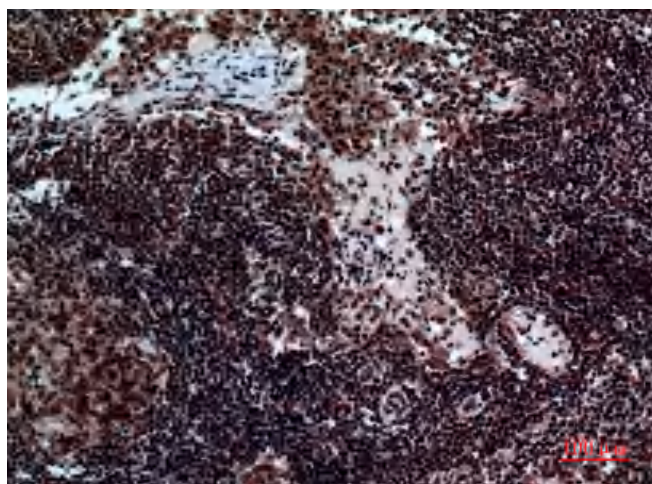
Usage suggestions

This product can be used in immunological reaction related experiments. For more information, please consult technical personnel.

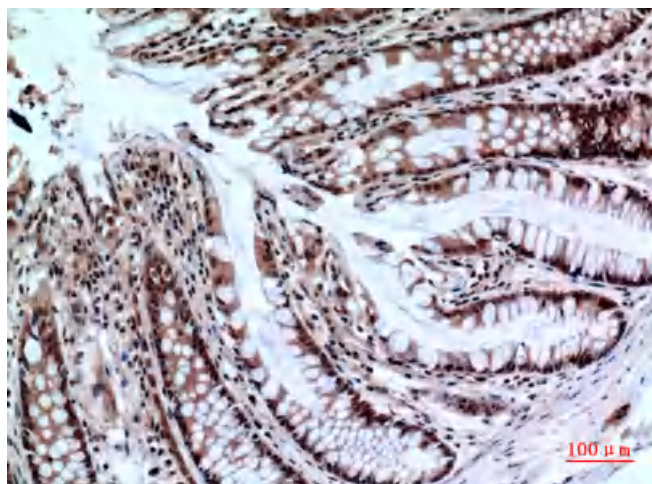
Products Images



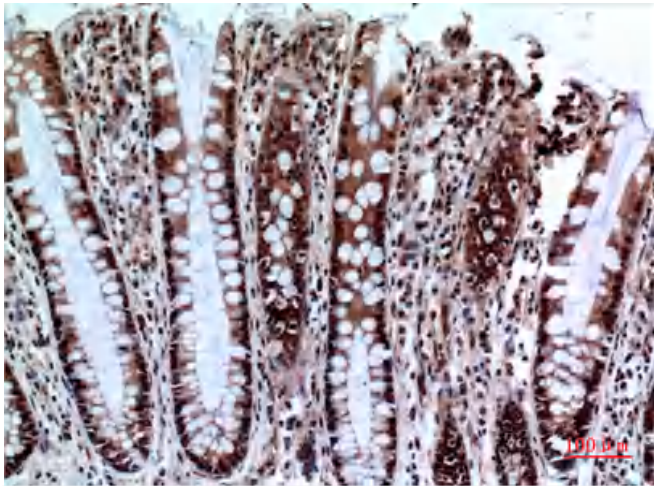
Western Blot analysis of PC-12 cells using NKp44 Polyclonal Antibody. Secondary antibody(catalog#:RS0002) was diluted at 1:20000



Immunohistochemical analysis of paraffin-embedded human-Lymph-nodes, antibody was diluted at 1:100



Immunohistochemical analysis of paraffin-embedded human-colon, antibody was diluted at 1:100



Immunohistochemical analysis of paraffin-embedded human-colon, antibody was diluted at 1:100