



# Ox40L Polyclonal Antibody

<b>Catalog No</b>	YP-Ab-14070
<b>Isotype</b>	IgG
<b>Reactivity</b>	Human;Rat;Mouse;
<b>Applications</b>	WB;IHC;IF;ELISA
<b>Gene Name</b>	TNFSF4
<b>Protein Name</b>	Tumor necrosis factor ligand superfamily member 4
<b>Immunogen</b>	The antiserum was produced against synthesized peptide derived from the Internal region of human TNFSF4. AA range:31-80
<b>Specificity</b>	Ox40L Polyclonal Antibody detects endogenous levels of Ox40L protein.
<b>Formulation</b>	Liquid in PBS containing 50% glycerol, 0.5% BSA and 0.02% sodium azide.
<b>Source</b>	Polyclonal, Rabbit,IgG
<b>Purification</b>	The antibody was affinity-purified from rabbit antiserum by affinity-chromatography using epitope-specific immunogen.
<b>Dilution</b>	Western Blot: 1/500 - 1/2000. IHC-p: 1:100-1:300. IF: 1:100-1:300. ELISA: 1/10000. Not yet tested in other applications.
<b>Concentration</b>	1 mg/ml
<b>Purity</b>	≥90%
<b>Storage Stability</b>	-20°C/1 year
<b>Synonyms</b>	TNFSF4; TXGP1; Tumor necrosis factor ligand superfamily member 4; Glycoprotein Gp34; OX40 ligand; OX40L; TAX transcriptionally-activated glycoprotein 1; CD252
<b>Observed Band</b>	21kD
<b>Cell Pathway</b>	Membrane; Single-pass type II membrane protein.
<b>Tissue Specificity</b>	Testis,
<b>Function</b>	disease:Genetic variation in TNFSF4 influences susceptibility to systemic lupus erythematosus (SLE) [MIM:152700]. SLE is a chronic, inflammatory and often febrile multisystemic disorder of connective tissue. It affects principally the skin, joints, kidneys and serosal membranes. It is thought to represent a failure of the regulatory mechanisms of the autoimmune system.,function:Cytokine that binds to TNFRSF4. Co-stimulates T-cell proliferation and cytokine production.,induction:By human T-cell leukemia virus type I transactivator P40-TAX.,similarity:Belongs to the tumor necrosis factor family.,subunit:Homotrimer.,
<b>Background</b>	This gene encodes a cytokine of the tumor necrosis factor (TNF) ligand family. The encoded protein functions in T cell antigen-presenting cell (APC) interactions and mediates adhesion of activated T cells to endothelial cells. Polymorphisms in



this gene have been associated with Sjogren's syndrome and systemic lupus erythematosus. Alternative splicing results in multiple transcript variants. [provided by RefSeq, Jul 2014],

**matters needing attention**

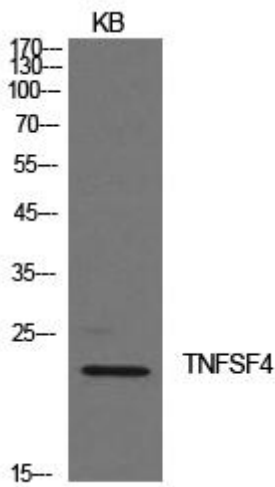
Avoid repeated freezing and thawing!

**Usage suggestions**

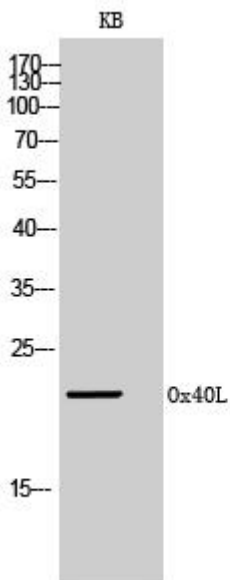
This product can be used in immunological reaction related experiments. For more information, please consult technical personnel.



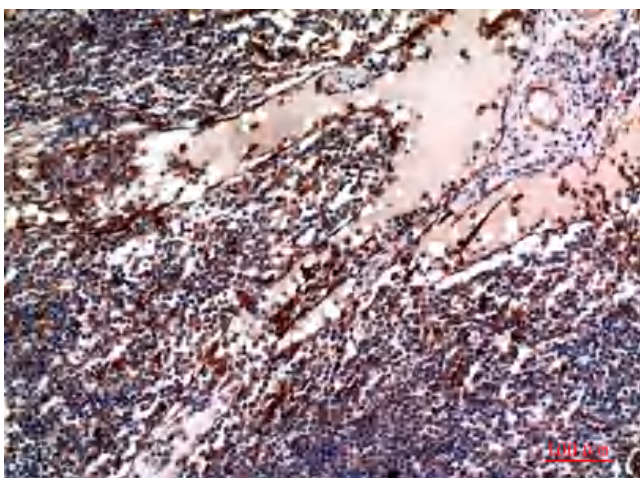
## Products Images



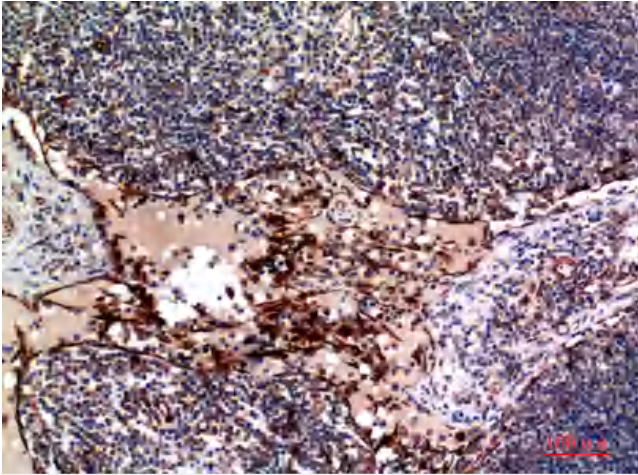
Western Blot analysis of KB cells using Ox40L Polyclonal Antibody. Secondary antibody(catalog#:RS0002) was diluted at 1:20000



Western Blot analysis of KB cells using Ox40L Polyclonal Antibody. Secondary antibody(catalog#:RS0002) was diluted at 1:20000



Immunohistochemical analysis of paraffin-embedded human-lymph, antibody was diluted at 1:100



Immunohistochemical analysis of paraffin-embedded human-lymph, antibody was diluted at 1:100