



Dectin-2 Polyclonal Antibody

Catalog No	YP-Ab-14087
Isotype	IgG
Reactivity	Human;Rat;Mouse;
Applications	WB;IHC;IF;ELISA
Gene Name	CLEC6A
Protein Name	C-type lectin domain family 6 member A
Immunogen	Synthesized peptide derived from the Internal region of human Dectin-2.
Specificity	Dectin-2 Polyclonal Antibody detects endogenous levels of Dectin-2 protein.
Formulation	Liquid in PBS containing 50% glycerol, 0.5% BSA and 0.02% sodium azide.
Source	Polyclonal, Rabbit,IgG
Purification	The antibody was affinity-purified from rabbit antiserum by affinity-chromatography using epitope-specific immunogen.
Dilution	WB: 1/500 - 1/2000. IHC-p: 1:100-1:300. ELISA: 1/10000.. IF 1:50-200
Concentration	1 mg/ml
Purity	≥90%
Storage Stability	-20°C/1 year
Synonyms	CLEC6A; CLECSF10; DECTIN2; C-type lectin domain family 6 member A; C-type lectin superfamily member 10; Dendritic cell-associated C-type lectin 2; DC-associated C-type lectin 2; Dectin-2
Observed Band	23kD
Cell Pathway	Cell membrane ; Single-pass type II membrane protein .
Tissue Specificity	Expressed in lung, spleen, lymph node, leukocytes, bone marrow, tonsils and dendritic cells. Strongly expressed in purified monocytes and weakly in B-cells. In peripheral blood cells, preferentially expressed in plasmacytoids rather than myeloids.
Function	function:May be involved in regulating immune reactivity.,similarity:Contains 1 C-type lectin domain.,tissue specificity:Expressed in dendritic cells.,
Background	The protein encoded by this gene is a type II membrane receptor with an extracellular C-type lectin-like domain fold. The extracellular portion binds structures with a high mannose content and has been shown to recognize several pathogens, including <i>C. elegans</i> , <i>S. cerevisiae</i> , <i>M. tuberculosis</i> , <i>C. neoformans</i> , and house dust mite. When stimulated, the encoded protein initiates signalling through the CARD9-Bcl10-Malt1 pathway, leading to the induction of cytokines. Two transcript variants encoding different isoforms have been found for this gene. [provided by RefSeq, Dec 2015],



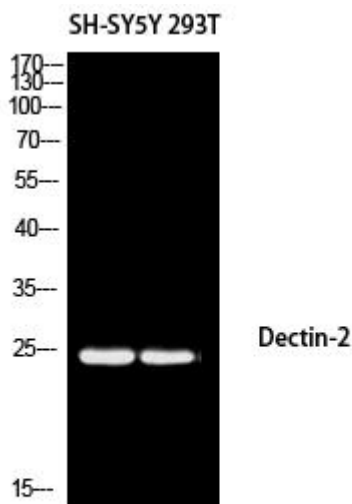
matters needing attention

Avoid repeated freezing and thawing!

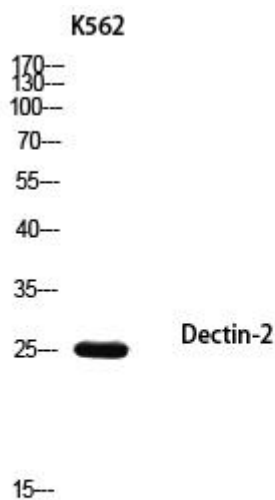
Usage suggestions

This product can be used in immunological reaction related experiments. For more information, please consult technical personnel.

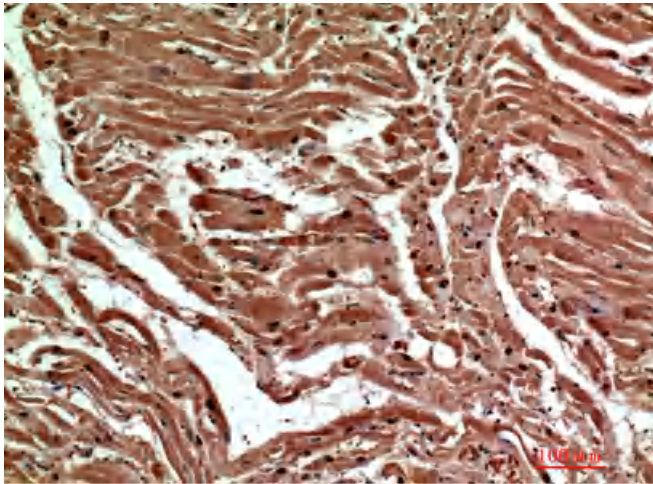
Products Images



Western blot analysis of SH-SY5Y 293T using Dectin-2 antibody. Antibody was diluted at 1:1000. Secondary antibody(catalog#:RS0002) was diluted at 1:20000



Western blot analysis of K562 using Dectin-2 antibody. Antibody was diluted at 1:1000. Secondary antibody(catalog#:RS0002) was diluted at 1:20000



Immunohistochemical analysis of paraffin-embedded human-heart, antibody was diluted at 1:200