

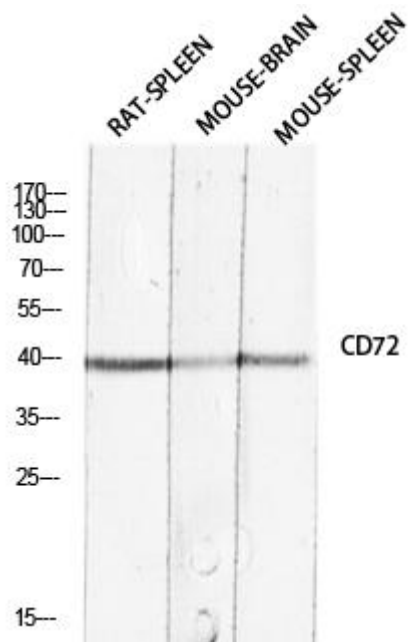


# CD72 Polyclonal Antibody

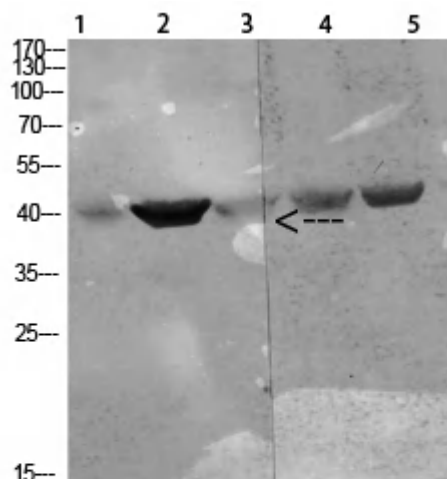
<b>Catalog No</b>	YP-Ab-14092
<b>Isotype</b>	IgG
<b>Reactivity</b>	Human;Rat;Mouse;
<b>Applications</b>	WB;IHC;IF;ELISA
<b>Gene Name</b>	CD72
<b>Protein Name</b>	B-cell differentiation antigen CD72
<b>Immunogen</b>	The antiserum was produced against synthesized peptide derived from the Internal region of human CD72. AA range:170-220
<b>Specificity</b>	CD72 Polyclonal Antibody detects endogenous levels of CD72 protein.
<b>Formulation</b>	Liquid in PBS containing 50% glycerol, 0.5% BSA and 0.02% sodium azide.
<b>Source</b>	Polyclonal, Rabbit,IgG
<b>Purification</b>	The antibody was affinity-purified from rabbit antiserum by affinity-chromatography using epitope-specific immunogen.
<b>Dilution</b>	IHC-p: 100-300.WB: 1/500 - 1/2000. ELISA: 1/10000.. IF 1:50-200
<b>Concentration</b>	1 mg/ml
<b>Purity</b>	≥90%
<b>Storage Stability</b>	-20°C/1 year
<b>Synonyms</b>	CD72; B-cell differentiation antigen CD72; Lyb-2; CD72
<b>Observed Band</b>	40kD
<b>Cell Pathway</b>	Membrane; Single-pass type II membrane protein.
<b>Tissue Specificity</b>	Pre-B-cells and B-cells but not terminally differentiated plasma cells.
<b>Function</b>	function:Plays a role in B-cell proliferation and differentiation. Associates with CD5.,online information:CD72,similarity:Contains 1 C-type lectin domain.,subunit:Homodimer; disulfide-linked.,tissue specificity:Pre-B-cells and B-cells but not terminally differentiated plasma cells.,
<b>Background</b>	function:Plays a role in B-cell proliferation and differentiation. Associates with CD5.,online information:CD72,similarity:Contains 1 C-type lectin domain.,subunit:Homodimer; disulfide-linked.,tissue specificity:Pre-B-cells and B-cells but not terminally differentiated plasma cells.,
<b>matters needing attention</b>	Avoid repeated freezing and thawing!
<b>Usage suggestions</b>	This product can be used in immunological reaction related experiments. For more information, please consult technical personnel.



## Products Images

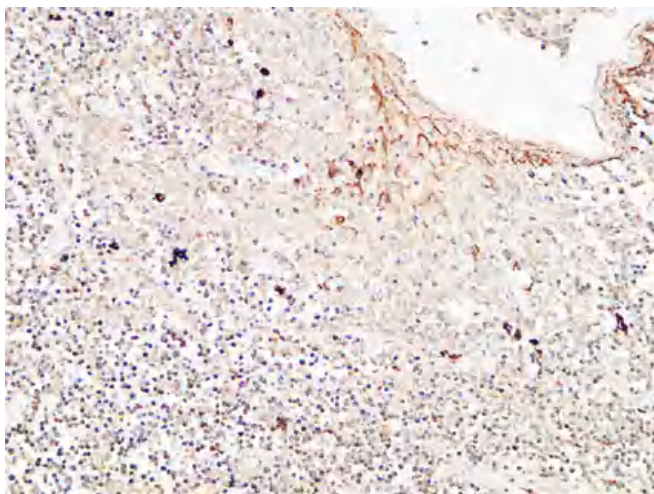


Western blot analysis of RAT-SPLEEN MOUSE-BRAIN MOUSE-SPLEEN lysis using CD72 antibody. Antibody was diluted at 1:2000. Secondary antibody(catalog#:RS0002) was diluted at 1:20000

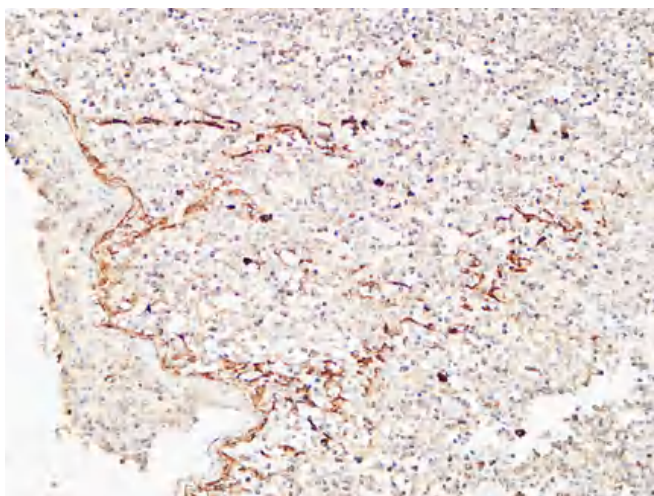


Western Blot analysis of various cells using Antibody diluted at 1:1000. Secondary antibody(catalog#:RS0002) was diluted at 1:20000

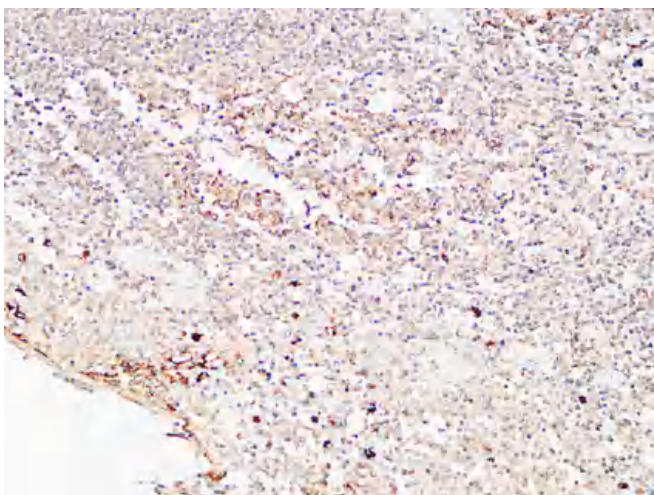
- 1 mouse-spleen
- 2 mouse-kidney
- 3 mouse-heart
- 4 293T
- 5 Hela



Immunohistochemical analysis of paraffin-embedded Human Amygdala. 1, Antibody was diluted at 1:100(4° overnight). 2, High-pressure and temperature EDTA, pH8.0 was used for antigen retrieval. 3,Secondary antibody was diluted at 1:200(room temperature, 30min).



Immunohistochemical analysis of paraffin-embedded Human Amygdala. 1, Antibody was diluted at 1:100(4° overnight). 2, High-pressure and temperature EDTA, pH8.0 was used for antigen retrieval. 3,Secondary antibody was diluted at 1:200(room temperature, 30min).



Immunohistochemical analysis of paraffin-embedded Human Amygdala. 1, Antibody was diluted at 1:100(4° overnight). 2, High-pressure and temperature EDTA, pH8.0 was used for antigen retrieval. 3,Secondary antibody was diluted at 1:200(room temperature, 30min).