



# Blk Monoclonal Antibody

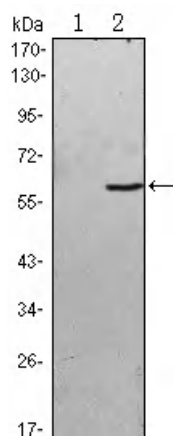
<b>Catalog No</b>	YP-Ab-14124
<b>Isotype</b>	IgG
<b>Reactivity</b>	Human
<b>Applications</b>	WB;IF;FCM;ELISA
<b>Gene Name</b>	BLK
<b>Protein Name</b>	Tyrosine-protein kinase Blk
<b>Immunogen</b>	Purified recombinant fragment of human Blk expressed in E. Coli.
<b>Specificity</b>	Blk Monoclonal Antibody detects endogenous levels of Blk protein.
<b>Formulation</b>	Ascitic fluid containing 0.03% sodium azide,0.5% BSA, 50%glycerol.
<b>Source</b>	Monoclonal, Mouse
<b>Purification</b>	Affinity purification
<b>Dilution</b>	Western Blot: 1/500 - 1/2000. Immunofluorescence: 1/200 - 1/1000. Flow cytometry: 1/200 - 1/400. ELISA: 1/10000. Not yet tested in other applications.
<b>Concentration</b>	1 mg/ml
<b>Purity</b>	≥90%
<b>Storage Stability</b>	-20°C/1 year
<b>Synonyms</b>	BLK; Tyrosine-protein kinase Blk; B lymphocyte kinase; p55-Blk
<b>Observed Band</b>	
<b>Cell Pathway</b>	Cell membrane ; Lipid-anchor . Present and active in lipid rafts. Membrane location is required for the phosphorylation of CD79A and CD79B (By similarity).
<b>Tissue Specificity</b>	Expressed in lymphatic organs, pancreatic islets, Leydig cells, striate ducts of salivary glands and hair follicles.
<b>Function</b>	catalytic activity:ATP + a [protein]-L-tyrosine = ADP + a [protein]-L-tyrosine phosphate.,function:May function in a signal transduction pathway that is restricted to B-lymphoid cells.,similarity:Belongs to the protein kinase superfamily. Tyr protein kinase family. SRC subfamily.,similarity:Contains 1 protein kinase domain.,similarity:Contains 1 SH2 domain.,similarity:Contains 1 SH3 domain.,
<b>Background</b>	This gene encodes a nonreceptor tyrosine-kinase of the src family of proto-oncogenes that are typically involved in cell proliferation and differentiation. The protein has a role in B-cell receptor signaling and B-cell development. The protein also stimulates insulin synthesis and secretion in response to glucose and enhances the expression of several pancreatic beta-cell transcription factors. [provided by RefSeq, Aug 2010],
<b>matters needing attention</b>	Avoid repeated freezing and thawing!



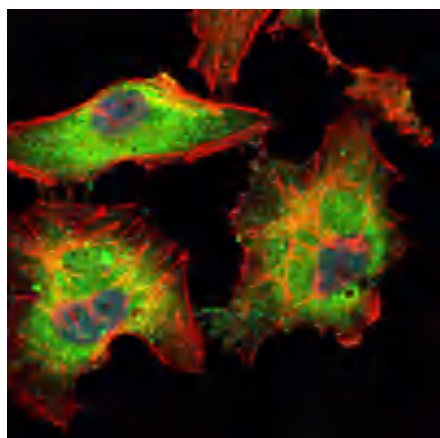
### Usage suggestions

This product can be used in immunological reaction related experiments. For more information, please consult technical personnel.

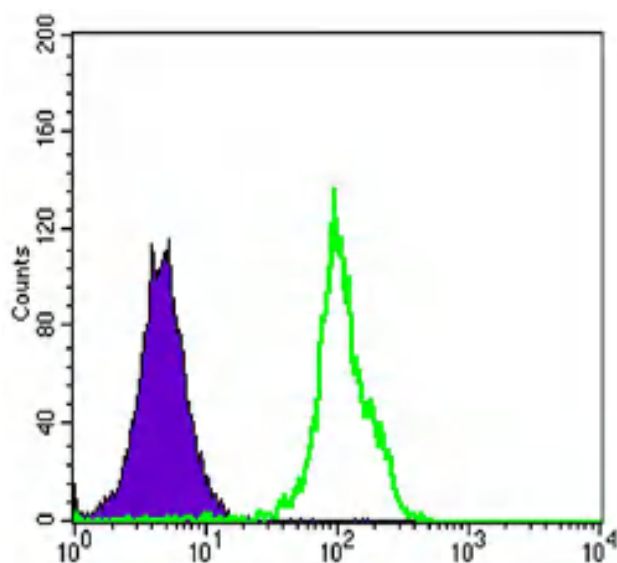
## Products Images



Western Blot analysis using Blk Monoclonal Antibody against HEK293 (1) and BLK-hlgGFc transfected HEK293 (2) cell lysate.



Immunofluorescence analysis of HeLa cells using Blk Monoclonal Antibody (green). Blue: DRAQ5 fluorescent DNA dye. Red: Actin filaments have been labeled with Alexa Fluor-555 phalloidin.



Flow cytometric analysis of HL-60 cells using Blk Monoclonal Antibody (green) and negative control (purple).