



Lsk Monoclonal Antibody

Catalog No	YP-Ab-14169
Isotype	IgG
Reactivity	Human
Applications	WB;FCM;ELISA
Gene Name	MATK
Protein Name	Megakaryocyte-associated tyrosine-protein kinase
Immunogen	Purified recombinant fragment of human Lsk expressed in E. Coli.
Specificity	Lsk Monoclonal Antibody detects endogenous levels of Lsk protein.
Formulation	Antibody are purified by protein G affinity chromatography. Liquid in PBS containing 50% glycerol and 0.03% sodium azide.
Source	Monoclonal, Mouse
Purification	Affinity purification
Dilution	Western Blot: 1/500 - 1/2000. Flow cytometry: 1/200 - 1/400. ELISA: 1/10000. Not yet tested in other applications.
Concentration	1 mg/ml
Purity	≥90%
Storage Stability	-20°C/1 year
Synonyms	MATK; CTK; HYL; Megakaryocyte-associated tyrosine-protein kinase; CSK homologous kinase; CHK; Hematopoietic consensus tyrosine-lacking kinase; Protein kinase HYL; Tyrosine-protein kinase CTK
Observed Band	
Cell Pathway	Cytoplasm . Membrane . In platelets, 90% of MATK localizes to the membrane fraction, and translocates to the cytoskeleton upon thrombin stimulation.
Tissue Specificity	Expressed in various myeloid cell lines, detected in brain and lung.
Function	catalytic activity:ATP + a [protein]-L-tyrosine = ADP + a [protein]-L-tyrosine phosphate.,function:Could play a significant role in the signal transduction of hematopoietic cells. May regulate tyrosine kinase activity of SRC-family members in brain by specifically phosphorylating their C-terminal regulatory tyrosine residue which acts as a negative regulatory site. It may play an inhibitory role in the control of T-cell proliferation.,PTM:Phosphorylated upon DNA damage, probably by ATM or ATR.,similarity:Belongs to the protein kinase superfamily. Tyr protein kinase family.,similarity:Belongs to the protein kinase superfamily. Tyr protein kinase family. CSK subfamily.,similarity:Contains 1 protein kinase domain.,similarity:Contains 1 SH2 domain.,similarity:Contains 1 SH3 domain.,tissue specificity:Expressed in various myeloid cell lines, detected in brain and lung.,



Background

The protein encoded by this gene has amino acid sequence similarity to Csk tyrosine kinase and has the structural features of the CSK subfamily: SRC homology SH2 and SH3 domains, a catalytic domain, a unique N terminus, lack of myristylation signals, lack of a negative regulatory phosphorylation site, and lack of an autophosphorylation site. This protein is thought to play a significant role in the signal transduction of hematopoietic cells. It is able to phosphorylate and inactivate Src family kinases, and may play an inhibitory role in the control of T-cell proliferation. This protein might be involved in signaling in some cases of breast cancer. Three alternatively spliced transcript variants that encode different isoforms have been described for this gene. [provided by RefSeq, Jul 2008],

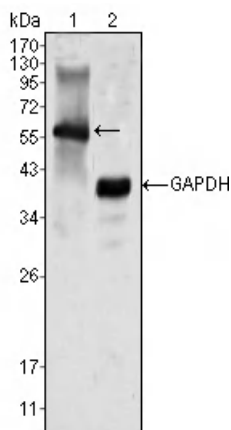
matters needing attention

Avoid repeated freezing and thawing!

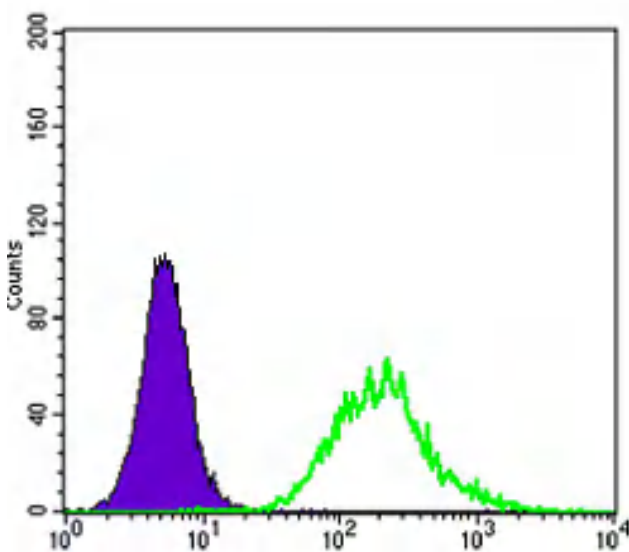
Usage suggestions

This product can be used in immunological reaction related experiments. For more information, please consult technical personnel.

Products Images



Western Blot analysis using Lsk Monoclonal Antibody against K562 cell lysate (1).



Flow cytometric analysis of K562 cells using Lsk Monoclonal Antibody (green) and negative control (purple).