



PRAK Monoclonal Antibody

Catalog No	YP-Ab-14184
Isotype	IgG
Reactivity	Human
Applications	WB;IHC;IF;ELISA
Gene Name	MAPKAPK5
Protein Name	MAP kinase-activated protein kinase 5
Immunogen	Purified recombinant fragment of PRAK expressed in E. Coli.
Specificity	PRAK Monoclonal Antibody detects endogenous levels of PRAK protein.
Formulation	Ascitic fluid containing 0.03% sodium azide,0.5% BSA, 50%glycerol.
Source	Monoclonal, Mouse
Purification	Affinity purification
Dilution	WB: 1/500 - 1/2000. IHC: 1/200 - 1/1000. ELISA: 1/10000.. IF 1:50-200
Concentration	1 mg/ml
Purity	≥90%
Storage Stability	-20°C/1 year
Synonyms	MAPKAPK5; PRAK; MAP kinase-activated protein kinase 5; MAPK-activated protein kinase 5; MAPKAP kinase 5; MAPKAP-K5; MAPKAPK-5; MK-5; MK5; p38-regulated/activated protein kinase; PRAK
Observed Band	
Cell Pathway	Cytoplasm. Nucleus. Translocates to the cytoplasm following phosphorylation and activation. Interaction with ERK3/MAPK6 or ERK4/MAPK4 and phosphorylation at Thr-182, activates the protein kinase activity, followed by translocation to the cytoplasm. Phosphorylation by PKA/PRKACA at Ser-115 also induces nuclear export.
Tissue Specificity	Expressed ubiquitously.
Function	catalytic activity:ATP + a protein = ADP + a phosphoprotein..enzyme regulation:p38 alpha and beta-dependent phosphorylation increases its activity. Activated by stress-related extracellular stimuli; such as H ₂ O ₂ , arsenite, anisomycin TNF alpha and also PMA and the calcium ionophore A23187; but to a lesser extent. In vitro, activated by SQSTM1..function:Mediates stress-induced small heat shock protein 27 phosphorylation..PTM:Phosphorylated on Thr-182; which is the regulatory phosphorylation site and is located on the T-loop/loop 12..similarity:Belongs to the protein kinase superfamily. CAMK Ser/Thr protein kinase family..similarity:Contains 1 protein kinase domain..subcellular location:Also observed in the nucleus..subunit:Interacts with SQSTM1..tissue specificity:Expressed ubiquitously..



Background

The protein encoded by this gene is a tumor suppressor and member of the serine/threonine kinase family. In response to cellular stress and proinflammatory cytokines, this kinase is activated through its phosphorylation by MAP kinases including MAPK1/ERK, MAPK14/p38-alpha, and MAPK11/p38-beta. The encoded protein is found in the nucleus but translocates to the cytoplasm upon phosphorylation and activation. This kinase phosphorylates heat shock protein HSP27 at its physiologically relevant sites. Two alternately spliced transcript variants of this gene encoding distinct isoforms have been reported. [provided by RefSeq, Nov 2012],

matters needing attention

Avoid repeated freezing and thawing!

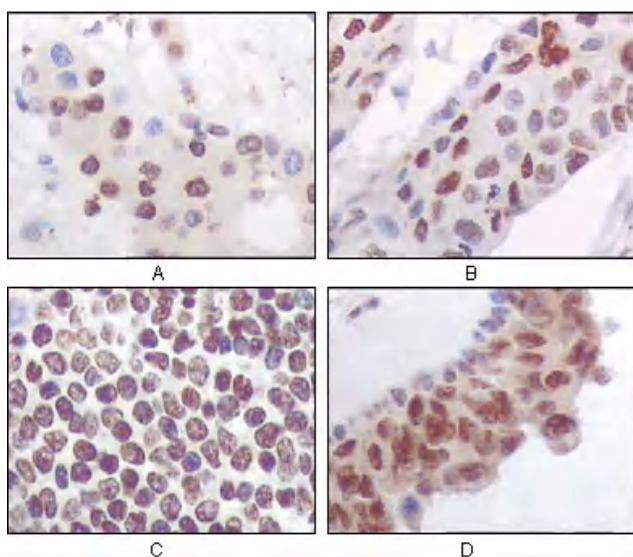
Usage suggestions

This product can be used in immunological reaction related experiments. For more information, please consult technical personnel.

Products Images



Western Blot analysis using PRAK Monoclonal Antibody against truncated PRAK recombinant protein.



Immunohistochemistry analysis of paraffin-embedded human liver carcinoma (A), esophagus carcinoma (B), normal spleen tissue (C), breast carcinoma (D), showing nuclear and cytoplasmic localization with DAB staining using PRAK Monoclonal Antibody.