



PP2B-A α Monoclonal Antibody

Catalog No	YP-Ab-14203
Isotype	IgG
Reactivity	Human;Mouse;Rat
Applications	WB
Gene Name	PPP3CA
Protein Name	Serine/threonine-protein phosphatase 2B catalytic subunit alpha isoform
Immunogen	Purified recombinant human PP2B-A α protein fragments expressed in E.coli.
Specificity	PP2B-A α Monoclonal Antibody detects endogenous levels of PP2B-A α protein.
Formulation	Purified mouse monoclonal in buffer containing 0.1M Tris-Glycine (pH 7.4, 150 mM NaCl) with 0.2% sodium azide, 50% glycerol.
Source	Monoclonal, Mouse
Purification	Affinity purification
Dilution	Western Blot: 1/1000 - 1/2000. Not yet tested in other applications.
Concentration	1 mg/ml
Purity	$\geq 90\%$
Storage Stability	-20°C/1 year
Synonyms	PPP3CA; CALNA; CNA; Serine/threonine-protein phosphatase 2B catalytic subunit alpha isoform; CAM-PRP catalytic subunit; Calmodulin-dependent calcineurin A subunit alpha isoform
Observed Band	
Cell Pathway	Cytoplasm . Cell membrane ; Peripheral membrane protein . Cell membrane, sarcolemma . Cytoplasm, myofibril, sarcomere, Z line . Cell projection, dendritic spine . Colocalizes with ACTN1 and MYOZ2 at the Z line in heart and skeletal muscle (By similarity). Recruited to the cell membrane by scaffold protein AKAP5 following L-type Ca(2+)-channel activation (PubMed:22343722). .
Tissue Specificity	Expressed in keratinocytes (at protein level) (PubMed:29043977). Expressed in lymphoblasts (at protein level) (PubMed:30254215).
Function	catalytic activity:A phosphoprotein + H(2)O = a protein + phosphate.,cofactor:binds 1 Fe(3+) ion per subunit.,cofactor:binds 1 zinc ion per subunit.,function:Calcium-dependent, calmodulin-stimulated protein phosphatase. This subunit may have a role in the calmodulin activation of calcineurin. Dephosphorylates HSPB1 and SSH1.,online information:Calcineurin entry,similarity:Belongs to the PPP phosphatase family.,similarity:Belongs to the PPP phosphatase family. PP-2B subfamily.,subcellular location:Colocalizes with ACTN1 and MYOZ2 at the Z line in heart and skeletal muscle.,subunit:Composed of two components (A and B), the A component is the catalytic subunit and the B component confers calcium sensitivity. Interacts with TORC2/CRTC2, MYOZ1,



MYOZ2 and MYOZ3.,

Background

catalytic activity:A phosphoprotein + H(2)O = a protein + phosphate.,cofactor:Binds 1 Fe(3+) ion per subunit.,cofactor:Binds 1 zinc ion per subunit.,function:Calcium-dependent, calmodulin-stimulated protein phosphatase. This subunit may have a role in the calmodulin activation of calcineurin. Dephosphorylates HSPB1 and SSH1.,online information:Calcineurin entry,similarity:Belongs to the PPP phosphatase family.,similarity:Belongs to the PPP phosphatase family. PP-2B subfamily.,subcellular location:Colocalizes with ACTN1 and MYOZ2 at the Z line in heart and skeletal muscle.,subunit:Composed of two components (A and B), the A component is the catalytic subunit and the B component confers calcium sensitivity. Interacts with TORC2/CRTC2, MYOZ1, MYOZ2 and MYOZ3.,

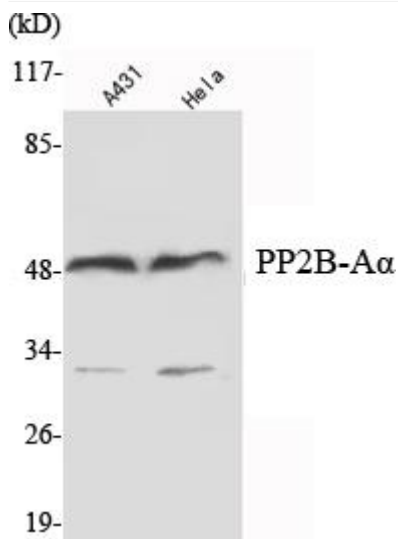
matters needing attention

Avoid repeated freezing and thawing!

Usage suggestions

This product can be used in immunological reaction related experiments. For more information, please consult technical personnel.

Products Images



Western Blot analysis using PP2B-A α Monoclonal Antibody against A431, HeLa cell lysate .