



Placental alkaline phosphatase (PLAP) mouse mAb

Catalog No	YP-Ab-14230
Isotype	IgG
Reactivity	Human
Applications	WB
Gene Name	alpp
Protein Name	
Immunogen	Purified recombinant Placental alkaline phosphatase (PLAP) protein fragments expressed in E.coli.
Specificity	This antibody detects endogenous levels of Placental alkaline phosphatase (PLAP) and does not cross-react with related proteins.
Formulation	Liquid in PBS containing 50% glycerol, 0.5% BSA and 0.02% sodium azide.
Source	Monoclonal, Mouse
Purification	The antibody was affinity-purified from mouse ascites by affinity-chromatography using epitope-specific immunogen.
Dilution	wb 1:1000
Concentration	1 mg/ml
Purity	≥90%
Storage Stability	-20°C/1 year
Synonyms	Alkaline phosphatase; Alkaline phosphatase placental; Alkaline phosphatase placental type; Alkaline phosphatase Regan isozyme; ALP; Alp1; ALPP; FLJ61142; Germ-cell alkaline phosphatase; nagao isozyme; OTTHUMP00000164354; PALP; Placental alkaline phosphatase 1; placental heat-stable alkaline phosphatase; placental type; PLAP; PLAP-1; PLAP1; PPB1_HUMAN.
Observed Band	70kD
Cell Pathway	Cell membrane; Lipid-anchor, GPI-anchor .
Tissue Specificity	Detected in placenta (at protein level).
Function	catalytic activity:A phosphate monoester + H(2)O = an alcohol + phosphate.,cofactor:Binds 1 magnesium ion.,cofactor:Binds 2 zinc ions.,miscellaneous:In most mammals there are four different isozymes: placental, placental-like, intestinal and tissue non-specific (liver/bone/kidney).,online information:Alkaline phosphatase entry,polymorphism:Placental ALP is highly polymorphic, there are at least three common alleles.,similarity:Belongs to the alkaline phosphatase family.,subunit:Homodimer.,



Background

The protein encoded by this gene is an alkaline phosphatase, a metalloenzyme that catalyzes the hydrolysis of phosphoric acid monoesters. It belongs to a multigene family composed of four alkaline phosphatase isoenzymes. The enzyme functions as a homodimer and has a catalytic site containing one magnesium and two zinc ions, which are required for its enzymatic function. The protein is primarily expressed in placental and endometrial tissue; however, strong ectopic expression has been detected in ovarian adenocarcinoma, serous cystadenocarcinoma, and other ovarian cancer cells. [provided by RefSeq, Jan 2015],

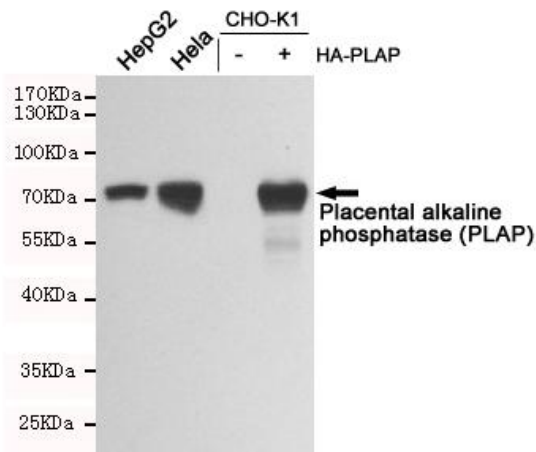
matters needing attention

Avoid repeated freezing and thawing!

Usage suggestions

This product can be used in immunological reaction related experiments. For more information, please consult technical personnel.

Products Images



Western blot analysis of extracts from HepG2, HeLa, CHO-K1 and CHO-K1 transfected pcDNA3.1-HA-PLAP cell lysates using Placental alkaline phosphatase (PLAP) mouse mAb (1:1000 diluted). Predicted band size:70KDa. Observed band size:70KDa.