



JNK2 Rabbit Polyclonal Antibody

Catalog No	YP-Ab-14279
Isotype	IgG
Reactivity	Human;Mouse;Rat
Applications	WB;IHC;IF
Gene Name	MAPK9 JNK2 PRKM9 SAPK1A
Protein Name	Mitogen-activated protein kinase 9 (MAP kinase 9) (MAPK 9) (EC 2.7.11.24) (JNK-55) (Stress-activated protein kinase 1a) (SAPK1a) (Stress-activated protein kinase JNK2) (c-Jun N-terminal kinase 2)
Immunogen	Recombinant Protein of JNK2
Specificity	The antibody detects endogenous JNK2 protein
Formulation	Liquid in PBS containing 50% glycerol, 0.5% BSA and 0.02% sodium azide.
Source	Polyclonal, Rabbit,IgG
Purification	The antibody was affinity-purified from rabbit antiserum by affinity-chromatography using epitope-specific immunogen.
Dilution	WB 1:500-2000,IHC-p 1:50-300. IF 1:50-200
Concentration	1 mg/ml
Purity	≥90%
Storage Stability	-20°C/1 year
Synonyms	Mitogen-activated protein kinase 9 (MAP kinase 9;MAPK 9;EC 2.7.11.24;JNK-55;Stress-activated protein kinase 1a;SAPK1a;Stress-activated protein kinase JNK2;c-Jun N-terminal kinase 2)
Observed Band	46,54kD
Cell Pathway	Cytoplasm . Nucleus . Colocalizes with POU5F1 in the nucleus. .
Tissue Specificity	Brain,Skin,
Function	catalytic activity:ATP + a protein = ADP + a phosphoprotein.,cofactor:Magnesium.,domain:The TXY motif contains the threonine and tyrosine residues whose phosphorylation activates the MAP kinases.,enzyme regulation:Activated by threonine and tyrosine phosphorylation by either of two dual specificity kinases, MAP2K4 and MAP2K7. Inhibited by dual specificity phosphatases, such as DUSP1.,function:JNK2 isoforms display different binding patterns: alpha-1 and alpha-2 preferentially bind to c-Jun, whereas beta-1 and beta-2 bind to ATF2. However, there is no correlation between binding and phosphorylation, which is achieved at about the same efficiency by all isoforms. JUNB is not a substrate for JNK2 alpha-2, and JUND binds only weakly to it.,function:Responds to activation by environmental stress and pro-inflammatory cytokines by phosphorylating a number of transcription



factors, primarily com

Background

The protein encoded by this gene is a member of the MAP kinase family. MAP kinases act as an integration point for multiple biochemical signals, and are involved in a wide variety of cellular processes such as proliferation, differentiation, transcription regulation and development. This kinase targets specific transcription factors, and thus mediates immediate-early gene expression in response to various cell stimuli. It is most closely related to MAPK8, both of which are involved in UV radiation induced apoptosis, thought to be related to the cytochrome c-mediated cell death pathway. This gene and MAPK8 are also known as c-Jun N-terminal kinases. This kinase blocks the ubiquitination of tumor suppressor p53, and thus it increases the stability of p53 in nonstressed cells. Studies of this gene's mouse counterpart suggest a key role in T-cell differentiation. Several alternative

matters needing attention

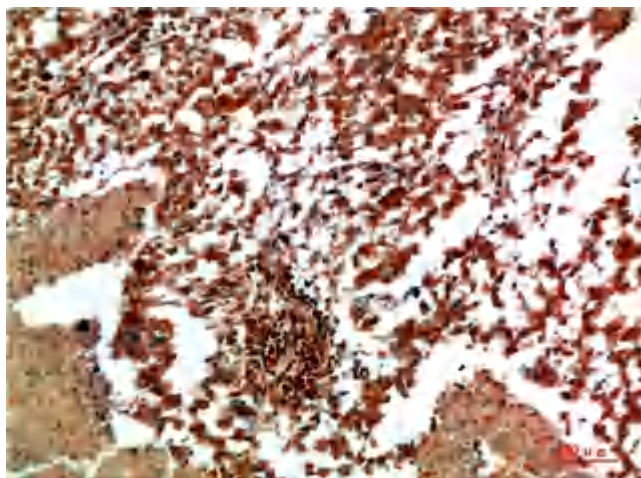
Avoid repeated freezing and thawing!

Usage suggestions

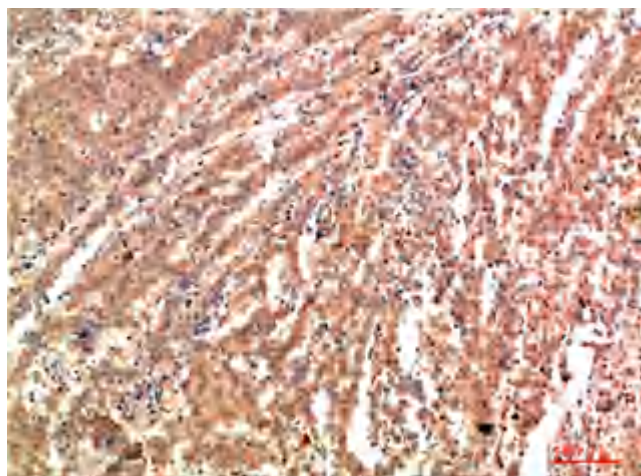
This product can be used in immunological reaction related experiments. For more information, please consult technical personnel.



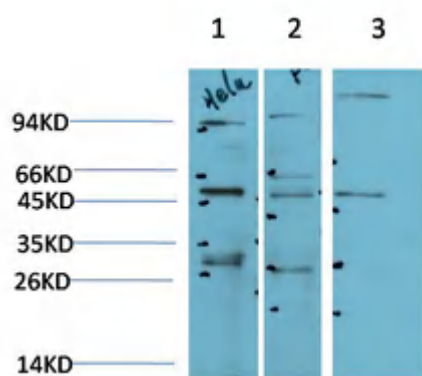
Products Images



Immunohistochemical analysis of paraffin-embedded Human Lung Carcinoma Tissue using JNK2 Rabbit pAb diluted at 1:200



Immunohistochemical analysis of paraffin-embedded Human Lung Carcinoma Tissue using JNK2 Rabbit pAb diluted at 1:200



Western blot analysis of 1) Hela Cell Lysate, 2) PC12 Cell Lysate, 3) C2C12 Cell Lysate using JNK2 Rabbit pAb diluted at 1:1000.