



JAK2 Rabbit Polyclonal Antibody

| | |
|---------------------------|--|
| Catalog No | YP-Ab-14280 |
| Isotype | IgG |
| Reactivity | Human;Mouse;Rat |
| Applications | IHC;IF |
| Gene Name | JAK2 |
| Protein Name | Tyrosine-protein kinase JAK2 (EC 2.7.10.2) (Janus kinase 2) (JAK-2) |
| Immunogen | Recombinant Protein of JAK2 |
| Specificity | The antibody detects endogenous JAK2 protein |
| Formulation | Liquid in PBS containing 50% glycerol, 0.5% BSA and 0.02% sodium azide. |
| Source | Polyclonal, Rabbit,IgG |
| Purification | The antibody was affinity-purified from rabbit antiserum by affinity-chromatography using epitope-specific immunogen. |
| Dilution | IHC-p 1:50-300. IF 1:50-200 |
| Concentration | 1 mg/ml |
| Purity | ≥90% |
| Storage Stability | -20°C/1 year |
| Synonyms | Tyrosine-protein kinase JAK2 (EC 2.7.10.2;Janus kinase 2;JAK-2) |
| Observed Band | 120kD |
| Cell Pathway | Endomembrane system ; Peripheral membrane protein . Cytoplasm . Nucleus . |
| Tissue Specificity | Ubiquitously expressed throughout most tissues. |
| Function | catalytic activity:ATP + a [protein]-L-tyrosine = ADP + a [protein]-L-tyrosine phosphate.,disease:Chromosomal aberrations involving JAK2 are found in both chronic and acute forms of eosinophilic, lymphoblastic and myeloid leukemia. Translocation t(8;9)(p22;p24) with PCM1 links the protein kinase domain of JAK2 to the major portion of PCM1. Translocation t(9;12)(p24;p13) with ETV6.,disease:Defects in JAK2 are a cause of acute myelogenous leukemia (AML) [MIM:601626]. AML is a malignant disease in which hematopoietic precursors are arrested in an early stage of development.,disease:Defects in JAK2 are a cause of susceptibility to Budd-Chiari syndrome [MIM:600880]. Budd-Chiari syndrome is a spectrum of disease states, including anatomic abnormalities and hypercoagulable disorders, resulting in hepatic venous outflow occlusion. Clinical manifestations observed in the majority of patients incl |
| Background | This gene product is a protein tyrosine kinase involved in a specific subset of cytokine receptor signaling pathways. It has been found to be constitutively associated with the prolactin receptor and is required for responses to gamma |



interferon. Mice that do not express an active protein for this gene exhibit embryonic lethality associated with the absence of definitive erythropoiesis. [provided by RefSeq, Jul 2008],

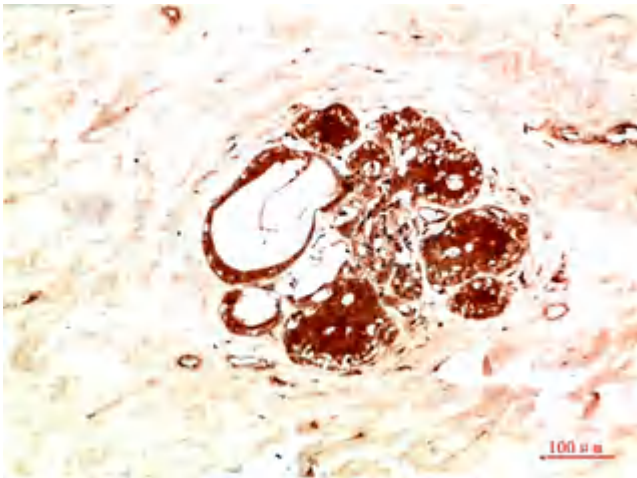
matters needing attention

Avoid repeated freezing and thawing!

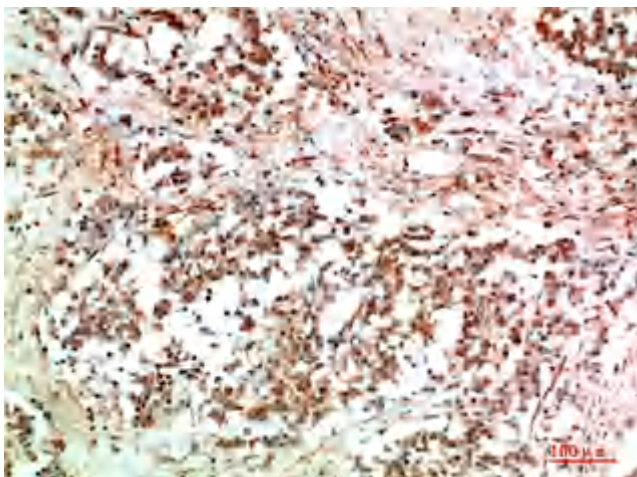
Usage suggestions

This product can be used in immunological reaction related experiments. For more information, please consult technical personnel.

Products Images



Immunohistochemical analysis of paraffin-embedded Human Breast Carcinoma Tissue using JAK2 Rabbit pAb diluted at 1:200



Immunohistochemical analysis of paraffin-embedded Human Lung Carcinoma Tissue using JAK2 Rabbit pAb diluted at 1:200