



# WNK1 (phospho Thr60) Polyclonal Antibody

<b>Catalog No</b>	YP-Ab-14438
<b>Isotype</b>	IgG
<b>Reactivity</b>	Human;Mouse;Rat
<b>Applications</b>	WB;IHC;IF;ELISA
<b>Gene Name</b>	WNK1
<b>Protein Name</b>	Serine/threonine-protein kinase WNK1
<b>Immunogen</b>	The antiserum was produced against synthesized peptide derived from human WNK1 around the phosphorylation site of Thr58. AA range:24-73
<b>Specificity</b>	Phospho-WNK1 (T60) Polyclonal Antibody detects endogenous levels of WNK1 protein only when phosphorylated at T60.
<b>Formulation</b>	Liquid in PBS containing 50% glycerol, 0.5% BSA and 0.02% sodium azide.
<b>Source</b>	Polyclonal, Rabbit,IgG
<b>Purification</b>	The antibody was affinity-purified from rabbit antiserum by affinity-chromatography using epitope-specific immunogen.
<b>Dilution</b>	WB: 1/500 - 1/2000. IHC: 1/100 - 1/300. ELISA: 1/5000.. IF 1:50-200
<b>Concentration</b>	1 mg/ml
<b>Purity</b>	≥90%
<b>Storage Stability</b>	-20°C/1 year
<b>Synonyms</b>	WNK1; HSN2; KDP; KIAA0344; PRKWNK1; Serine/threonine-protein kinase WNK1; Erythrocyte 65 kDa protein; p65; Kinase deficient protein; Protein kinase lysine-deficient 1; Protein kinase with no lysine 1; hWNK1
<b>Observed Band</b>	230kD
<b>Cell Pathway</b>	Cytoplasm .
<b>Tissue Specificity</b>	Widely expressed, with highest levels observed in the testis, heart, kidney and skeletal muscle. Isoform 3 is kidney-specific and specifically expressed in the distal convoluted tubule (DCT) and connecting tubule (CNT) of the nephron.
<b>Function</b>	catalytic activity:ATP + a protein = ADP + a phosphoprotein..caution:Cys-250 is present instead of the conserved Lys which is expected to be an active site residue. Lys-233 appears to fulfill the required catalytic function..caution:PubMed:2507249 describes a peptide sequence containing a GlcNAc glycosylated Ser in position 164 while it is an Arg residue according to others..cofactor:Magnesium..disease:Defects in WNK1 are a cause of pseudohypoaldosteronism type II (PHAII) [MIM:145260]. PHAII is an autosomal dominant disease characterized by severe hypertension, hyperkalemia, and sensitivity to thiazide diuretics which may result from a chloride shunt in the renal distal nephron..enzyme regulation:By hypertonicity. Activation requires autophosphorylation of Ser-382. Phosphorylation of Ser-378 also promotes



increased activity.,function:Controls sodium and chloride ion transport by inhibiti

**Background**

This gene encodes a member of the WNK subfamily of serine/threonine protein kinases. The encoded protein may be a key regulator of blood pressure by controlling the transport of sodium and chloride ions. Mutations in this gene have been associated with pseudohypoaldosteronism type II and hereditary sensory neuropathy type II. Alternatively spliced transcript variants encoding different isoforms have been described but the full-length nature of all of them has yet to be determined.[provided by RefSeq, May 2010],

**matters needing attention**

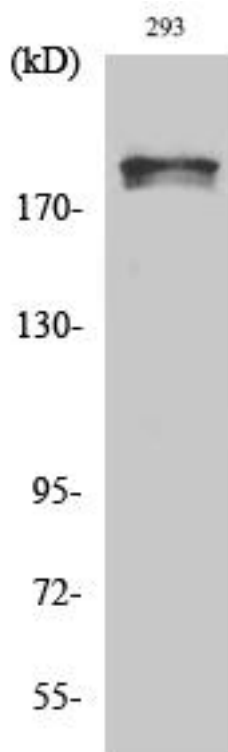
Avoid repeated freezing and thawing!

**Usage suggestions**

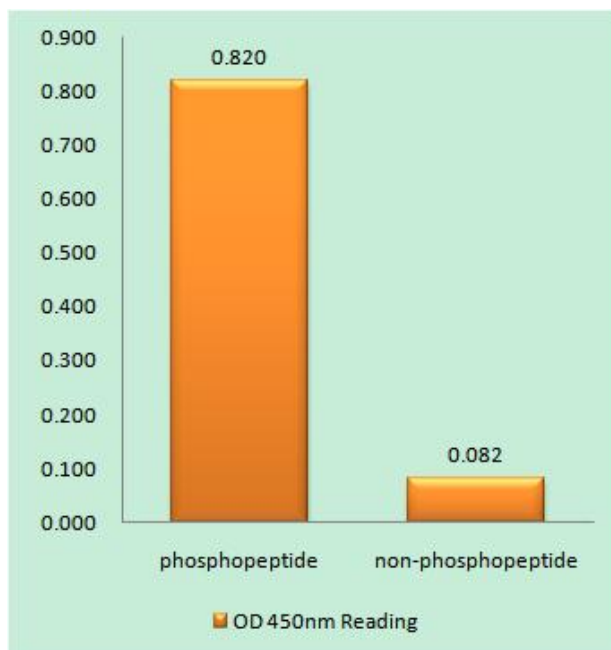
This product can be used in immunological reaction related experiments. For more information, please consult technical personnel.



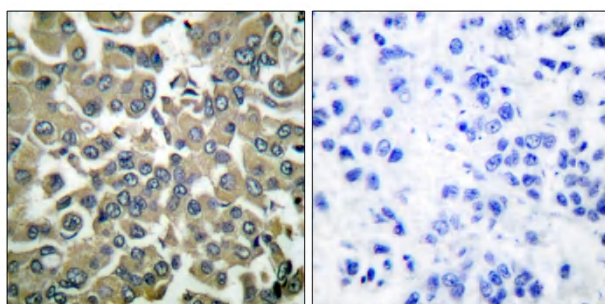
## Products Images



Western Blot analysis of various cells using Phospho-WNK1 (T60) Polyclonal Antibody



Enzyme-Linked Immunosorbent Assay (Phospho-ELISA) for Immunogen Phosphopeptide (Phospho-left) and Non-Phosphopeptide (Phospho-right), using WNK1 (Phospho-Thr58) Antibody



Immunohistochemistry analysis of paraffin-embedded human breast carcinoma, using WNK1 (Phospho-Thr58) Antibody. The picture on the right is blocked with the phosphopeptide.



Wnk1 --  
(pThr58)



-- 170  
-- 130  
-- 95  
-- 72  
-- 55  
(kD)

Western blot analysis of lysates from 293 cells treated with EGF 200ng/ml 30', using Wnk1 (Phospho-Thr58) Antibody. The lane on the right is blocked with the phospho peptide.