



# Thymidine Kinase (phospho Ser13) Polyclonal Antibody

<b>Catalog No</b>	YP-Ab-14455
<b>Isotype</b>	IgG
<b>Reactivity</b>	Human;Mouse;Rat;Pig(Test by out customer)
<b>Applications</b>	WB;IHC;IF;ELISA
<b>Gene Name</b>	TK1
<b>Protein Name</b>	Thymidine kinase cytosolic
<b>Immunogen</b>	The antiserum was produced against synthesized peptide derived from human TK around the phosphorylation site of Ser13. AA range:1-50
<b>Specificity</b>	Phospho-Thymidine Kinase (S13) Polyclonal Antibody detects endogenous levels of Thymidine Kinase protein only when phosphorylated at S13.
<b>Formulation</b>	Liquid in PBS containing 50% glycerol, 0.5% BSA and 0.02% sodium azide.
<b>Source</b>	Polyclonal, Rabbit,IgG
<b>Purification</b>	The antibody was affinity-purified from rabbit antiserum by affinity-chromatography using epitope-specific immunogen.
<b>Dilution</b>	WB: 1/500 - 1/2000. IHC: 1/100 - 1/300. ELISA: 1/5000.. IF 1:50-200
<b>Concentration</b>	1 mg/ml
<b>Purity</b>	≥90%
<b>Storage Stability</b>	-20°C/1 year
<b>Synonyms</b>	TK1; Thymidine kinase; cytosolic
<b>Observed Band</b>	25kD
<b>Cell Pathway</b>	Cytoplasm.
<b>Tissue Specificity</b>	Epithelium,Lymph,Skin,Uterus,
<b>Function</b>	catalytic activity:ATP + thymidine = ADP + thymidine 5'-phosphate.,miscellaneous:Two forms have been identified in animal cells, one in cytosol and one in mitochondria. Activity of the cytosolic enzyme is high in proliferating cells and peaks during the S-phase of the cell cycle; it is very low in resting cells.,PTM:Phosphorylated on Ser-13 in mitosis.,similarity:Belongs to the thymidine kinase family.,
<b>Background</b>	catalytic activity:ATP + thymidine = ADP + thymidine 5'-phosphate.,miscellaneous:Two forms have been identified in animal cells, one in cytosol and one in mitochondria. Activity of the cytosolic enzyme is high in proliferating cells and peaks during the S-phase of the cell cycle; it is very low in resting cells.,PTM:Phosphorylated on Ser-13 in mitosis.,similarity:Belongs to the thymidine kinase family.,



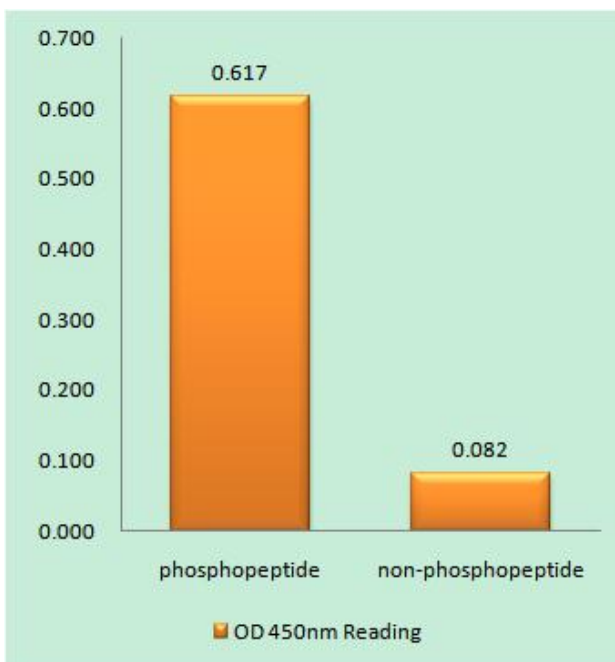
**matters needing attention**

Avoid repeated freezing and thawing!

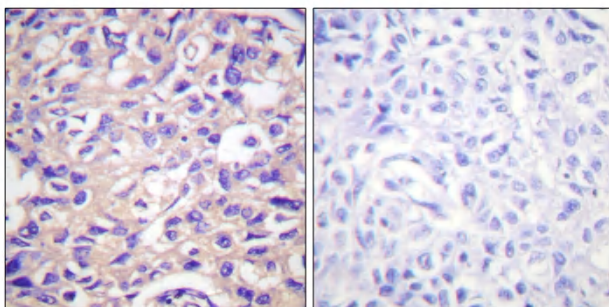
**Usage suggestions**

This product can be used in immunological reaction related experiments. For more information, please consult technical personnel.

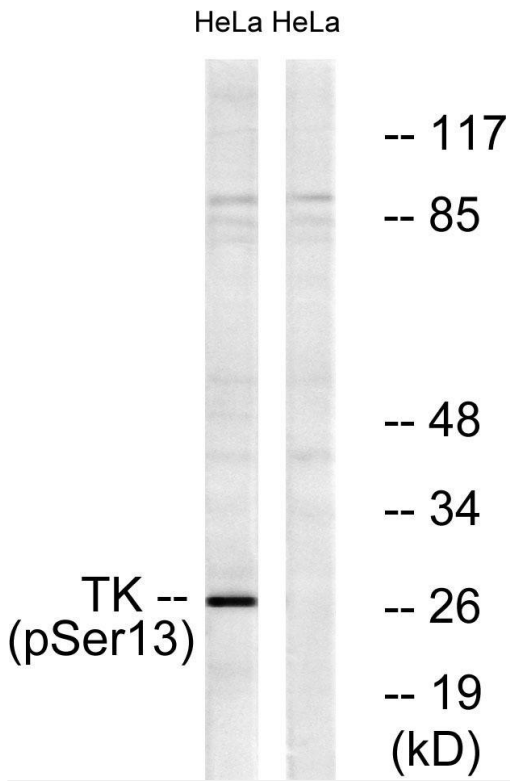
## Products Images



Enzyme-Linked Immunosorbent Assay (Phospho-ELISA) for Immunogen Phosphopeptide (Phospho-left) and Non-Phosphopeptide (Phospho-right), using TK (Phospho-Ser13) Antibody



Immunohistochemistry analysis of paraffin-embedded human breast carcinoma, using TK (Phospho-Ser13) Antibody. The picture on the right is blocked with the phospho peptide.



Western blot analysis of lysates from HeLa cells treated with paclitaxel 1uM 24h, using TK (Phospho-Ser13) Antibody. The lane on the right is blocked with the phospho peptide.