



Fer (phospho Tyr402) Polyclonal Antibody

Catalog No	YP-Ab-14490
Isotype	IgG
Reactivity	Human;Mouse
Applications	WB;IHC;IF;ELISA
Gene Name	FER
Protein Name	Tyrosine-protein kinase Fer
Immunogen	The antiserum was produced against synthesized peptide derived from human FER around the phosphorylation site of Tyr402. AA range:371-420
Specificity	Phospho-Fer (Y402) Polyclonal Antibody detects endogenous levels of Fer protein only when phosphorylated at Y402.
Formulation	Liquid in PBS containing 50% glycerol, 0.5% BSA and 0.02% sodium azide.
Source	Polyclonal, Rabbit,IgG
Purification	The antibody was affinity-purified from rabbit antiserum by affinity-chromatography using epitope-specific immunogen.
Dilution	WB: 1/500 - 1/2000. IHC: 1/100 - 1/300. ELISA: 1/20000.. IF 1:50-200
Concentration	1 mg/ml
Purity	≥90%
Storage Stability	-20°C/1 year
Synonyms	FER; TYK3; Tyrosine-protein kinase Fer; Feline encephalitis virus-related kinase FER; Fujinami poultry sarcoma/Feline sarcoma-related protein Fer; Proto-oncogene c-Fer; Tyrosine kinase 3; p94-Fer
Observed Band	85kD
Cell Pathway	Cytoplasm. Cytoplasm, cytoskeleton. Cell membrane; Peripheral membrane protein; Cytoplasmic side. Cell projection. Cell junction. Membrane; Peripheral membrane protein; Cytoplasmic side. Nucleus. Cytoplasm, cell cortex. Associated with the chromatin. Detected on microtubules in polarized and motile vascular endothelial cells. Colocalizes with F-actin at the cell cortex. Colocalizes with PECAM1 and CTNND1 at nascent cell-cell contacts.
Tissue Specificity	Isoform 1 is detected in normal colon and in fibroblasts (at protein level). Isoform 3 is detected in normal testis, in colon carcinoma-derived metastases in lung, liver and ovary, and in colon carcinoma and hepato carcinoma cell lines (at protein level). Isoform 3 is not detected in normal colon or in normal fibroblasts (at protein level). Widely expressed.
Function	catalytic activity:ATP + a [protein]-L-tyrosine = ADP + a [protein]-L-tyrosine phosphate.,function:Tyrosine kinase of the non-receptor type. Probably performs an important function, perhaps in regulatory processes such as cell cycle control.,similarity:Belongs to the protein kinase superfamily. Tyr protein kinase family. Fes/fps subfamily.,similarity:Contains 1 FCH domain.,similarity:Contains 1



protein kinase domain.,similarity:Contains 1 SH2 domain.,subcellular location:Associated with the chromatin.,tissue specificity:Expressed in a variety of lymphoid cell lines.,

Background

The protein encoded by this gene is a member of the FPS/FES family of non-transmembrane receptor tyrosine kinases. It regulates cell-cell adhesion and mediates signaling from the cell surface to the cytoskeleton via growth factor receptors. Alternative splicing results in multiple transcript variants. A related pseudogene has been identified on chromosome X. [provided by RefSeq, Apr 2015],

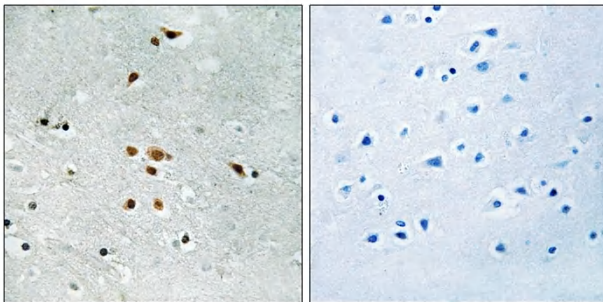
matters needing attention

Avoid repeated freezing and thawing!

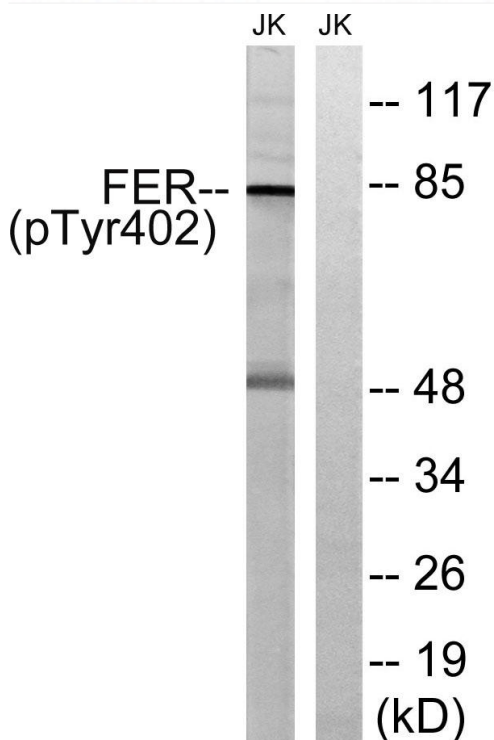
Usage suggestions

This product can be used in immunological reaction related experiments. For more information, please consult technical personnel.

Products Images



Immunohistochemistry analysis of paraffin-embedded human brain, using FER (Phospho-Tyr402) Antibody. The picture on the right is blocked with the phospho peptide.



Western blot analysis of lysates from Jurkat cells treated with starved 24h, using FER (Phospho-Tyr402) Antibody. The lane on the right is blocked with the phospho peptide.