



Casein Kinase I γ 1/2/3 (phospho Tyr263) Polyclonal Antibody

Catalog No	YP-Ab-14543
Isotype	IgG
Reactivity	Human;Mouse;Rat
Applications	IHC;IF;ELISA
Gene Name	CSNK1G1/CSNK1G2/CSNK1G3
Protein Name	Casein kinase I isoform gamma-1/2/3
Immunogen	The antiserum was produced against synthesized peptide derived from human CK-1 gamma1/2/3 around the phosphorylation site of Tyr263. AA range:229-278
Specificity	Phospho-Casein Kinase I γ 1/2/3 (Y263) Polyclonal Antibody detects endogenous levels of Casein Kinase I γ 1/2/3 protein only when phosphorylated at Y263.
Formulation	Liquid in PBS containing 50% glycerol, 0.5% BSA and 0.02% sodium azide.
Source	Polyclonal, Rabbit,IgG
Purification	The antibody was affinity-purified from rabbit antiserum by affinity-chromatography using epitope-specific immunogen.
Dilution	IHC: 1/100 - 1/300. ELISA: 1/20000.. IF 1:50-200
Concentration	1 mg/ml
Purity	≥90%
Storage Stability	-20°C/1 year
Synonyms	CSNK1G1; Casein kinase I isoform gamma-1; CKI-gamma 1; CSNK1G2; CK1G2; Casein kinase I isoform gamma-2; CKI-gamma 2; CSNK1G3; Casein kinase I isoform gamma-3; CKI-gamma 3
Observed Band	
Cell Pathway	Cytoplasm.
Tissue Specificity	Brain,Muscle,Pooled,
Function	catalytic activity:ATP + a protein = ADP + a phosphoprotein.,function:Casein kinases are operationally defined by their preferential utilization of acidic proteins such as caseins as substrates. It can phosphorylate a large number of proteins. Participates in Wnt signaling.,PTM:Autophosphorylated.,similarity:Belongs to the protein kinase superfamily.,similarity:Belongs to the protein kinase superfamily. CK1 Ser/Thr protein kinase family. Casein kinase I subfamily.,similarity:Contains 1 protein kinase domain.,subunit:Monomer.,
Background	This gene encodes a member of the casein kinase I gene family. This family is comprised of serine/threonine kinases that phosphorylate acidic proteins such as caseins. The encoded kinase plays a role in cell cycle checkpoint arrest in



response to stalled replication forks by phosphorylating Claspin. A mutation in this gene may be associated with non-syndromic early-onset epilepsy (NSEOE). [provided by RefSeq, Jul 2016],

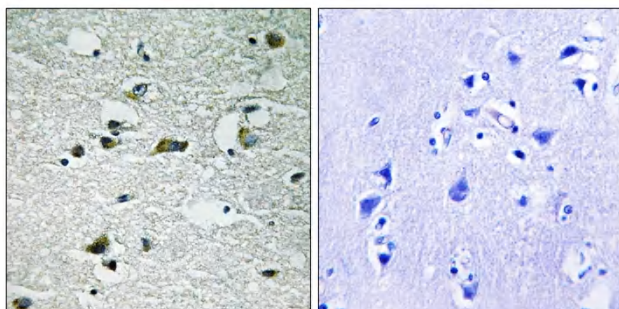
matters needing attention

Avoid repeated freezing and thawing!

Usage suggestions

This product can be used in immunological reaction related experiments. For more information, please consult technical personnel.

Products Images



Immunohistochemistry analysis of paraffin-embedded human brain, using CK-1 gamma1/2/3 (Phospho-Tyr263) Antibody. The picture on the right is blocked with the phospho peptide.