



FAK (Phospho Ser722) rabbit pAb

Catalog No	YP-Ab-14633
Isotype	IgG
Reactivity	Human;Mouse;Rat
Applications	WB; ELISA
Gene Name	PTK2 FAK FAK1
Protein Name	FAK (Phospho Ser722)
Immunogen	Synthesized peptide derived from human FAK (Phospho Ser722)
Specificity	This antibody detects endogenous levels of Human,Mouse,Rat FAK (Phospho Ser722)
Formulation	Liquid in PBS containing 50% glycerol, 0.5% BSA and 0.02% sodium azide.
Source	Polyclonal, Rabbit,IgG
Purification	The antibody was affinity-purified from rabbit serum by affinity-chromatography using specific immunogen.
Dilution	WB 1:1000-2000 ELISA 1:5000-20000
Concentration	1 mg/ml
Purity	≥90%
Storage Stability	-20°C/1 year
Synonyms	Focal adhesion kinase 1 (FADK 1;EC 2.7.10.2;Focal adhesion kinase-related nonkinase;FRNK;Protein phosphatase 1 regulatory subunit 71;PPP1R71;Protein-tyrosine kinase 2;p125FAK;pp125FAK)
Observed Band	125kD
Cell Pathway	Cell junction, focal adhesion. Cell membrane; Peripheral membrane protein; Cytoplasmic side. Cytoplasm, cell cortex. Cytoplasm, cytoskeleton. Cytoplasm, cytoskeleton, microtubule organizing center, centrosome . Nucleus. Cytoplasm, cytoskeleton, cilium basal body . Constituent of focal adhesions. Detected at microtubules.
Tissue Specificity	Detected in B and T-lymphocytes. Isoform 1 and isoform 6 are detected in lung fibroblasts (at protein level). Ubiquitous. Expressed in epithelial cells (at protein level) (PubMed:31630787).
Function	microtubule cytoskeleton organization, cell morphogenesis, cell morphogenesis involved in differentiation,angiogenesis, blood vessel development, vasculogenesis, neuron migration, vasculature development, protein complex assembly, protein amino acid phosphorylation, phosphorus metabolic process, phosphate metabolic process,cell motion, cytoskeleton organization, microtubule-based process, cell surface receptor linked signal transduction,enzyme linked receptor protein signaling pathway, transmembrane receptor protein tyrosine kinase signaling pathway, signal complex assembly, integrin-mediated signaling pathway, cell-cell



signaling, synaptic transmission, axonogenesis, negative regulation of cell development, regulation of cell morphogenesis involved in differentiation, regulation of neuron projection development, phosphorylation, cell migration, transmission of nerve impulse, central nerve

Background

catalytic activity:ATP + a [protein]-L-tyrosine = ADP + a [protein]-L-tyrosine phosphate.
domain:The carboxy-terminal region is the site of focal adhesion targeting (FAT) sequence which mediates the localization of FAK1 to focal adhesions.
domain:The first Pro-rich domain interacts with the SH3 domain of CRK-associated substrate (BCAR1) and CASL.
function:Non-receptor protein-tyrosine kinase implicated in signaling pathways involved in cell motility, proliferation and apoptosis. Activated by tyrosine-phosphorylation in response to either integrin clustering induced by cell adhesion or antibody cross-linking, or via G-protein coupled receptor (GPCR) occupancy by ligands such as bombesin or lysophosphatidic acid, or via LDL receptor occupancy. Plays a potential role in oncogenic transformations resulting in increased kinase activity.
PTM:Phosphorylated on 6 tyrosine residues upon activation.
similarity:Belongs to the protein kinase superfamily. Tyr protein kinase family.
similarity:Belongs to the protein kinase superfamily. Tyr protein kinase family. FAK subfamily.
similarity:Contains 1 FERM domain.
similarity:Contains 1 protein kinase domain.
subcellular location:Constituent of focal adhesions.
subunit:Interacts with CAS family members and with GIT1, SORBS1 and BCAR3. Interacts with RGFNEF and SHB (By similarity). Interacts with TGFB11.
tissue specificity:Expressed in all organs tested, in lymphoid cell lines, but most abundantly in brain.

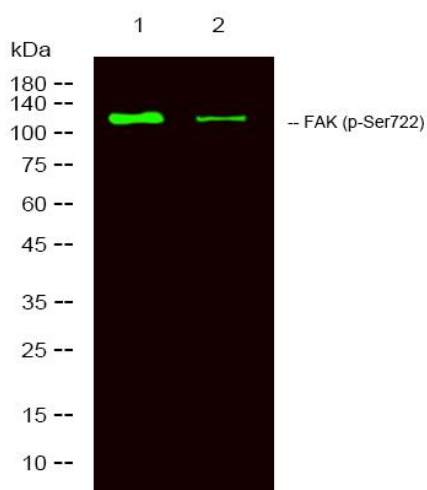
matters needing attention

Avoid repeated freezing and thawing!

Usage suggestions

This product can be used in immunological reaction related experiments. For more information, please consult technical personnel.

Products Images



Western Blot analysis of 1 MCF-7 treated with LPS, 2 MCF7, using primary antibody at 1:1000 dilution. Secondary antibody (catalog#:RS23920) was diluted at 1:10000