



# AAK1 Polyclonal Antibody

<b>Catalog No</b>	YP-Ab-14640
<b>Isotype</b>	IgG
<b>Reactivity</b>	Human;Mouse;Rat;Monkey
<b>Applications</b>	WB;IHC;IF;ELISA
<b>Gene Name</b>	AAK1
<b>Protein Name</b>	AP2-associated protein kinase 1
<b>Immunogen</b>	The antiserum was produced against synthesized peptide derived from human AAK1. AA range:271-320
<b>Specificity</b>	AAK1 Polyclonal Antibody detects endogenous levels of AAK1 protein.
<b>Formulation</b>	Liquid in PBS containing 50% glycerol, 0.5% BSA and 0.02% sodium azide.
<b>Source</b>	Polyclonal, Rabbit,IgG
<b>Purification</b>	The antibody was affinity-purified from rabbit antiserum by affinity-chromatography using epitope-specific immunogen.
<b>Dilution</b>	Western Blot: 1/500 - 1/2000. Immunohistochemistry: 1/100 - 1/300. Immunofluorescence: 1/200 - 1/1000. ELISA: 1/20000. Not yet tested in other applications.
<b>Concentration</b>	1 mg/ml
<b>Purity</b>	≥90%
<b>Storage Stability</b>	-20°C/1 year
<b>Synonyms</b>	AAK1; KIAA1048; AP2-associated protein kinase 1; Adaptor-associated kinase 1
<b>Observed Band</b>	94kD
<b>Cell Pathway</b>	Cell membrane ; Peripheral membrane protein . Membrane, clathrin-coated pit . Cell junction, synapse, presynapse . Active when found in clathrin-coated pits at the plasma membrane. In neuronal cells, enriched at presynaptic terminals. In non-neuronal cells, enriched at leading edge of migrating cells. .
<b>Tissue Specificity</b>	Detected in brain, heart and liver. Isoform 1 is the predominant isoform in brain.
<b>Function</b>	catalytic activity:ATP + a protein = ADP + a phosphoprotein.,enzyme regulation:Stimulated by clathrin.,function:Phosphorylates the AP2M1/mu2 subunit of the adaptor protein complex 2 (AP-2). May play a role in regulating aspects of clathrin-mediated endocytosis.,PTM:Autophosphorylated.,similarity:Belongs to the protein kinase superfamily. Ser/Thr protein kinase family.,similarity:Contains 1 protein kinase domain.,subcellular location:Active when found in clathrin-coated pits at the plasma membrane.,subunit:Interacts with alpha-adaptin and AP-2.,
<b>Background</b>	Adaptor-related protein complex 2 (AP-2 complexes) functions during receptor-mediated endocytosis to trigger clathrin assembly, interact with membrane-bound receptors, and recruit encodytic accessory factors. This gene



encodes a member of the SNF1 subfamily of Ser/Thr protein kinases. The protein interacts with and phosphorylates a subunit of the AP-2 complex, which promotes binding of AP-2 to sorting signals found in membrane-bound receptors and subsequent receptor endocytosis. Its kinase activity is stimulated by clathrin. Alternatively spliced transcript variants have been described, but their biological validity has not been determined. [provided by RefSeq, Jul 2008],

**matters needing attention**

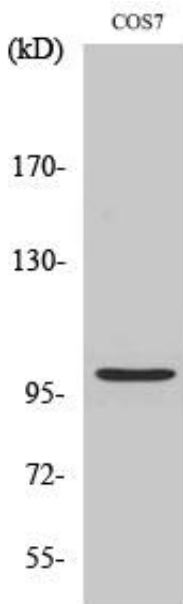
Avoid repeated freezing and thawing!

**Usage suggestions**

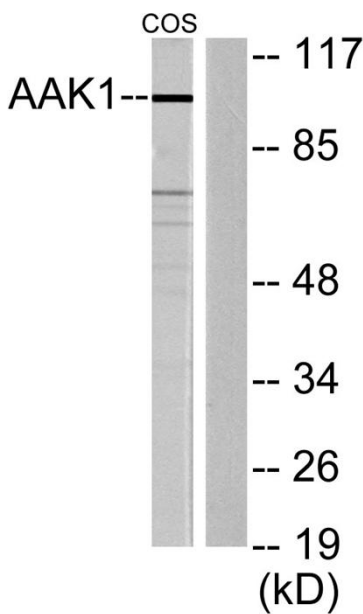
This product can be used in immunological reaction related experiments. For more information, please consult technical personnel.



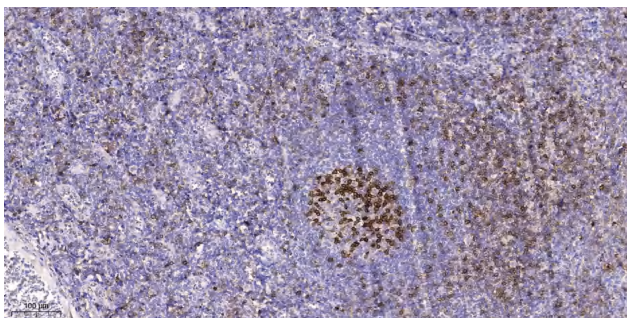
## Products Images



Western Blot analysis of various cells using AAK1 Polyclonal Antibody



Western blot analysis of lysates from COS7 cells, using AAK1 Antibody. The lane on the right is blocked with the synthesized peptide.



Immunohistochemical analysis of paraffin-embedded human tonsil. 1, Antibody was diluted at 1:200(4° overnight). 2, Tris-EDTA,pH9.0 was used for antigen retrieval. 3,Secondary antibody was diluted at 1:200(room temperature, 45min).