



# AK5 Polyclonal Antibody

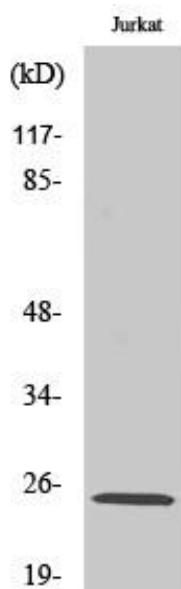
<b>Catalog No</b>	YP-Ab-14649
<b>Isotype</b>	IgG
<b>Reactivity</b>	Human;Mouse
<b>Applications</b>	WB;IHC;IF;ELISA
<b>Gene Name</b>	AK5
<b>Protein Name</b>	Adenylate kinase isoenzyme 5
<b>Immunogen</b>	The antiserum was produced against synthesized peptide derived from human AK5. AA range:391-440
<b>Specificity</b>	AK5 Polyclonal Antibody detects endogenous levels of AK5 protein.
<b>Formulation</b>	Liquid in PBS containing 50% glycerol, 0.5% BSA and 0.02% sodium azide.
<b>Source</b>	Polyclonal, Rabbit,IgG
<b>Purification</b>	The antibody was affinity-purified from rabbit antiserum by affinity-chromatography using epitope-specific immunogen.
<b>Dilution</b>	WB: 1/500 - 1/2000. IHC: 1/100 - 1/300. ELISA: 1/5000.. IF 1:50-200
<b>Concentration</b>	1 mg/ml
<b>Purity</b>	≥90%
<b>Storage Stability</b>	-20°C/1 year
<b>Synonyms</b>	AK5; Adenylate kinase isoenzyme 5; AK 5; ATP-AMP transphosphorylase 5
<b>Observed Band</b>	25kD
<b>Cell Pathway</b>	Cytoplasm .
<b>Tissue Specificity</b>	Brain specific.
<b>Function</b>	catalytic activity:ATP + AMP = 2 ADP.,function:Active on AMP and dAMP with ATP as a donor. When GTP is used as phosphate donor, the enzyme phosphorylates AMP, CMP, and to a small extent dCMP.,similarity:Belongs to the adenylate kinase family.,subunit:Monomer.,tissue specificity:Brain specific.,
<b>Background</b>	adenylate kinase 5(AK5) Homo sapiens This gene encodes a member of the adenylate kinase family, which is involved in regulating the adenine nucleotide composition within a cell by catalyzing the reversible transfer of phosphate groups among adenine nucleotides. This member is related to the UMP/CMP kinase of several species. It is located in the cytosol and expressed exclusively in brain. Alternatively spliced transcript variants encoding distinct isoforms have been identified for this gene. [provided by RefSeq, Jul 2008],
<b>matters needing attention</b>	Avoid repeated freezing and thawing!



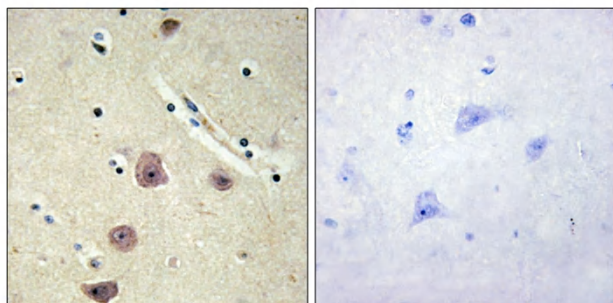
**Usage suggestions**

This product can be used in immunological reaction related experiments. For more information, please consult technical personnel.

**Products Images**



Western Blot analysis of various cells using AK5 Polyclonal Antibody



Immunohistochemistry analysis of paraffin-embedded human brain tissue, using AK5 Antibody. The picture on the right is blocked with the synthesized peptide.