



# A-Raf Polyclonal Antibody

<b>Catalog No</b>	YP-Ab-14665
<b>Isotype</b>	IgG
<b>Reactivity</b>	Human;Mouse;Rat;Monkey
<b>Applications</b>	WB;ELISA
<b>Gene Name</b>	ARAF
<b>Protein Name</b>	Serine/threonine-protein kinase A-Raf
<b>Immunogen</b>	The antiserum was produced against synthesized peptide derived from human A-RAF. AA range:241-290
<b>Specificity</b>	A-Raf Polyclonal Antibody detects endogenous levels of A-Raf protein.
<b>Formulation</b>	Liquid in PBS containing 50% glycerol, 0.5% BSA and 0.02% sodium azide.
<b>Source</b>	Polyclonal, Rabbit,IgG
<b>Purification</b>	The antibody was affinity-purified from rabbit antiserum by affinity-chromatography using epitope-specific immunogen.
<b>Dilution</b>	Western Blot: 1/500 - 1/2000. ELISA: 1/20000. Not yet tested in other applications.
<b>Concentration</b>	1 mg/ml
<b>Purity</b>	≥90%
<b>Storage Stability</b>	-20°C/1 year
<b>Synonyms</b>	ARAF; ARAF1; PKS; PKS2; Serine/threonine-protein kinase A-Raf; Proto-oncogene A-Raf; Proto-oncogene A-Raf-1; Proto-oncogene Pks
<b>Observed Band</b>	68kD
<b>Cell Pathway</b>	intracellular,mitochondrion,cytosol,
<b>Tissue Specificity</b>	Predominantly in urogenital tissues.
<b>Function</b>	catalytic activity:ATP + a protein = ADP + a phosphoprotein.,cofactor:Binds 2 zinc ions per subunit.,function:Involved in the transduction of mitogenic signals from the cell membrane to the nucleus.,similarity:Belongs to the protein kinase superfamily.,similarity:Belongs to the protein kinase superfamily. TKL Ser/Thr protein kinase family. RAF subfamily.,similarity:Contains 1 phorbol-ester/DAG-type zinc finger.,similarity:Contains 1 protein kinase domain.,similarity:Contains 1 RBD (Ras-binding) domain.,subunit:Interacts with TH1L/NELFD.,tissue specificity:Predominantly in urogenital tissues.,
<b>Background</b>	This proto-oncogene belongs to the RAF subfamily of the Ser/Thr protein kinase family, and maybe involved in cell growth and development. Alternatively spliced transcript variants encoding different isoforms have been found for this gene.[provided by RefSeq, Jan 2012],



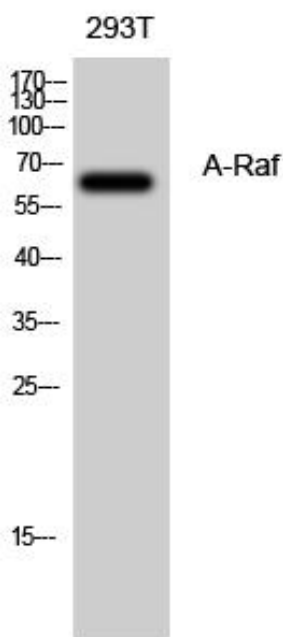
**matters needing attention**

Avoid repeated freezing and thawing!

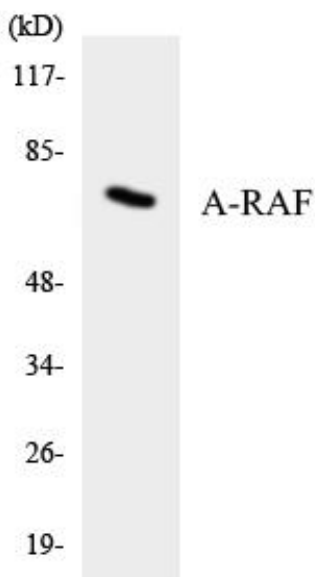
**Usage suggestions**

This product can be used in immunological reaction related experiments. For more information, please consult technical personnel.

## Products Images



Western Blot analysis of 293T cells using A-Raf Polyclonal Antibody diluted at 1:500



Western blot analysis of the lysates from HeLa cells using A-RAF antibody.