



CaMKI α Polyclonal Antibody

Catalog No	YP-Ab-14690
Isotype	IgG
Reactivity	Human;Mouse;Rat
Applications	WB;IHC;IF;ELISA
Gene Name	CAMK1
Protein Name	Calcium/calmodulin-dependent protein kinase type 1
Immunogen	The antiserum was produced against synthesized peptide derived from human CaMK1-alpha. AA range:143-192
Specificity	CaMKI α Polyclonal Antibody detects endogenous levels of CaMKI α protein.
Formulation	Liquid in PBS containing 50% glycerol, 0.5% BSA and 0.02% sodium azide.
Source	Polyclonal, Rabbit,IgG
Purification	The antibody was affinity-purified from rabbit antiserum by affinity-chromatography using epitope-specific immunogen.
Dilution	WB: 1/500 - 1/2000. IHC: 1/100 - 1/300. ELISA: 1/20000.. IF 1:50-200
Concentration	1 mg/ml
Purity	$\geq 90\%$
Storage Stability	-20°C/1 year
Synonyms	CAMK1; Calcium/calmodulin-dependent protein kinase type 1; CaM kinase I; CaM-KI; CaM kinase I alpha; CaMKI-alpha
Observed Band	45kD
Cell Pathway	Cytoplasm . Nucleus . Predominantly cytoplasmic. .
Tissue Specificity	Widely expressed. Expressed in cells of the zona glomerulosa of the adrenal cortex.
Function	catalytic activity:ATP + a protein = ADP + a phosphoprotein.,domain:The autoinhibitory domain overlaps with the calmodulin binding region and interacts in the inactive folded state with the catalytic domain as a pseudosubstrate.,enzyme regulation:Activated by Ca(2+)/calmodulin. Binding of calmodulin results in a conformational change that generates functional binding sites for both, substrate and ATP, and thus releases intrasteric autoinhibition. Must be phosphorylated to be maximally active. Phosphorylated by CAMKK1 or CAMKK2.,function:Calcium/calmodulin-dependent protein kinase belonging to a proposed calcium-triggered signaling cascade involved in a number of cellular processes like transcriptional regulation, hormone production, translational regulation, regulation of actin filament organization and neurite outgrowth. Involved in calcium-dependent activation of the ERK pathway (By si



Background

Calcium/calmodulin-dependent protein kinase I is expressed in many tissues and is a component of a calmodulin-dependent protein kinase cascade. Calcium/calmodulin directly activates calcium/calmodulin-dependent protein kinase I by binding to the enzyme and indirectly promotes the phosphorylation and synergistic activation of the enzyme by calcium/calmodulin-dependent protein kinase I kinase. [provided by RefSeq, Jul 2008],

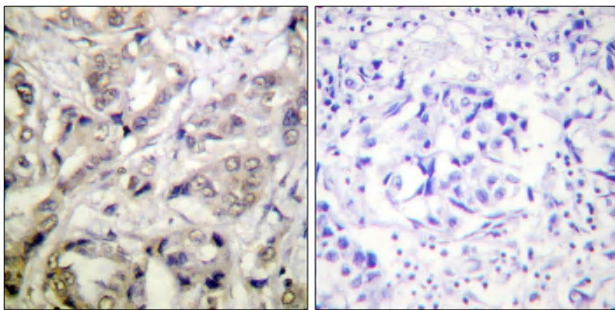
matters needing attention

Avoid repeated freezing and thawing!

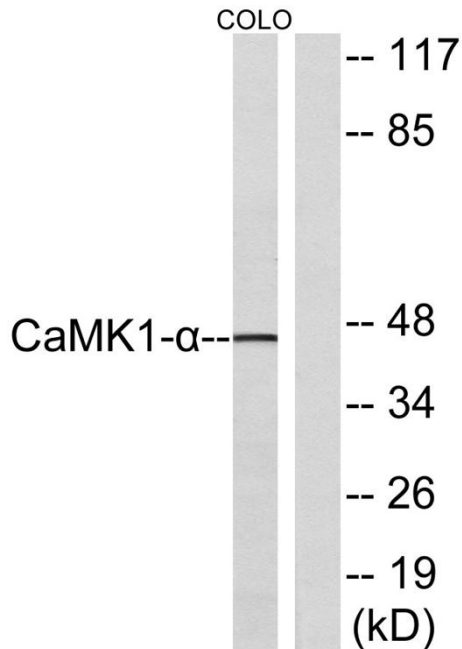
Usage suggestions

This product can be used in immunological reaction related experiments. For more information, please consult technical personnel.

Products Images



Immunohistochemistry analysis of paraffin-embedded human breast carcinoma tissue, using CaMK1-alpha Antibody. The picture on the right is blocked with the synthesized peptide.



Western blot analysis of lysates from COLO cells, using CaMK1-alpha Antibody. The lane on the right is blocked with the synthesized peptide.