



Citron Polyclonal Antibody

Catalog No	YP-Ab-14708
Isotype	IgG
Reactivity	Human;Mouse
Applications	IHC;IF;ELISA
Gene Name	CIT
Protein Name	Citron Rho-interacting kinase
Immunogen	The antiserum was produced against synthesized peptide derived from human CTRO. AA range:1011-1060
Specificity	Citron Polyclonal Antibody detects endogenous levels of Citron protein.
Formulation	Liquid in PBS containing 50% glycerol, 0.5% BSA and 0.02% sodium azide.
Source	Polyclonal, Rabbit,IgG
Purification	The antibody was affinity-purified from rabbit antiserum by affinity-chromatography using epitope-specific immunogen.
Dilution	IHC: 1/100 - 1/300. ELISA: 1/40000.. IF 1:50-200
Concentration	1 mg/ml
Purity	≥90%
Storage Stability	-20°C/1 year
Synonyms	CIT; CRİK; KIAA0949; STK21; Citron Rho-interacting kinase; CRİK; Serine/threonine-protein kinase 21
Observed Band	
Cell Pathway	Cytoplasm .
Tissue Specificity	Brain,Epithelium,
Function	catalytic activity:ATP + a protein = ADP + a phosphoprotein.,function:Required for KIF14 localization to the central spindle and midbody. May play a role in cytokinesis. Putative RHO/RAC effector that binds to the GTP-bound forms of RHO and RAC1. It probably binds p21 with a tighter specificity in vivo. Dual specificity protein kinase activity catalyzing autophosphorylation and phosphorylation of exogenous substrates on both serine/threonine and tyrosine residues. Plays an important role in the regulation of cytokinesis and the development of the central nervous system.,similarity:Belongs to the protein kinase superfamily.,similarity:Belongs to the protein kinase superfamily. AGC Ser/Thr protein kinase family.,similarity:Contains 1 AGC-kinase C-terminal domain.,similarity:Contains 1 CNH domain.,similarity:Contains 1 PH domain.,similarity:Contains 1 phorbol-ester/DAG-type zinc finger.,sim

**Background**

This gene encodes a serine/threonine-protein kinase that functions in cell division. Together with the kinesin KIF14, this protein localizes to the central spindle and midbody, and functions to promote efficient cytokinesis. This protein is involved in central nervous system development. Polymorphisms in this gene are associated with bipolar disorder and risk for schizophrenia. Alternative splicing results in multiple transcript variants. [provided by RefSeq, Aug 2011],

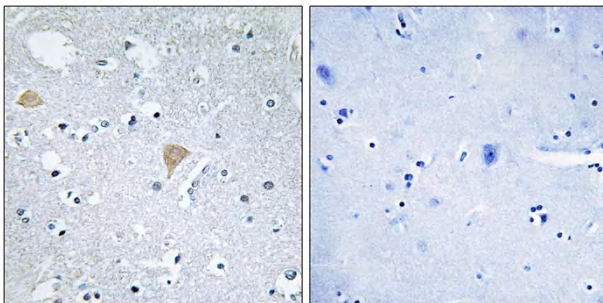
matters needing attention

Avoid repeated freezing and thawing!

Usage suggestions

This product can be used in immunological reaction related experiments. For more information, please consult technical personnel.

Products Images



Immunohistochemistry analysis of paraffin-embedded human brain tissue, using CTRO Antibody. The picture on the right is blocked with the synthesized peptide.