



Csk Polyclonal Antibody

Catalog No	YP-Ab-14713
Isotype	IgG
Reactivity	Human;Mouse;Rat
Applications	WB;IHC;IF;ELISA
Gene Name	CSK
Protein Name	Tyrosine-protein kinase CSK
Immunogen	The antiserum was produced against synthesized peptide derived from human CSK. AA range:330-379
Specificity	Csk Polyclonal Antibody detects endogenous levels of Csk protein.
Formulation	Liquid in PBS containing 50% glycerol, 0.5% BSA and 0.02% sodium azide.
Source	Polyclonal, Rabbit,IgG
Purification	The antibody was affinity-purified from rabbit antiserum by affinity-chromatography using epitope-specific immunogen.
Dilution	WB: 1/500 - 1/2000. IHC: 1/100 - 1/300. ELISA: 1/20000.. IF 1:50-200
Concentration	1 mg/ml
Purity	≥90%
Storage Stability	-20°C/1 year
Synonyms	CSK; Tyrosine-protein kinase CSK; C-Src kinase; Protein-tyrosine kinase CYL
Observed Band	50kD
Cell Pathway	Cytoplasm . Cell membrane . Mainly cytoplasmic, also present in lipid rafts. .
Tissue Specificity	Expressed in lung and macrophages.
Function	catalytic activity:ATP + a [protein]-L-tyrosine = ADP + a [protein]-L-tyrosine phosphate.,function:Specifically phosphorylates 'Tyr-504' on LCK, which acts as a negative regulatory site. Can also act on the LYN and FYN kinases.,PTM:Autophosphorylation of Tyr-304 occurs only at abnormally high CSK concentrations in vitro.,similarity:Belongs to the protein kinase superfamily. Tyr protein kinase family.,similarity:Belongs to the protein kinase superfamily. Tyr protein kinase family. CSK subfamily.,similarity:Contains 1 protein kinase domain.,similarity:Contains 1 SH2 domain.,similarity:Contains 1 SH3 domain.,subcellular location:Mainly cytoplasmic, also present in lipid rafts.,subunit:Interacts with PTPN8 (By similarity). Interacts with phosphorylated SIT1, PAG1, LIME1 and TGFB1I1.,tissue specificity:Expressed in lung and macrophages.,
Background	catalytic activity:ATP + a [protein]-L-tyrosine = ADP + a [protein]-L-tyrosine phosphate.,function:Specifically phosphorylates 'Tyr-504' on LCK, which acts as a



negative regulatory site. Can also act on the LYN and FYN kinases.,PTM:Autophosphorylation of Tyr-304 occurs only at abnormally high CSK concentrations in vitro.,similarity:Belongs to the protein kinase superfamily. Tyr protein kinase family.,similarity:Belongs to the protein kinase superfamily. Tyr protein kinase family. CSK subfamily.,similarity:Contains 1 protein kinase domain.,similarity:Contains 1 SH2 domain.,similarity:Contains 1 SH3 domain.,subcellular location:Mainly cytoplasmic, also present in lipid rafts.,subunit:Interacts with PTPN8 (By similarity). Interacts with phosphorylated SIT1, PAG1, LIME1 and TGFB111.,tissue specificity:Expressed in lung and macrophages.,

matters needing attention

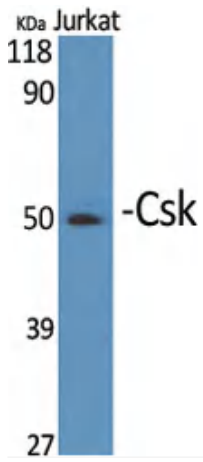
Avoid repeated freezing and thawing!

Usage suggestions

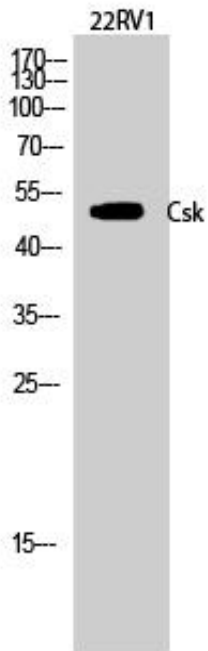
This product can be used in immunological reaction related experiments. For more information, please consult technical personnel.



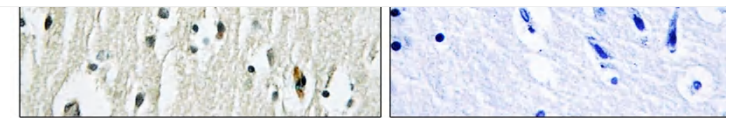
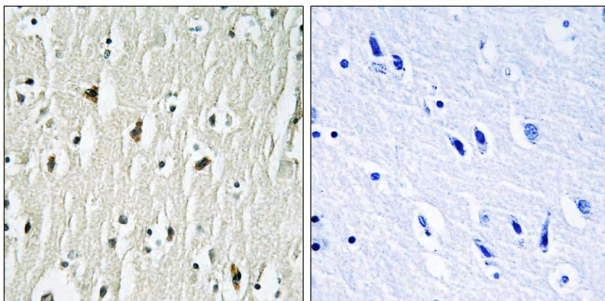
Products Images



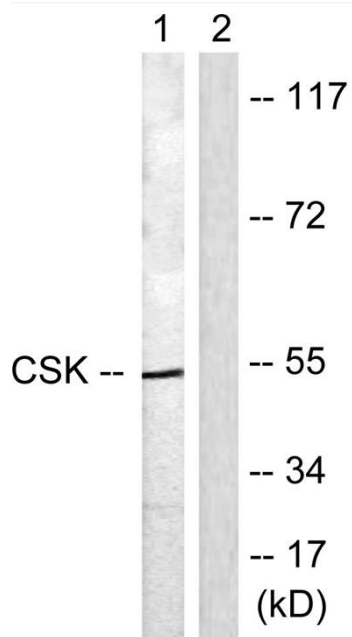
Western Blot analysis of various cells using Csk Polyclonal Antibody diluted at 1:1000



Western Blot analysis of 22RV1 cells using Csk Polyclonal Antibody diluted at 1:1000



on the right is blocked with the synthesized peptide.



Western blot analysis of lysates from Raw264.7 cells, treated with UV 5', using CSK Antibody. The lane on the right is blocked with the synthesized peptide.