



# GK2 Polyclonal Antibody

|                           |   |
|---------------------------|---|
| <b>Catalog No</b>         | YP-Ab-14758   |
| <b>Isotype</b>            | IgG   |
| <b>Reactivity</b>         | Human;Rat;Mouse;  |
| <b>Applications</b>       | WB;IHC;IF;ELISA   |
| <b>Gene Name</b>          | GK2   |
| <b>Protein Name</b>       | Glycerol kinase 2   |
| <b>Immunogen</b>          | The antiserum was produced against synthesized peptide derived from human GK2. AA range:281-330   |
| <b>Specificity</b>        | GK2 Polyclonal Antibody detects endogenous levels of GK2 protein.   |
| <b>Formulation</b>        | Liquid in PBS containing 50% glycerol, 0.5% BSA and 0.02% sodium azide.   |
| <b>Source</b>             | Polyclonal, Rabbit,IgG  |
| <b>Purification</b>       | The antibody was affinity-purified from rabbit antiserum by affinity-chromatography using epitope-specific immunogen.   |
| <b>Dilution</b>           | Western Blot: 1/500 - 1/2000. Immunohistochemistry: 1/100 - 1/300. Immunofluorescence: 1/200 - 1/1000. ELISA: 1/20000. Not yet tested in other applications.  |
| <b>Concentration</b>      | 1 mg/ml   |
| <b>Purity</b>             | ≥90%  |
| <b>Storage Stability</b>  | -20°C/1 year  |
| <b>Synonyms</b>           | GK2; GKP2; GKTA; Glycerol kinase 2; GK 2; Glycerokinase 2; ATP:glycerol 3-phosphotransferase 2; Glycerol kinase; testis specific 2  |
| <b>Observed Band</b>      | 61kD  |
| <b>Cell Pathway</b>       | Mitochondrion outer membrane ; Single-pass type IV membrane protein . Cytoplasm . In sperm the majority of the enzyme is bound to mitochondria. .   |
| <b>Tissue Specificity</b> | Testis-specific (PubMed:33536340). Expressed in the midpiece of spermatozoa (PubMed:28852571).  |
| <b>Function</b>           | catalytic activity:ATP + glycerol = ADP + sn-glycerol 3-phosphate.,function:Key enzyme in the regulation of glycerol uptake and metabolism.,pathway:Polyol metabolism; glycerol degradation via glycerol kinase pathway; sn-glycerol 3-phosphate from glycerol: step 1/1.,similarity:Belongs to the FGGY kinase family.,subcellular location:In sperm the majority of the enzyme is bound to mitochondria., |
| <b>Background</b>         | catalytic activity:ATP + glycerol = ADP + sn-glycerol 3-phosphate.,function:Key enzyme in the regulation of glycerol uptake and metabolism.,pathway:Polyol metabolism; glycerol degradation via glycerol kinase pathway; sn-glycerol 3-phosphate from glycerol: step 1/1.,similarity:Belongs to the FGGY kinase family.,subcellular location:In sperm the majority of the enzyme is bound to mitochondria., |



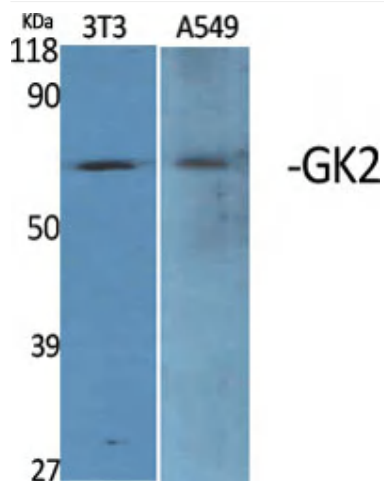
matters needing attention

Avoid repeated freezing and thawing!

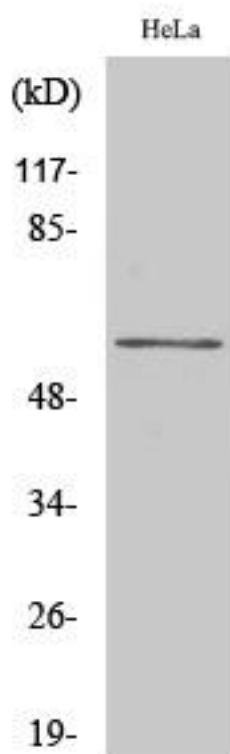
Usage suggestions

This product can be used in immunological reaction related experiments. For more information, please consult technical personnel.

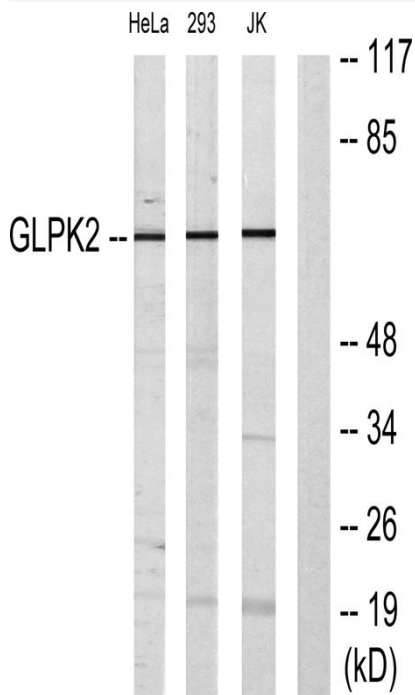
## Products Images



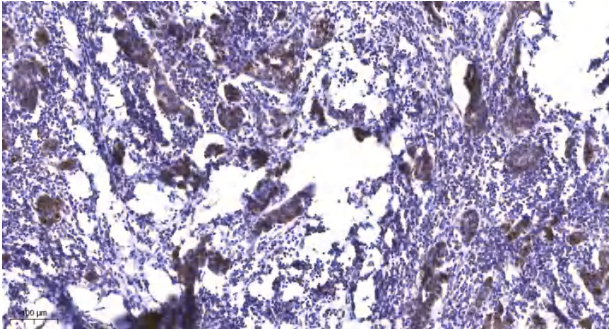
Western Blot analysis of various cells using GK2 Polyclonal Antibody



Western Blot analysis of Jurkat cells using GK2 Polyclonal Antibody



Western blot analysis of lysates from HeLa, 293, and Jurkat cells, using GK2 Antibody. The lane on the right is blocked with the synthesized peptide.



Immunohistochemical analysis of paraffin-embedded human Breast cancer. 1, Antibody was diluted at 1:200(4° overnight). 2, Tris-EDTA,pH9.0 was used for antigen retrieval. 3,Secondary antibody was diluted at 1:200(room temperature, 45min).