



# GLK Polyclonal Antibody

<b>Catalog No</b>	YP-Ab-14760
<b>Isotype</b>	IgG
<b>Reactivity</b>	Human;Mouse;Rat
<b>Applications</b>	WB;ELISA
<b>Gene Name</b>	MAP4K3
<b>Protein Name</b>	Mitogen-activated protein kinase kinase kinase 3
<b>Immunogen</b>	The antiserum was produced against synthesized peptide derived from human MAP4K3. AA range:10-59
<b>Specificity</b>	GLK Polyclonal Antibody detects endogenous levels of GLK protein.
<b>Formulation</b>	Liquid in PBS containing 50% glycerol, 0.5% BSA and 0.02% sodium azide.
<b>Source</b>	Polyclonal, Rabbit,IgG
<b>Purification</b>	The antibody was affinity-purified from rabbit antiserum by affinity-chromatography using epitope-specific immunogen.
<b>Dilution</b>	Western Blot: 1/500 - 1/2000. ELISA: 1/20000. Not yet tested in other applications.
<b>Concentration</b>	1 mg/ml
<b>Purity</b>	≥90%
<b>Storage Stability</b>	-20°C/1 year
<b>Synonyms</b>	MAP4K3; RAB8IPL1; Mitogen-activated protein kinase kinase kinase 3; Germinal center kinase-related protein kinase; GLK; MAPK/ERK kinase kinase 3; MEK kinase kinase 3; MEKKK 3
<b>Observed Band</b>	101kD
<b>Cell Pathway</b>	intracellular,cytoplasm,
<b>Tissue Specificity</b>	Ubiquitously expressed in all tissues examined, with high levels in heart, brain, placenta, skeletal muscle, kidney and pancreas and lower levels in lung and liver.
<b>Function</b>	catalytic activity:ATP + a protein = ADP + a phosphoprotein.,cofactor:Magnesium.,function:May play a role in the response to environmental stress. Appears to act upstream of the JUN N-terminal pathway.,similarity:Belongs to the protein kinase superfamily. STE Ser/Thr protein kinase family. STE20 subfamily.,similarity:Contains 1 CNH domain.,similarity:Contains 1 protein kinase domain.,subunit:Interacts with SH3GL2. Interaction appears to regulate MAP4K3-mediated JNK activation.,tissue specificity:Ubiquitously expressed in all tissues examined, with high levels in heart, brain, placenta, skeletal muscle, kidney and pancreas and lower levels in lung and liver.,
<b>Background</b>	mitogen-activated protein kinase kinase kinase 3(MAP4K3) Homo sapiens This gene encodes a member of the mitogen-activated protein kinase kinase



kinase kinase family. The encoded protein activates key effectors in cell signalling, among them c-Jun. Alternatively spliced transcripts encoding multiple isoforms have been observed for this gene. [provided by RefSeq, Jul 2012],

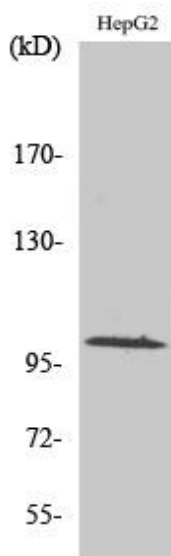
**matters needing attention**

Avoid repeated freezing and thawing!

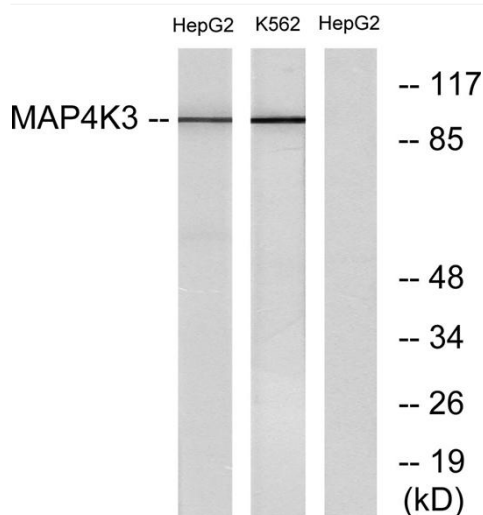
**Usage suggestions**

This product can be used in immunological reaction related experiments. For more information, please consult technical personnel.

**Products Images**



Western Blot analysis of various cells using GLK Polyclonal Antibody



Western blot analysis of lysates from HepG2 and K562 cells, using MAP4K3 Antibody. The lane on the right is blocked with the synthesized peptide.