



# GRK 4 Polyclonal Antibody

<b>Catalog No</b>	YP-Ab-14765
<b>Isotype</b>	IgG
<b>Reactivity</b>	Human;Rat;Mouse;
<b>Applications</b>	IHC;IF;ELISA
<b>Gene Name</b>	GRK4
<b>Protein Name</b>	G protein-coupled receptor kinase 4
<b>Immunogen</b>	Synthesized peptide derived from GRK 4 . at AA range: 10-90
<b>Specificity</b>	GRK 4 Polyclonal Antibody detects endogenous levels of GRK 4 protein.
<b>Formulation</b>	Liquid in PBS containing 50% glycerol, 0.5% BSA and 0.02% sodium azide.
<b>Source</b>	Polyclonal, Rabbit,IgG
<b>Purification</b>	The antibody was affinity-purified from rabbit antiserum by affinity-chromatography using epitope-specific immunogen.
<b>Dilution</b>	IHC: 1/100 - 1/300. ELISA: 1/40000.. IF 1:50-200
<b>Concentration</b>	1 mg/ml
<b>Purity</b>	≥90%
<b>Storage Stability</b>	-20°C/1 year
<b>Synonyms</b>	GRK4; GPRK2L; GPRK4; G protein-coupled receptor kinase 4; G protein-coupled receptor kinase GRK4; IT11
<b>Observed Band</b>	
<b>Cell Pathway</b>	Cytoplasm. Cytoplasm, cell cortex. Both at the cell surface and dispersed in the cytoplasm under basal conditions. Receptor stimulation results in the internalization of GRK4 to the perinuclear area, where colocalization with DRD3 is observed strongly at 5 and 15 minutes. DRD3 and GRK4 colocalize in lipid rafts of renal proximal tubule cells.
<b>Tissue Specificity</b>	Isoform 1, isoform 2, isoform 3, and isoform 4 are expressed in testis. Isoform 4 is expressed in myometrium.
<b>Function</b>	catalytic activity:ATP + [G-protein-coupled receptor] = ADP + [G-protein-coupled receptor] phosphate.,function:Specifically phosphorylates the activated forms of G protein-coupled receptors. GRK4-alpha can phosphorylate rhodopsin and its activity is inhibited by calmodulin; the other three isoforms do not phosphorylate rhodopsin and do not interact with calmodulin.,similarity:Belongs to the protein kinase superfamily. AGC Ser/Thr protein kinase family. GPRK subfamily.,similarity:Contains 1 AGC-kinase C-terminal domain.,similarity:Contains 1 protein kinase domain.,similarity:Contains 1 RGS domain.,tissue specificity:Testis, and in a lower extent in other tissues including brain cortex and striatum.,

**Background**

This gene encodes a member of the guanine nucleotide-binding protein (G protein)-coupled receptor kinase subfamily of the Ser/Thr protein kinase family. The protein phosphorylates the activated forms of G protein-coupled receptors thus initiating its deactivation. This gene has been linked to both genetic and acquired hypertension. Several transcript variants encoding different isoforms have been found for this gene. [provided by RefSeq, Nov 2013],

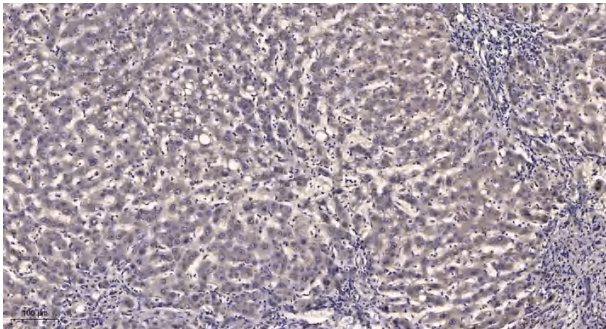
**matters needing attention**

Avoid repeated freezing and thawing!

**Usage suggestions**

This product can be used in immunological reaction related experiments. For more information, please consult technical personnel.

## Products Images



Immunohistochemical analysis of paraffin-embedded human liver cancer. 1, Antibody was diluted at 1:200(4° overnight). 2, Tris-EDTA,pH9.0 was used for antigen retrieval. 3,Secondary antibody was diluted at 1:200(room temperature, 45min).