



GRK 5 Polyclonal Antibody

Catalog No	YP-Ab-14766
Isotype	IgG
Reactivity	Human;Mouse;Rat
Applications	WB;IHC;IF;ELISA
Gene Name	GRK5
Protein Name	G protein-coupled receptor kinase 5
Immunogen	The antiserum was produced against synthesized peptide derived from human GRK5. AA range:351-400
Specificity	GRK 5 Polyclonal Antibody detects endogenous levels of GRK 5 protein.
Formulation	Liquid in PBS containing 50% glycerol, 0.5% BSA and 0.02% sodium azide.
Source	Polyclonal, Rabbit,IgG
Purification	The antibody was affinity-purified from rabbit antiserum by affinity-chromatography using epitope-specific immunogen.
Dilution	WB: 1/500 - 1/2000. IHC: 1/100 - 1/300. ELISA: 1/10000.. IF 1:50-200
Concentration	1 mg/ml
Purity	≥90%
Storage Stability	-20°C/1 year
Synonyms	GRK5; GPRK5; G protein-coupled receptor kinase 5; G protein-coupled receptor kinase GRK5
Observed Band	68kD
Cell Pathway	Cytoplasm. Nucleus. Cell membrane; Peripheral membrane protein. Predominantly localized at the plasma membrane; targeted to the cell surface through the interaction with phospholipids. Nucleus localization is regulated in a GPCR and Ca(2+)/calmodulin-dependent fashion.
Tissue Specificity	Highest levels in heart, placenta, lung > skeletal muscle > brain, liver, pancreas > kidney.
Function	catalytic activity:ATP + [G-protein-coupled receptor] = ADP + [G-protein-coupled receptor] phosphate.,function:Specifically phosphorylates the activated forms of G protein-coupled receptors.,similarity:Belongs to the protein kinase superfamily. AGC Ser/Thr protein kinase family. GPRK subfamily.,similarity:Contains 1 AGC-kinase C-terminal domain.,similarity:Contains 1 protein kinase domain.,similarity:Contains 1 RGS domain.,tissue specificity:Highest levels in heart, placenta, lung > skeletal muscle > brain, liver, pancreas > kidney.,
Background	This gene encodes a member of the guanine nucleotide-binding protein (G protein)-coupled receptor kinase subfamily of the Ser/Thr protein kinase family. The protein phosphorylates the activated forms of G protein-coupled receptors thus initiating their deactivation. It has also been shown to play a role in regulating



the motility of polymorphonuclear leukocytes (PMNs). [provided by RefSeq, Jul 2008],

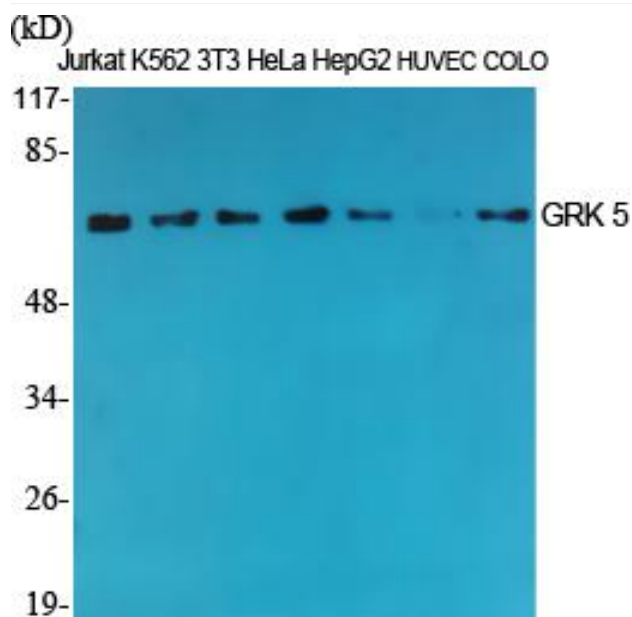
matters needing attention

Avoid repeated freezing and thawing!

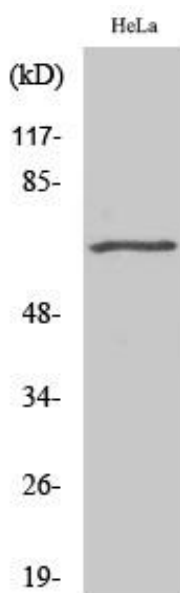
Usage suggestions

This product can be used in immunological reaction related experiments. For more information, please consult technical personnel.

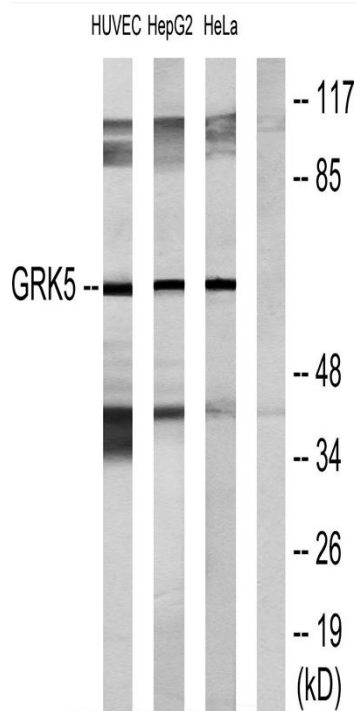
Products Images



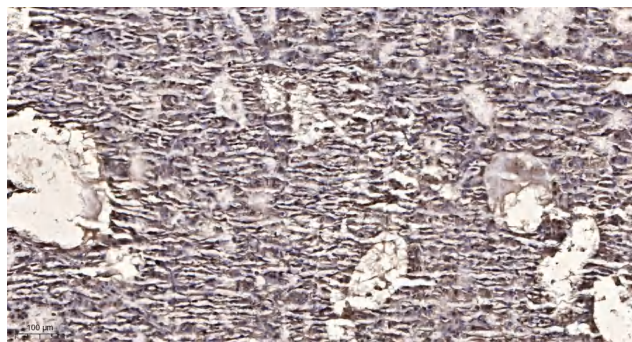
Western Blot analysis of various cells using GRK 5 Polyclonal Antibody



Western Blot analysis of COLO205 cells using GRK 5 Polyclonal Antibody



Western blot analysis of lysates from HeLa, HepG2, and HUVEC cells, using GRK5 Antibody. The lane on the right is blocked with the synthesized peptide.



Immunohistochemical analysis of paraffin-embedded human liver cancer. 1, Antibody was diluted at 1:200(4° overnight). 2, Tris-EDTA, pH9.0 was used for antigen retrieval. 3, Secondary antibody was diluted at 1:200(room temperature, 45min).