



IKKy Polyclonal Antibody

Catalog No	YP-Ab-14783
Isotype	IgG
Reactivity	Human;Rat;Mouse;
Applications	WB;IHC;IF;ELISA
Gene Name	IKBKG
Protein Name	NF-kappa-B essential modulator
Immunogen	The antiserum was produced against synthesized peptide derived from human IKK-gamma. AA range:51-100
Specificity	IKKy Polyclonal Antibody detects endogenous levels of IKKy protein.
Formulation	Liquid in PBS containing 50% glycerol, 0.5% BSA and 0.02% sodium azide.
Source	Polyclonal, Rabbit,IgG
Purification	The antibody was affinity-purified from rabbit antiserum by affinity-chromatography using epitope-specific immunogen.
Dilution	Western Blot: 1/500 - 1/2000. Immunohistochemistry: 1/100 - 1/300. Immunofluorescence: 1/200 - 1/1000. ELISA: 1/20000. Not yet tested in other applications.
Concentration	1 mg/ml
Purity	≥90%
Storage Stability	-20°C/1 year
Synonyms	IKBKG; FIP3; NEMO; NF-kappa-B essential modulator; NEMO; FIP-3; IκB kinase-associated protein 1; IKKAP1; Inhibitor of nuclear factor kappa-B kinase subunit gamma; I-kappa-B kinase subunit gamma; IKK-gamma; IKKG; IκB kinase subunit gamma; NF
Observed Band	43kD
Cell Pathway	Cytoplasm . Nucleus . Sumoylated NEMO accumulates in the nucleus in response to genotoxic stress. .
Tissue Specificity	Heart, brain, placenta, lung, liver, skeletal muscle, kidney and pancreas.
Function	caution:The sequence shown here is derived from an Ensembl automatic analysis pipeline and should be considered as preliminary data.,disease:Defects in IKBKG are a cause of immunodeficiency without anhidrotic ectodermal dysplasia [MIM:300584]; also called isolated immunodeficiency or pure immunodeficiency. Patients manifest immunodeficiency not associated with other abnormalities, and resulting in increased infection susceptibility. Patients suffer from multiple episodes of infectious diseases.,disease:Defects in IKBKG are the cause of ectodermal dysplasia anhidrotic with immunodeficiency X-linked (EDAXID) [MIM:300291]; also known as hypohidrotic ectodermal dysplasia with immunodeficiency (HED-ID). Ectodermal dysplasia defines a heterogeneous



group of disorders due to abnormal development of two or more ectodermal structures. EDAXID is characterized by absence of sweat glands, sparse sca

Background

This gene encodes the regulatory subunit of the inhibitor of kappaB kinase (IKK) complex, which activates NF-kappaB resulting in activation of genes involved in inflammation, immunity, cell survival, and other pathways. Mutations in this gene result in incontinentia pigmenti, hypohidrotic ectodermal dysplasia, and several other types of immunodeficiencies. A pseudogene highly similar to this locus is located in an adjacent region of the X chromosome. [provided by RefSeq, Mar 2016],

matters needing attention

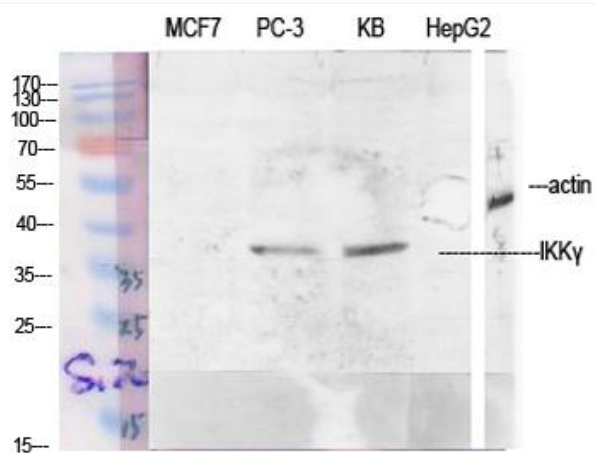
Avoid repeated freezing and thawing!

Usage suggestions

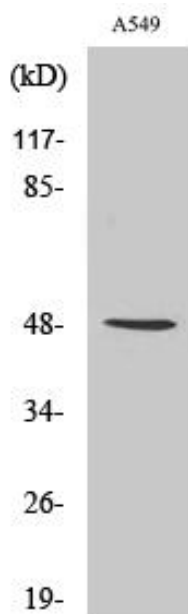
This product can be used in immunological reaction related experiments. For more information, please consult technical personnel.



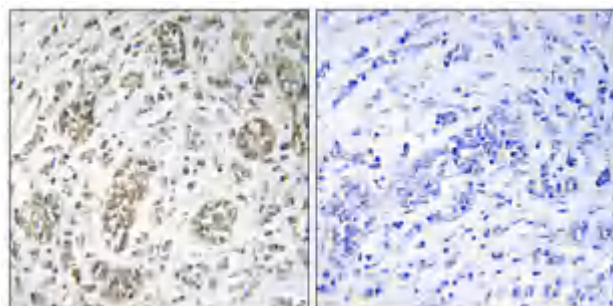
Products Images



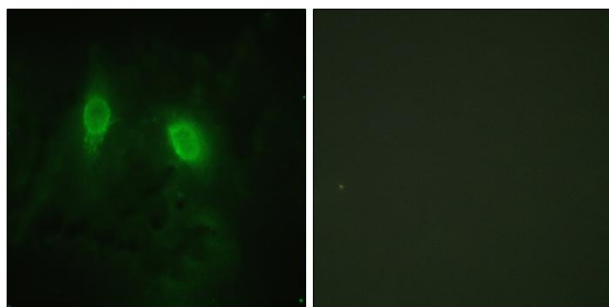
Western Blot analysis of various cells using IKKy Polyclonal Antibody diluted at 1:1000



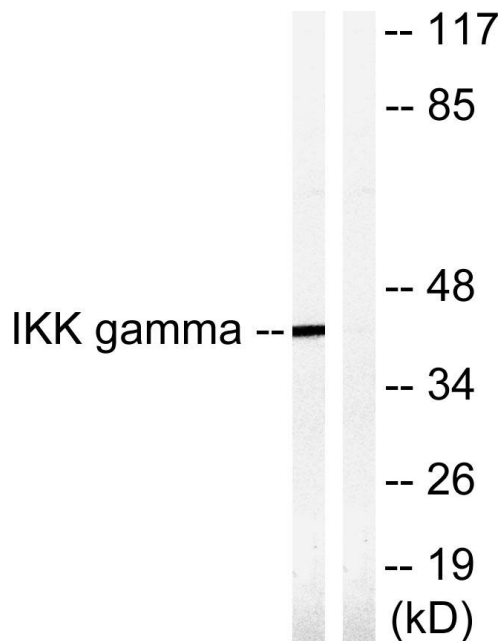
Western Blot analysis of RAW264.7 cells using IKKy Polyclonal Antibody diluted at 1:1000



Immunohistochemical analysis of paraffin-embedded Human breast cancer. Antibody was diluted at 1:100(4° overnight). High-pressure and temperature Tris-EDTA,pH8.0 was used for antigen retrieval. Negative contrl (right) obtained from antibody was pre-absorbed by immunogen peptide.



Immunofluorescence analysis of HeLa cells, using IKK-gamma Antibody. The picture on the right is blocked with the synthesized peptide.



Western blot analysis of lysates from HepG2 cells, treated with Anisomycin 0.5uM 5h, using IKK-gamma Antibody. The lane on the right is blocked with the synthesized peptide.