



ILKAP Polyclonal Antibody

Catalog No	YP-Ab-14785
Isotype	IgG
Reactivity	Human;Mouse;Rat;Monkey
Applications	WB;IHC;IF;ELISA
Gene Name	ILKAP
Protein Name	Integrin-linked kinase-associated serine/threonine phosphatase 2C
Immunogen	The antiserum was produced against synthesized peptide derived from human ILKAP. AA range:41-90
Specificity	ILKAP Polyclonal Antibody detects endogenous levels of ILKAP protein.
Formulation	Liquid in PBS containing 50% glycerol, 0.5% BSA and 0.02% sodium azide.
Source	Polyclonal, Rabbit,IgG
Purification	The antibody was affinity-purified from rabbit antiserum by affinity-chromatography using epitope-specific immunogen.
Dilution	Western Blot: 1/500 - 1/2000. Immunohistochemistry: 1/100 - 1/300. Immunofluorescence: 1/200 - 1/1000. ELISA: 1/20000. Not yet tested in other applications.
Concentration	1 mg/ml
Purity	≥90%
Storage Stability	-20°C/1 year
Synonyms	ILKAP; Integrin-linked kinase-associated serine/threonine phosphatase 2C; ILKAP
Observed Band	45kD
Cell Pathway	Cytoplasm .
Tissue Specificity	Widely expressed. Highest levels expressed in striated muscle. Much lower levels evident in various smooth muscle tissues.
Function	<p>catalytic activity:A phosphoprotein + H(2)O = a protein + phosphate.,cofactor:Binds 2 magnesium or manganese ions per subunit.,function:Protein phosphatase that may play a role in regulation of cell cycle progression via dephosphorylation of its substrates whose appropriate phosphorylation states might be crucial for cell proliferation. Selectively associates with integrin linked kinase (ILK), to modulate cell adhesion and growth factor signaling. Inhibits the ILK-GSK3B signaling axis and may play an important role in inhibiting oncogenic transformation.,induction:Inhibited rather than stimulated by Magnesium.,similarity:Belongs to the PP2C family.,similarity:Contains 1 PP2C-like domain.,subunit:Interacts with ILK. Specific association with ILK is independent of the catalytic activity of either partner.,tissue specificity:Widely expressed. Highest levels expressed in striated muscle. Muc</p>

**Background**

The protein encoded by this gene is a protein serine/threonine phosphatase of the PP2C family. This protein can interact with integrin-linked kinase (ILK/ILK1), a regulator of integrin mediated signaling, and regulate the kinase activity of ILK. Through the interaction with ILK, this protein may selectively affect the signaling process of ILK-mediated glycogen synthase kinase 3 beta (GSK3beta), and thus participate in Wnt signaling pathway. [provided by RefSeq, Jul 2008],

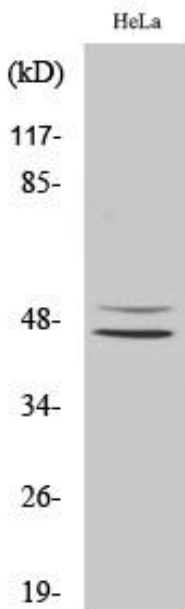
matters needing attention

Avoid repeated freezing and thawing!

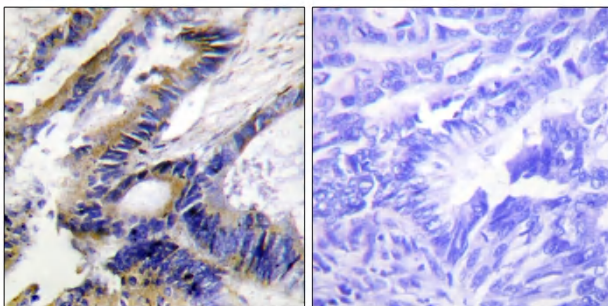
Usage suggestions

This product can be used in immunological reaction related experiments. For more information, please consult technical personnel.

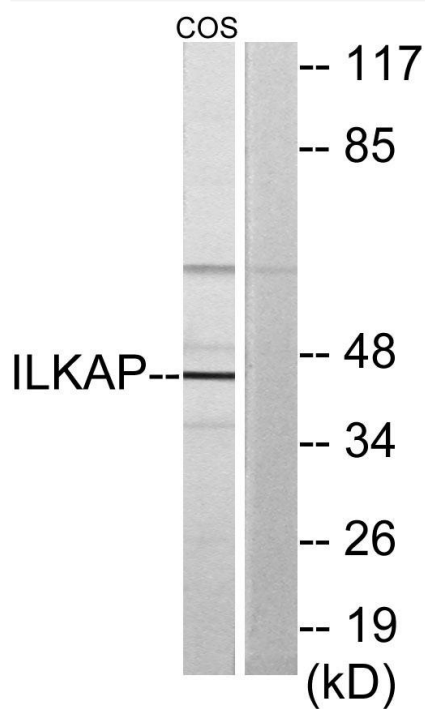
Products Images



Western Blot analysis of various cells using ILKAP Polyclonal Antibody



Immunohistochemistry analysis of paraffin-embedded human colon carcinoma tissue, using ILKAP Antibody. The picture on the right is blocked with the synthesized peptide.



Western blot analysis of lysates from COS7 cells, using ILKAP Antibody. The lane on the right is blocked with the synthesized peptide.