



# Ksr2 Polyclonal Antibody

<b>Catalog No</b>	YP-Ab-14811
<b>Isotype</b>	IgG
<b>Reactivity</b>	Human;Mouse
<b>Applications</b>	WB;IHC;IF;ELISA
<b>Gene Name</b>	KSR2
<b>Protein Name</b>	Kinase suppressor of Ras 2
<b>Immunogen</b>	The antiserum was produced against synthesized peptide derived from human KSR2. AA range:671-720
<b>Specificity</b>	Ksr2 Polyclonal Antibody detects endogenous levels of Ksr2 protein.
<b>Formulation</b>	Liquid in PBS containing 50% glycerol, 0.5% BSA and 0.02% sodium azide.
<b>Source</b>	Polyclonal, Rabbit,IgG
<b>Purification</b>	The antibody was affinity-purified from rabbit antiserum by affinity-chromatography using epitope-specific immunogen.
<b>Dilution</b>	Western Blot: 1/500 - 1/2000. Immunohistochemistry: 1/100 - 1/300. Immunofluorescence: 1/200 - 1/1000. ELISA: 1/40000. Not yet tested in other applications.
<b>Concentration</b>	1 mg/ml
<b>Purity</b>	≥90%
<b>Storage Stability</b>	-20°C/1 year
<b>Synonyms</b>	KSR2; Kinase suppressor of Ras 2; hKSR2
<b>Observed Band</b>	108kD
<b>Cell Pathway</b>	Cytoplasm . Membrane ; Peripheral membrane protein .
<b>Tissue Specificity</b>	Mainly expressed in brain and kidney.
<b>Function</b>	domain:The protein kinase domain is predicted to be catalytically inactive.,function:Location-regulated scaffold connecting MEK to RAF. Blocks MAP3K8 kinase activity and MAP3K8-mediated signaling. Acts as a negative regulator of MAP3K3-mediated activation of ERK, JNK and NF-kappa-B pathways, inhibiting MAP3K3-mediated interleukin-8 production.,PTM:Phosphorylated on Ser-474 by MARK3.,similarity:Belongs to the protein kinase superfamily. TKL Ser/Thr protein kinase family.,similarity:Contains 1 phorbol-ester/DAG-type zinc finger.,similarity:Contains 1 protein kinase domain.,subunit:Interacts with MAP2K1, MAP3K8, MAPK, RAS and RAF.,tissue specificity:Mainly expressed in brain and kidney.,
<b>Background</b>	domain:The protein kinase domain is predicted to be catalytically inactive.,function:Location-regulated scaffold connecting MEK to RAF. Blocks MAP3K8 kinase activity and MAP3K8-mediated signaling. Acts as a negative



regulator of MAP3K3-mediated activation of ERK, JNK and NF-kappa-B pathways, inhibiting MAP3K3-mediated interleukin-8 production.,PTM:Phosphorylated on Ser-474 by MARK3.,similarity:Belongs to the protein kinase superfamily. TKL Ser/Thr protein kinase family.,similarity:Contains 1 phorbol-ester/DAG-type zinc finger.,similarity:Contains 1 protein kinase domain.,subunit:Interacts with MAP2K1, MAP3K8, MAPK, RAS and RAF.,tissue specificity:Mainly expressed in brain and kidney.,

**matters needing attention**

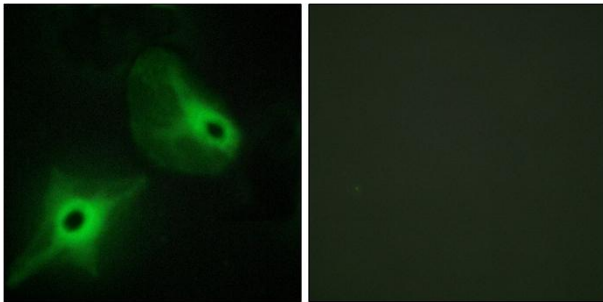
Avoid repeated freezing and thawing!

**Usage suggestions**

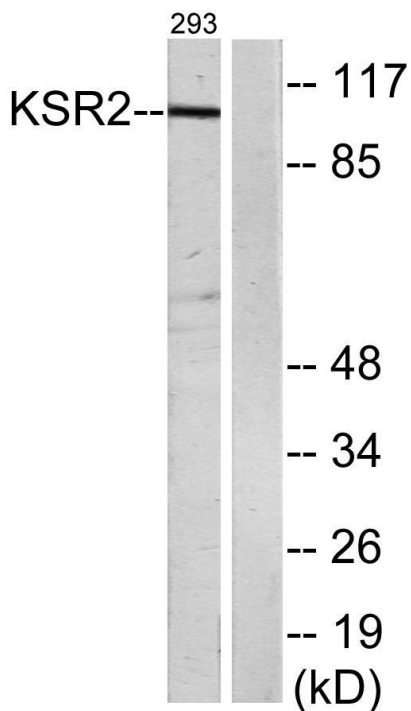
This product can be used in immunological reaction related experiments. For more information, please consult technical personnel.



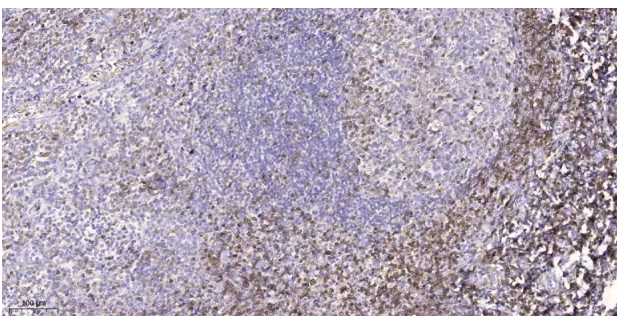
## Products Images



Immunofluorescence analysis of HeLa cells, using KSR2 Antibody. The picture on the right is blocked with the synthesized peptide.



Western blot analysis of lysates from 293 cells, using KSR2 Antibody. The lane on the right is blocked with the synthesized peptide.



Immunohistochemical analysis of paraffin-embedded human tonsil. 1, Tris-EDTA,pH9.0 was used for antigen retrieval. 2 Antibody was diluted at 1:200(4° overnight).3,Secondary antibody was diluted at 1:200(room temperature, 45min).