



# MKP-2 Polyclonal Antibody

<b>Catalog No</b>	YP-Ab-14848
<b>Isotype</b>	IgG
<b>Reactivity</b>	Human;Mouse;Rat;Monkey
<b>Applications</b>	WB;IHC;IF;ELISA
<b>Gene Name</b>	DUSP4
<b>Protein Name</b>	Dual specificity protein phosphatase 4
<b>Immunogen</b>	The antiserum was produced against synthesized peptide derived from human DUSP4. AA range:81-130
<b>Specificity</b>	MKP-2 Polyclonal Antibody detects endogenous levels of MKP-2 protein.
<b>Formulation</b>	Liquid in PBS containing 50% glycerol, 0.5% BSA and 0.02% sodium azide.
<b>Source</b>	Polyclonal, Rabbit,IgG
<b>Purification</b>	The antibody was affinity-purified from rabbit antiserum by affinity-chromatography using epitope-specific immunogen.
<b>Dilution</b>	WB: 1/500 - 1/2000. IHC: 1/100 - 1/300. ELISA: 1/20000.. IF 1:50-200
<b>Concentration</b>	1 mg/ml
<b>Purity</b>	≥90%
<b>Storage Stability</b>	-20°C/1 year
<b>Synonyms</b>	DUSP4; MKP2; VH2; Dual specificity protein phosphatase 4; Dual specificity protein phosphatase hVH2; Mitogen-activated protein kinase phosphatase 2; MAP kinase phosphatase 2; MKP-2
<b>Observed Band</b>	44kD
<b>Cell Pathway</b>	Nucleus .
<b>Tissue Specificity</b>	Skin,Uterus,
<b>Function</b>	catalytic activity:A phosphoprotein + H(2)O = a protein + phosphate.,catalytic activity:Protein tyrosine phosphate + H(2)O = protein tyrosine + phosphate.,function:Regulates mitogenic signal transduction by dephosphorylating both Thr and Tyr residues on MAP kinases ERK1 and ERK2.,similarity:Belongs to the protein-tyrosine phosphatase family. Non-receptor class dual specificity subfamily.,similarity:Contains 1 rhodanese domain.,similarity:Contains 1 tyrosine-protein phosphatase domain.,
<b>Background</b>	The protein encoded by this gene is a member of the dual specificity protein phosphatase subfamily. These phosphatases inactivate their target kinases by dephosphorylating both the phosphoserine/threonine and phosphotyrosine residues. They negatively regulate members of the mitogen-activated protein (MAP) kinase superfamily (MAPK/ERK, SAPK/JNK, p38), which are associated



with cellular proliferation and differentiation. Different members of the family of dual specificity phosphatases show distinct substrate specificities for various MAP kinases, different tissue distribution and subcellular localization, and different modes of inducibility of their expression by extracellular stimuli. This gene product inactivates ERK1, ERK2 and JNK, is expressed in a variety of tissues, and is localized in the nucleus. Two alternatively spliced transcript variants, encoding distinct isoforms, have been obser

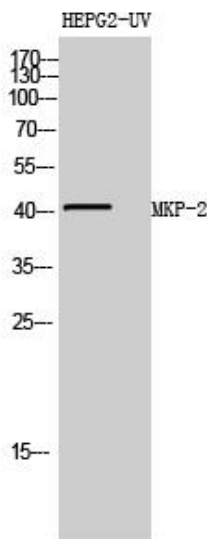
**matters needing attention**

Avoid repeated freezing and thawing!

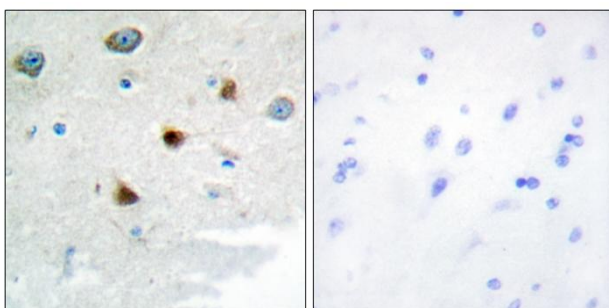
**Usage suggestions**

This product can be used in immunological reaction related experiments. For more information, please consult technical personnel.

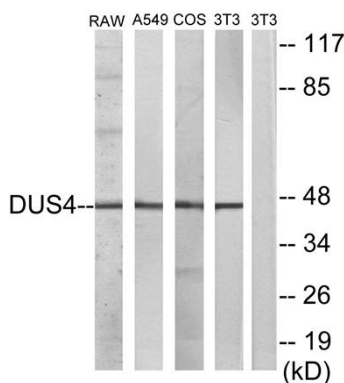
**Products Images**



Western Blot analysis of HEPG2-UV cells using MKP-2 Polyclonal Antibody diluted at 1:1000 cells nucleus extracted by Minute TM Cytoplasmic and Nuclear Fractionation kit (SC-003, Inventbiotech, MN, USA).



Immunohistochemistry analysis of paraffin-embedded human brain tissue, using DUSP4 Antibody. The picture on the right is blocked with the synthesized peptide.



Western blot analysis of lysates from RAW264.7, A549, COS7, and NIH/3T3 cells, using DUSP4 Antibody. The lane on the right is blocked with the synthesized peptide.