



# PFK-2 liv Polyclonal Antibody

<b>Catalog No</b>	YP-Ab-14904
<b>Isotype</b>	IgG
<b>Reactivity</b>	Human;Mouse;Rat
<b>Applications</b>	WB;IHC;IF;ELISA
<b>Gene Name</b>	PFKFB1
<b>Protein Name</b>	6-phosphofructo-2-kinase/fructose-2,6-bisphosphatase 1
<b>Immunogen</b>	The antiserum was produced against synthesized peptide derived from human PFKFB1. AA range:406-455
<b>Specificity</b>	PFK-2 liv Polyclonal Antibody detects endogenous levels of PFK-2 liv protein.
<b>Formulation</b>	Liquid in PBS containing 50% glycerol, 0.5% BSA and 0.02% sodium azide.
<b>Source</b>	Polyclonal, Rabbit,IgG
<b>Purification</b>	The antibody was affinity-purified from rabbit antiserum by affinity-chromatography using epitope-specific immunogen.
<b>Dilution</b>	WB: 1/500 - 1/2000. IHC: 1/100 - 1/300. ELISA: 1/5000.. IF 1:50-200
<b>Concentration</b>	1 mg/ml
<b>Purity</b>	≥90%
<b>Storage Stability</b>	-20°C/1 year
<b>Synonyms</b>	PFKFB1; F6PK; PFRX; 6-phosphofructo-2-kinase/fructose-2; 6-bisphosphatase 1; 6PF-2-K/Fru-2,6-P2ase 1; PFK/FBPase 1; 6PF-2-K/Fru-2,6-P2ase liver isozyme
<b>Observed Band</b>	58kD
<b>Cell Pathway</b>	cytosol,6-phosphofructo-2-kinase/fructose-2,6-biphosphatase complex,
<b>Tissue Specificity</b>	Liver.
<b>Function</b>	catalytic activity:ATP + D-fructose 6-phosphate = ADP + beta-D-fructose 2,6-bisphosphate.,catalytic activity:Beta-D-fructose 2,6-bisphosphate + H(2)O = D-fructose 6-phosphate + phosphate.,enzyme regulation:Phosphorylation results in inhibition of the kinase activity.,function:Synthesis and degradation of fructose 2,6-bisphosphate.,similarity:In the C-terminal section; belongs to the phosphoglycerate mutase family.,subunit:Homodimer.,tissue specificity:Liver.,
<b>Background</b>	This gene encodes a member of the family of bifunctional 6-phosphofructo-2-kinase:fructose-2,6-biphosphatase enzymes. The enzyme forms a homodimer that catalyzes both the synthesis and degradation of fructose-2,6-biphosphate using independent catalytic domains. Fructose-2,6-biphosphate is an activator of the glycolysis pathway and an inhibitor of the gluconeogenesis pathway. Consequently, regulating



fructose-2,6-biphosphate levels through the activity of this enzyme is thought to regulate glucose homeostasis. Multiple alternatively spliced transcript variants have been found for this gene. [provided by RefSeq, Nov 2012],

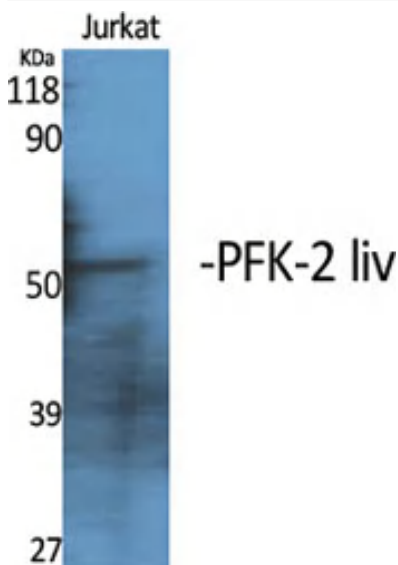
**matters needing attention**

Avoid repeated freezing and thawing!

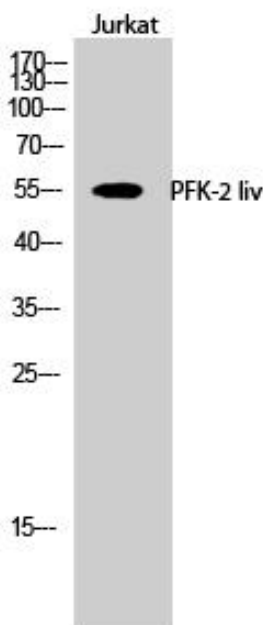
**Usage suggestions**

This product can be used in immunological reaction related experiments. For more information, please consult technical personnel.

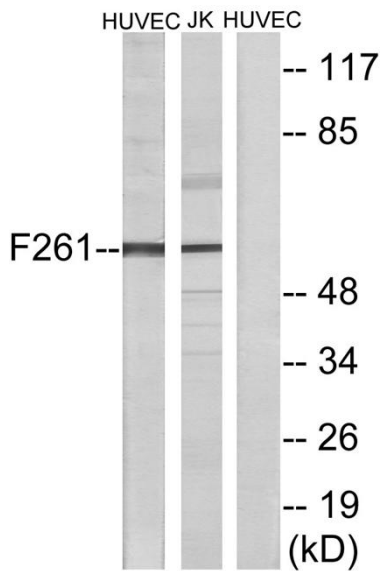
**Products Images**



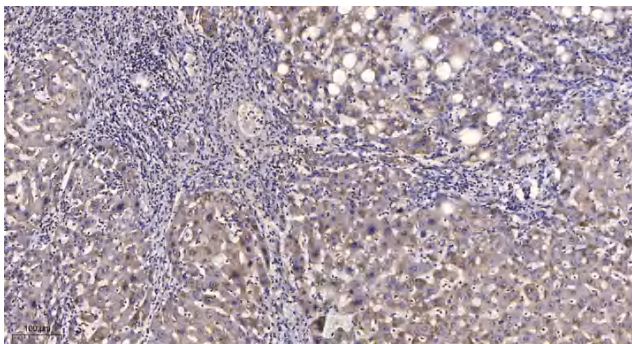
Western Blot analysis of various cells using PFK-2 liv Polyclonal Antibody



Western Blot analysis of Jurkat cells using PFK-2 liv Polyclonal Antibody



Western blot analysis of lysates from HUVEC cells and Jurkat cells, using PFKFB1 Antibody. The lane on the right is blocked with the synthesized peptide.



Immunohistochemical analysis of paraffin-embedded human liver cancer. 1, Antibody was diluted at 1:200(4° overnight). 2, Tris-EDTA, pH9.0 was used for antigen retrieval. 3, Secondary antibody was diluted at 1:200(room temperature, 45min).