

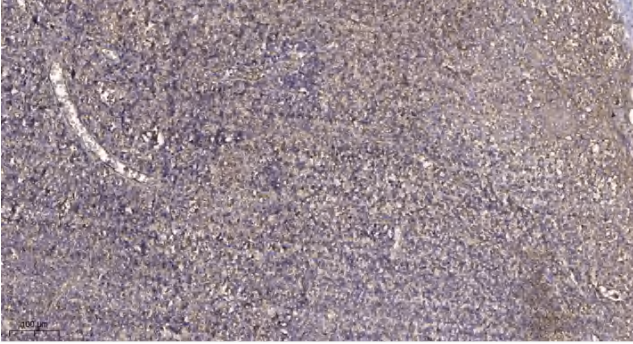


# PPP1R2P3 Polyclonal Antibody

<b>Catalog No</b>	YP-Ab-14955
<b>Isotype</b>	IgG
<b>Reactivity</b>	Human;Rat;Mouse;
<b>Applications</b>	IHC;IF;ELISA
<b>Gene Name</b>	PPP1R2P3
<b>Protein Name</b>	Putative protein phosphatase inhibitor 2-like protein 3
<b>Immunogen</b>	Synthesized peptide derived from PPP1R2P3 . at AA range: 40-120
<b>Specificity</b>	PPP1R2P3 Polyclonal Antibody detects endogenous levels of PPP1R2P3 protein.
<b>Formulation</b>	Liquid in PBS containing 50% glycerol, 0.5% BSA and 0.02% sodium azide.
<b>Source</b>	Polyclonal, Rabbit,IgG
<b>Purification</b>	The antibody was affinity-purified from rabbit antiserum by affinity-chromatography using epitope-specific immunogen.
<b>Dilution</b>	IHC: 1/100 - 1/300. ELISA: 1/40000.. IF 1:50-200
<b>Concentration</b>	1 mg/ml
<b>Purity</b>	≥90%
<b>Storage Stability</b>	-20°C/1 year
<b>Synonyms</b>	PPP1R2P3; Putative protein phosphatase inhibitor 2-like protein 3; Protein phosphatase 1; regulatory subunit 2 pseudogene 3
<b>Observed Band</b>	
<b>Cell Pathway</b>	protein phosphatase type 1 complex,
<b>Tissue Specificity</b>	Only detected in spermatozoa, both heads and tails.
<b>Function</b>	caution:Could be the product of a pseudogene.,function:Inhibitor of protein-phosphatase 1.,similarity:Belongs to the protein phosphatase inhibitor 2 family.,
<b>Background</b>	caution:Could be the product of a pseudogene.,function:Inhibitor of protein-phosphatase 1.,similarity:Belongs to the protein phosphatase inhibitor 2 family.,
<b>matters needing attention</b>	Avoid repeated freezing and thawing!
<b>Usage suggestions</b>	This product can be used in immunological reaction related experiments. For more information, please consult technical personnel.



## Products Images



Immunohistochemical analysis of paraffin-embedded human tonsil. 1, Antibody was diluted at 1:200(4° overnight). 2, Tris-EDTA,pH9.0 was used for antigen retrieval. 3,Secondary antibody was diluted at 1:200(room temperature, 30min).