



RAGE Polyclonal Antibody

Catalog No	YP-Ab-14974
Isotype	IgG
Reactivity	Human;Rat;Mouse;
Applications	WB;IHC;IF;ELISA
Gene Name	MOK
Protein Name	MAPK/MAK/MRK overlapping kinase
Immunogen	The antiserum was produced against synthesized peptide derived from human MOK. AA range:261-310
Specificity	RAGE Polyclonal Antibody detects endogenous levels of RAGE protein.
Formulation	Liquid in PBS containing 50% glycerol, 0.5% BSA and 0.02% sodium azide.
Source	Polyclonal, Rabbit,IgG
Purification	The antibody was affinity-purified from rabbit antiserum by affinity-chromatography using epitope-specific immunogen.
Dilution	Western Blot: 1/500 - 1/2000. Immunohistochemistry: 1/100 - 1/300. Immunofluorescence: 1/200 - 1/1000. ELISA: 1/5000. Not yet tested in other applications.
Concentration	1 mg/ml
Purity	≥90%
Storage Stability	-20°C/1 year
Synonyms	MOK; RAGE; RAGE1; MAPK/MAK/MRK overlapping kinase; MOK protein kinase; Renal tumor antigen 1; RAGE-1
Observed Band	48kD
Cell Pathway	Cytoplasm . Cell projection, cilium . Nucleus .
Tissue Specificity	Expressed in heart, brain, lung, kidney, and pancreas, and at very low levels in placenta, liver and skeletal muscle. Detected in retina.
Function	catalytic activity:ATP + a protein = ADP + a phosphoprotein.,enzyme regulation:Phosphorylation appears to increase the enzymatic activity.,function:Able to phosphorylate several exogenous substrates and to undergo autophosphorylation.,PTM:Autophosphorylated.,similarity:Belongs to the protein kinase superfamily. CMGC Ser/Thr protein kinase family. CDC2/CDKX subfamily.,similarity:Contains 1 protein kinase domain.,tissue specificity:Expressed in heart, brain, lung, kidney, and pancreas, and at very low levels in placenta, liver and skeletal muscle. Detected in retina.,
Background	MOK protein kinase(MOK) Homo sapiens This gene belongs to the MAP kinase superfamily. The gene was found to be regulated by caudal type transcription factor 2 (Cdx2) protein. The encoded protein, which is localized to epithelial cells in the intestinal crypt, may play a role in growth arrest and



differentiation of cells of upper crypt and lower villus regions. Multiple alternatively spliced transcript variants encoding different isoforms have been observed for this gene. [provided by RefSeq, Dec 2012],

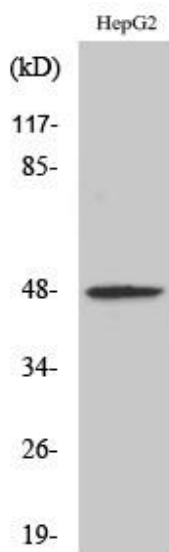
matters needing attention

Avoid repeated freezing and thawing!

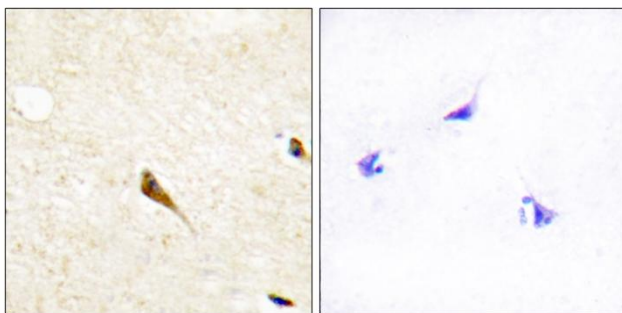
Usage suggestions

This product can be used in immunological reaction related experiments. For more information, please consult technical personnel.

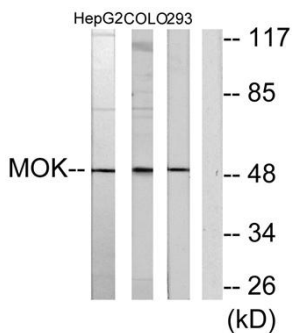
Products Images



Western Blot analysis of various cells using RAGE Polyclonal Antibody



Immunohistochemistry analysis of paraffin-embedded human brain tissue, using MOK Antibody. The picture on the right is blocked with the synthesized peptide.



Western blot analysis of lysates from HepG2, COLO205, and 293 cells, using MOK Antibody. The lane on the right is blocked with the synthesized peptide.