

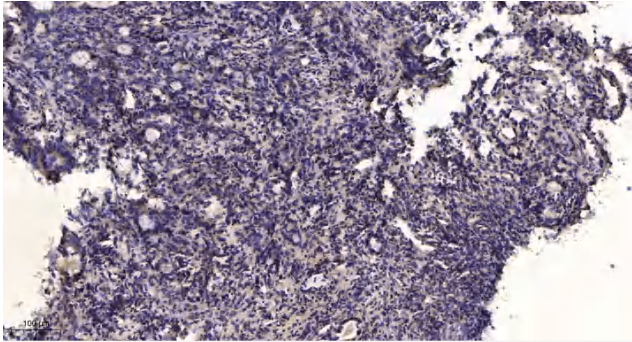


# RIOK1 Polyclonal Antibody

<b>Catalog No</b>	YP-Ab-14978
<b>Isotype</b>	IgG
<b>Reactivity</b>	Human;Mouse;Rat
<b>Applications</b>	IHC;IF;ELISA
<b>Gene Name</b>	RIOK1
<b>Protein Name</b>	Serine/threonine-protein kinase RIO1
<b>Immunogen</b>	Synthesized peptide derived from the Internal region of human RIOK1.
<b>Specificity</b>	RIOK1 Polyclonal Antibody detects endogenous levels of RIOK1 protein.
<b>Formulation</b>	Liquid in PBS containing 50% glycerol, 0.5% BSA and 0.02% sodium azide.
<b>Source</b>	Polyclonal, Rabbit,IgG
<b>Purification</b>	The antibody was affinity-purified from rabbit antiserum by affinity-chromatography using epitope-specific immunogen.
<b>Dilution</b>	IHC: 1/100 - 1/300. ELISA: 1/40000.. IF 1:50-200
<b>Concentration</b>	1 mg/ml
<b>Purity</b>	≥90%
<b>Storage Stability</b>	-20°C/1 year
<b>Synonyms</b>	RIOK1; Serine/threonine-protein kinase RIO1; RIO kinase 1
<b>Observed Band</b>	
<b>Cell Pathway</b>	Cytoplasm, cytosol .
<b>Tissue Specificity</b>	Adrenal gland,Brain,Cervix carcinoma,Colon adenocarcinoma,Lung,Lung carcinoma,
<b>Function</b>	catalytic activity:ATP + a protein = ADP + a phosphoprotein.,similarity:Belongs to the protein kinase superfamily. RIO-type Ser/Thr kinase family.,similarity:Contains 1 protein kinase domain.,
<b>Background</b>	This gene includes two alternatively spliced transcript variants, which encode different isoforms. The function of this gene has not been determined. [provided by RefSeq, Jul 2008],
<b>matters needing attention</b>	Avoid repeated freezing and thawing!
<b>Usage suggestions</b>	This product can be used in immunological reaction related experiments. For more information, please consult technical personnel.



## Products Images



Immunohistochemical analysis of paraffin-embedded human Gastric adenocarcinoma. 1, Antibody was diluted at 1:200(4° overnight). 2, Tris-EDTA,pH9.0 was used for antigen retrieval. 3,Secondary antibody was diluted at 1:200(room temperature, 45min).