



# Snk Polyclonal Antibody

<b>Catalog No</b>	YP-Ab-14998
<b>Isotype</b>	IgG
<b>Reactivity</b>	Human;Mouse;Rat
<b>Applications</b>	WB;IF;ELISA;IHC
<b>Gene Name</b>	PLK2
<b>Protein Name</b>	Serine/threonine-protein kinase PLK2
<b>Immunogen</b>	The antiserum was produced against synthesized peptide derived from human PLK2. AA range:291-340
<b>Specificity</b>	Snk Polyclonal Antibody detects endogenous levels of Snk protein.
<b>Formulation</b>	Liquid in PBS containing 50% glycerol, 0.5% BSA and 0.02% sodium azide.
<b>Source</b>	Polyclonal, Rabbit,IgG
<b>Purification</b>	The antibody was affinity-purified from rabbit antiserum by affinity-chromatography using epitope-specific immunogen.
<b>Dilution</b>	WB 1:500-2000; IF/ICC 1:50-200;ELISA 1:2000-20000;IHC-p 1:50-200
<b>Concentration</b>	1 mg/ml
<b>Purity</b>	≥90%
<b>Storage Stability</b>	-20°C/1 year
<b>Synonyms</b>	PLK2; SNK; Serine/threonine-protein kinase PLK2; Polo-like kinase 2; PLK-2; hPlk2; Serine/threonine-protein kinase SNK; hSNK; Serum-inducible kinase
<b>Observed Band</b>	78kD
<b>Cell Pathway</b>	Cytoplasm, cytoskeleton, microtubule organizing center, centrosome, centriole . Cell projection, dendrite . Localizes to centrosomes during early G1 phase where it only associates to the mother centriole and then distributes equally to both mother and daughter centrioles at the onset of S phase.
<b>Tissue Specificity</b>	Expressed at higher level in the fetal lung, kidney, spleen and heart.
<b>Function</b>	catalytic activity:ATP + a protein = ADP + a phosphoprotein.,function:May play a role in the division of at least some cell types, such as fibroblasts, and could function in embryogenesis, wound healing or neoplasia.,similarity:Belongs to the protein kinase superfamily.,similarity:Belongs to the protein kinase superfamily. Ser/Thr protein kinase family. CDC5/Polo subfamily.,similarity:Contains 1 protein kinase domain.,similarity:Contains 2 POLO box domains.,
<b>Background</b>	The protein encoded by this gene is a member of the polo family of serine/threonine protein kinases that have a role in normal cell division. This gene is most abundantly expressed in testis, spleen and fetal tissues, and its expression is inducible by serum, suggesting that it may also play an important role in cells undergoing rapid cell division. Alternatively spliced transcript variants



encoding different isoforms have been found for this gene. [provided by RefSeq, Nov 2011],

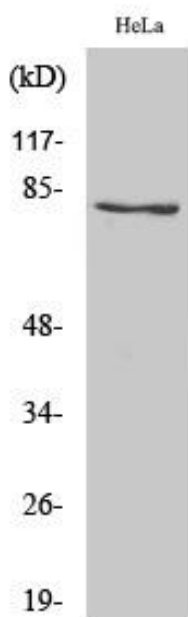
**matters needing attention**

Avoid repeated freezing and thawing!

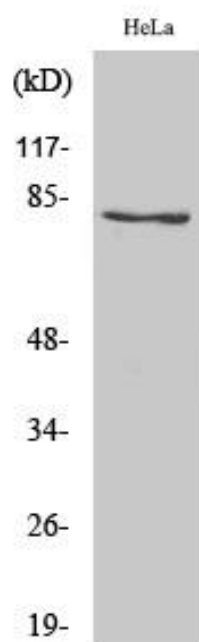
**Usage suggestions**

This product can be used in immunological reaction related experiments. For more information, please consult technical personnel.

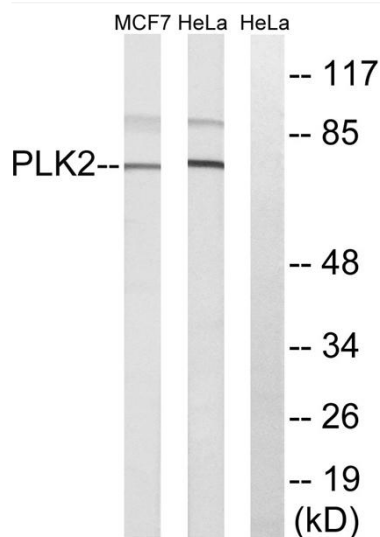
**Products Images**



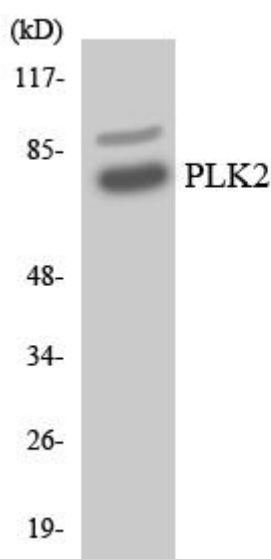
Western Blot analysis of various cells using Snk Polyclonal Antibody



Western Blot analysis of MCF7 cells using Snk Polyclonal Antibody



Western blot analysis of lysates from HeLa and MCF-7 cells, using PLK2 Antibody. The lane on the right is blocked with the synthesized peptide.



Western blot analysis of the lysates from HeLa cells using PLK2 antibody.



Immunohistochemical analysis of paraffin-embedded human tonsil. 1, Antibody was diluted at 1:200(4° overnight). 2, Tris-EDTA,pH9.0 was used for antigen retrieval. 3,Secondary antibody was diluted at 1:200(room temperature, 45min).