

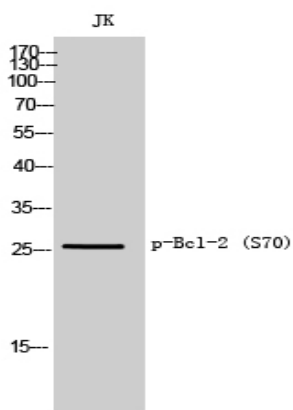


# Bcl-2 (phospho Ser70) Polyclonal Antibody

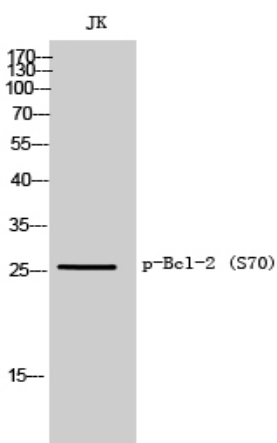
<b>Catalog No</b>	YP-Ab-00183
<b>Isotype</b>	IgG
<b>Reactivity</b>	Mouse;Rat
<b>Applications</b>	WB;ELISA
<b>Gene Name</b>	BCL2
<b>Protein Name</b>	Apoptosis regulator Bcl-2
<b>Immunogen</b>	The antiserum was produced against synthesized peptide derived from human BCL2 around the phosphorylation site of Ser70. AA range:36-85
<b>Specificity</b>	Phospho-Bcl-2 (S70) Polyclonal Antibody detects endogenous levels of Bcl-2 protein only when phosphorylated at S70.
<b>Formulation</b>	Liquid in PBS containing 50% glycerol, 0.5% BSA and 0.02% sodium azide.
<b>Source</b>	Polyclonal, Rabbit,IgG
<b>Purification</b>	The antibody was affinity-purified from rabbit antiserum by affinity-chromatography using epitope-specific immunogen.
<b>Dilution</b>	Western Blot: 1/500 - 1/2000. ELISA: 1/40000. Not yet tested in other applications.
<b>Concentration</b>	1 mg/ml
<b>Purity</b>	≥90%
<b>Storage Stability</b>	-20°C/1 year
<b>Synonyms</b>	BCL2; Apoptosis regulator Bcl-2
<b>Observed Band</b>	26kD
<b>Cell Pathway</b>	
<b>Tissue Specificity</b>	
<b>Function</b>	
<b>Background</b>	BCL2 encodes an integral outer mitochondrial membrane protein that blocks the apoptotic death of some cells such as lymphocytes. Constitutive expression of BCL2, such as in the case of translocation of BCL2 to Ig heavy chain locus, is thought to be the cause of follicular lymphoma. Alternative splicing results in multiple transcript variants.
<b>matters needing attention</b>	Avoid repeated freezing and thawing!
<b>Usage suggestions</b>	This product can be used in immunological reaction related experiments. For more information, please consult technical personnel.



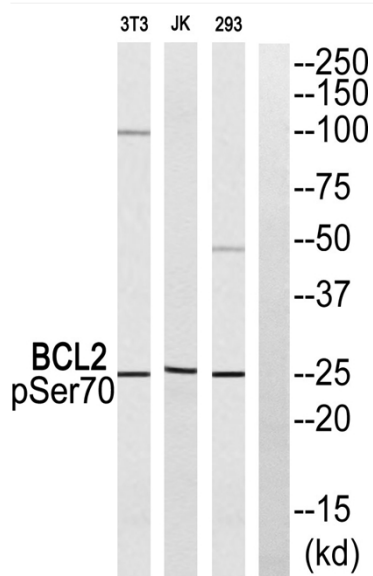
## Products Images



Western Blot analysis of JK cells using Phospho-Bcl-2 (S70) Polyclonal Antibody



Western Blot analysis of Jurkat cells using Phospho-Bcl-2 (S70) Polyclonal Antibody



Western blot analysis of BCL2 (Phospho-Ser70) Antibody. The lane on the right is blocked with the BCL2 (Phospho-Ser70) peptide.