



Tuberin (phospho Ser939) Polyclonal Antibody

Catalog No	YP-Ab-00197
Isotype	IgG
Reactivity	Human;Mouse;Rat
Applications	WB;IHC;IF;ELISA
Gene Name	TSC2
Protein Name	Tuberin
Immunogen	The antiserum was produced against synthesized peptide derived from human Tuberin/TSC2 around the phosphorylation site of Ser939. AA range:905-954
Specificity	Phospho-Tuberin (S939) Polyclonal Antibody detects endogenous levels of Tuberin protein only when phosphorylated at S939.
Formulation	Liquid in PBS containing 50% glycerol, 0.5% BSA and 0.02% sodium azide.
Source	Polyclonal, Rabbit,IgG
Purification	The antibody was affinity-purified from rabbit antiserum by affinity-chromatography using epitope-specific immunogen.
Dilution	WB: 1/500 - 1/2000. IHC: 1/100 - 1/300. ELISA: 1/10000.. IF 1:50-200
Concentration	1 mg/ml
Purity	≥90%
Storage Stability	-20°C/1 year
Synonyms	TSC2; TSC4; Tuberin; Tuberous sclerosis 2 protein
Observed Band	200kD
Cell Pathway	Cytoplasm. Membrane; Peripheral membrane protein. At steady state found in association with membranes.
Tissue Specificity	Liver, brain, heart, lymphocytes, fibroblasts, biliary epithelium, pancreas, skeletal muscle, kidney, lung and placenta.
Function	alternative products:Additional isoforms seem to exist. Experimental confirmation may be lacking for some isoforms,disease:Defects in TSC2 are a cause of lymphangioleiomyomatosis (LAM) [MIM:606690]. LAM is a progressive and often fatal lung disease characterized by a diffuse proliferation of abnormal smooth muscle cells in the lungs. It affects almost exclusively young women and can occur as an isolated disorder or in association with tuberous sclerosis complex.,disease:Defects in TSC2 are the cause of tuberous sclerosis complex (TSC) [MIM:191100]. The molecular basis of TSC is a functional impairment of the tuberin-hamartin complex. TSC is an autosomal dominant multi-system disorder that affects especially the brain, kidneys, heart, and skin. TSC is characterized by hamartomas (benign overgrowths predominantly of a cell or tissue type that occurs normally in the organ) and hamartias (de
Background	Mutations in this gene lead to tuberous sclerosis complex. Its gene product is believed to be a tumor suppressor and is able to stimulate specific GTPases. The



protein associates with hamartin in a cytosolic complex, possibly acting as a chaperone for hamartin. Alternative splicing results in multiple transcript variants encoding different isoforms. [provided by RefSeq, Jul 2008],

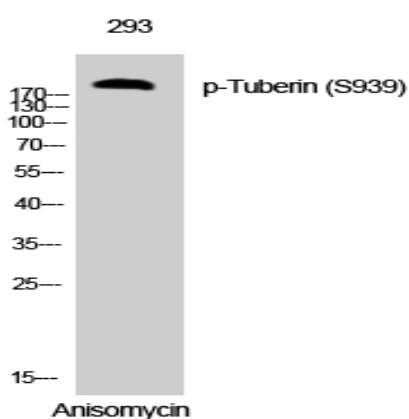
matters needing attention

Avoid repeated freezing and thawing!

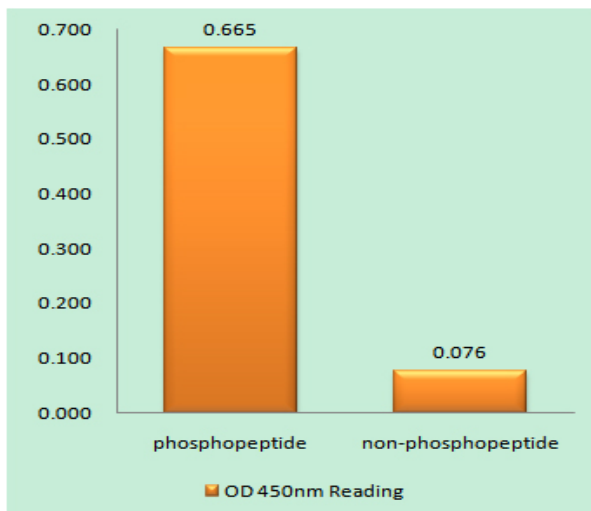
Usage suggestions

This product can be used in immunological reaction related experiments. For more information, please consult technical personnel.

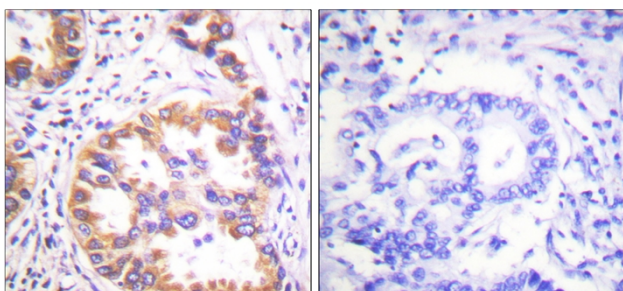
Products Images



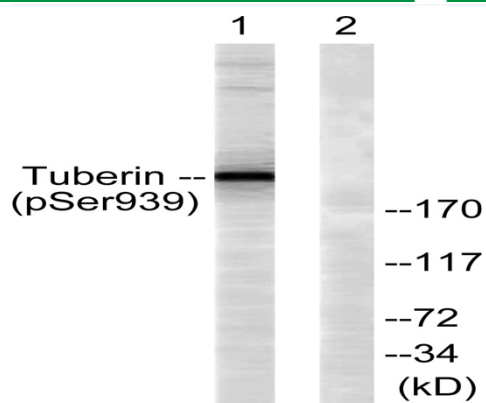
Western Blot analysis of 293 cells using Phospho-Tuberin (S939) Polyclonal Antibody



Enzyme-Linked Immunosorbent Assay (Phospho-ELISA) for Immunogen Phosphopeptide (Phospho-left) and Non-Phosphopeptide (Phospho-right), using Tuberin/TSC2 (Phospho-Ser939) Antibody



Immunohistochemistry analysis of paraffin-embedded human lung carcinoma, using Tuberin/TSC2 (Phospho-Ser939) Antibody. The picture on the right is blocked with the phospho peptide.



Western blot analysis of lysates from 293 cells treated with Anisomycin 25ug/ml 30', using Tuberin/TSC2 (Phospho-Ser939) Antibody. The lane on the right is blocked with the phospho peptide.