



NF2 (phospho Ser10) Polyclonal Antibody

Catalog No	YP-Ab-00209
Isotype	IgG
Reactivity	Human;Mouse;Rat
Applications	WB;IHC;IF;ELISA
Gene Name	NF2
Protein Name	Merlin
Immunogen	The antiserum was produced against synthesized peptide derived from human Merlin around the phosphorylation site of Ser10. AA range:1-50
Specificity	Phospho-NF2 (S10) Polyclonal Antibody detects endogenous levels of NF2 protein only when phosphorylated at S10.
Formulation	Liquid in PBS containing 50% glycerol, 0.5% BSA and 0.02% sodium azide.
Source	Polyclonal, Rabbit,IgG
Purification	The antibody was affinity-purified from rabbit antiserum by affinity-chromatography using epitope-specific immunogen.
Dilution	WB: 1/500 - 1/2000. IHC: 1/100 - 1/300. ELISA: 1/5000.. IF 1:50-200
Concentration	1 mg/ml
Purity	≥90%
Storage Stability	-20°C/1 year
Synonyms	NF2; SCH; Merlin; Moesin-ezrin-radixin-like protein; Neurofibromin-2; Schwannomerlin; Schwannomin
Observed Band	65kD
Cell Pathway	[Isoform 1]: Cell projection, filopodium membrane; Peripheral membrane protein; Cytoplasmic side. Cell projection, ruffle membrane; Peripheral membrane protein; Cytoplasmic side. Nucleus. In a fibroblastic cell line, isoform 1 is found homogeneously distributed over the entire cell, with a particularly strong staining in ruffling membranes and filopodia. Colocalizes with MPP1 in non-myelin-forming Schwann cells. Binds with DCAF1 in the nucleus. The intramolecular association of the FERM domain with the C-terminal tail promotes nuclear accumulation. The unphosphorylated form accumulates predominantly in the nucleus while the phosphorylated form is largely confined to the non-nuclear fractions.; [Isoform 7]: Cytoplasm, perinuclear region. Cytoplasmic granule. Observed in cytoplasmic granules
Tissue Specificity	Widely expressed. Isoform 1 and isoform 3 are predominant. Isoform 4, isoform 5 and isoform 6 are expressed moderately. Isoform 8 is found at low frequency. Isoform 7, isoform 9 and isoform 10 are not expressed in adult tissues, with the exception of adult retina expressing isoform 10. Isoform 9 is faintly expressed in fetal brain, heart, lung, skeletal muscle and spleen. Fetal thymus expresses isoforms 1, 7, 9 and 10 at similar levels.

**Function**

disease:Defects in NF2 are a cause of schwannomatosis [MIM:162091]; also called congenital cutaneous neurilemmomatosis. Schwannomas are benign tumors of the peripheral nerve sheath that usually occur singly in otherwise normal individuals. Multiple schwannomas in the same individual suggest an underlying tumor-predisposition syndrome. The most common such syndrome is NF2. The hallmark of NF2 is the development of bilateral vestibular-nerve schwannomas; but two-thirds or more of all NF2-affected individuals develop schwannomas in other locations, and dermal schwannomas may precede vestibular tumors in NF2-affected children. There have been several reports of individuals with multiple schwannomas who do not show evidence of vestibular schwannoma. Clinical report suggests that schwannomatosis is a clinical entity distinct from other forms of neurofibromatosis.,disease:Defects in NF2 are the

Background

This gene encodes a protein that is similar to some members of the ERM (ezrin, radixin, moesin) family of proteins that are thought to link cytoskeletal components with proteins in the cell membrane. This gene product has been shown to interact with cell-surface proteins, proteins involved in cytoskeletal dynamics and proteins involved in regulating ion transport. This gene is expressed at high levels during embryonic development; in adults, significant expression is found in Schwann cells, meningeal cells, lens and nerve. Mutations in this gene are associated with neurofibromatosis type II which is characterized by nervous system and skin tumors and ocular abnormalities. Two predominant isoforms and a number of minor isoforms are produced by alternatively spliced transcripts. [provided by RefSeq, Jul 2008],

matters needing attention

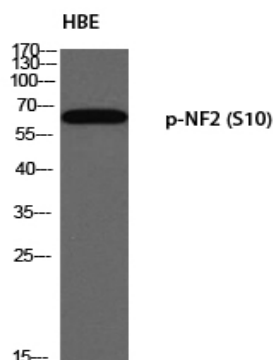
Avoid repeated freezing and thawing!

Usage suggestions

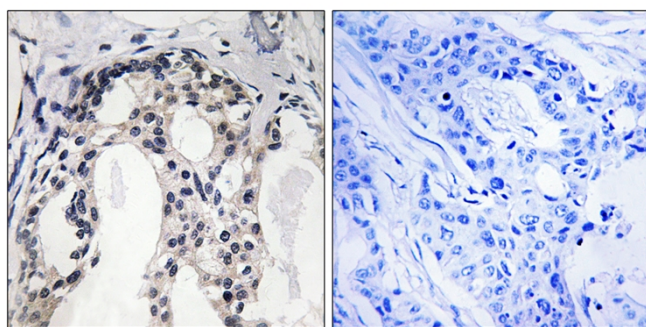
This product can be used in immunological reaction related experiments. For more information, please consult technical personnel.



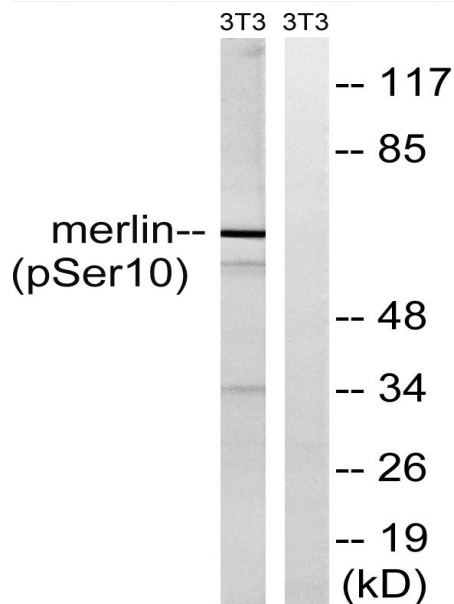
Products Images



Western blot analysis of HBE using p-NF2 (S10) antibody. Antibody was diluted at 1:500



Immunohistochemistry analysis of paraffin-embedded human breast carcinoma, using Merlin (Phospho-Ser10) Antibody. The picture on the right is blocked with the phospho peptide.



Western blot analysis of lysates from NIH/3T3 cells treated with IFN 2500U/ml 30', using Merlin (Phospho-Ser10) Antibody. The lane on the right is blocked with the phospho peptide.