



Actin Polyclonal Antibody

Catalog No	YP-Ab-03076
Isotype	IgG
Reactivity	Human;Mouse;Rat;Fish
Applications	WB;IHC;IF;ELISA
Gene Name	ACTG1
Protein Name	Actin cytoplasmic 2
Immunogen	The antiserum was produced against synthesized peptide derived from human Actin. AA range:326-375
Specificity	Actin Polyclonal Antibody detects endogenous levels of Actin protein.
Formulation	Liquid in PBS containing 50% glycerol, 0.5% BSA and 0.02% sodium azide.
Source	Polyclonal, Rabbit,IgG
Purification	The antibody was affinity-purified from rabbit antiserum by affinity-chromatography using epitope-specific immunogen.
Dilution	WB: 1/500 - 1/2000. IHC: 1/100 - 1/300. ELISA: 1/10000.. IF 1:50-200
Concentration	1 mg/ml
Purity	≥90%
Storage Stability	-20°C/1 year
Synonyms	ACTB; Actin; cytoplasmic 1; Beta-actin; POTEKP; ACTBL3; FKSG30; Putative beta-actin-like protein 3; Kappa-actin; POTE ankyrin domain family member K; ACTG1; ACTB; ACTG; Actin, cytoplasmic 2; Gamma-actin
Observed Band	45kD
Cell Pathway	Cytoplasm, cytoskeleton . Nucleus . Localized in cytoplasmic mRNP granules containing untranslated mRNAs. .
Tissue Specificity	B-cell lymphoma,Brain,Cajal-Retzius cell,Eye,Fetal brain cortex,Foreskin,Hepatocellular car
Function	disease:Defects in ACTB are a cause of dystonia juvenile-onset (DYTJ) [MIM:607371]. DYTJ is a form of dystonia with juvenile onset. Dystonia is defined by the presence of sustained involuntary muscle contraction, often leading to abnormal postures. DYTJ patients manifest progressive, generalized, dopa-unresponsive dystonia, developmental malformations and sensory hearing loss.,function:Actins are highly conserved proteins that are involved in various types of cell motility and are ubiquitously expressed in all eukaryotic cells.,miscellaneous:In vertebrates 3 main groups of actin isoforms, alpha, beta and gamma have been identified. The alpha actins are found in muscle tissues and are a major constituent of the contractile apparatus. The beta and gamma actins coexist in most cell types as components of the cytoskeleton and as mediators of internal cell motility.,similarity:Belongs to the

**Background**

This gene encodes one of six different actin proteins. Actins are highly conserved proteins that are involved in cell motility, structure, and integrity. This actin is a major constituent of the contractile apparatus and one of the two nonmuscle cytoskeletal actins. [provided by RefSeq, Jul 2008],

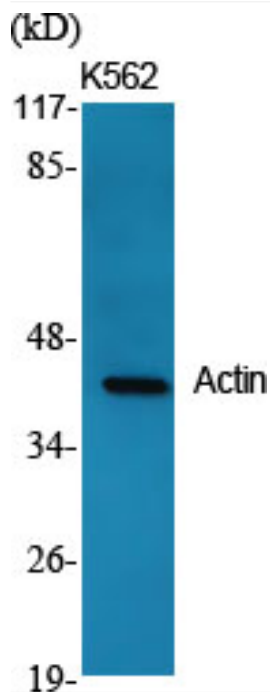
matters needing attention

Avoid repeated freezing and thawing!

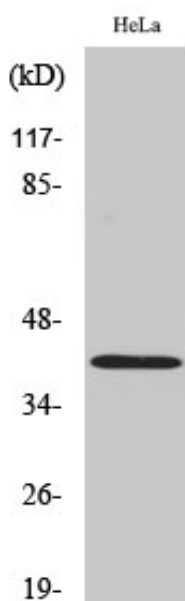
Usage suggestions

This product can be used in immunological reaction related experiments. For more information, please consult technical personnel.

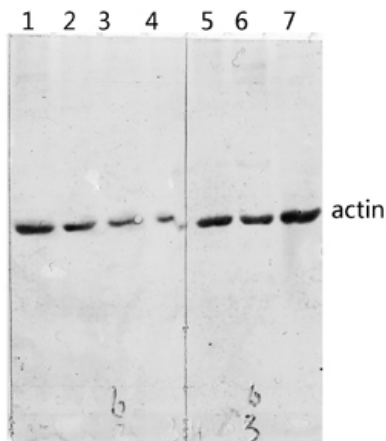
Products Images



Western Blot analysis of various cells using Actin Polyclonal Antibody diluted at 1:2000

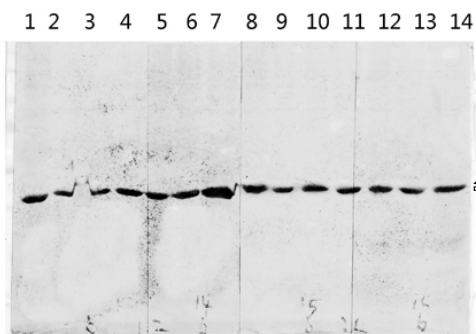


Western Blot analysis of HeLa cells using Actin Polyclonal Antibody diluted at 1:2000



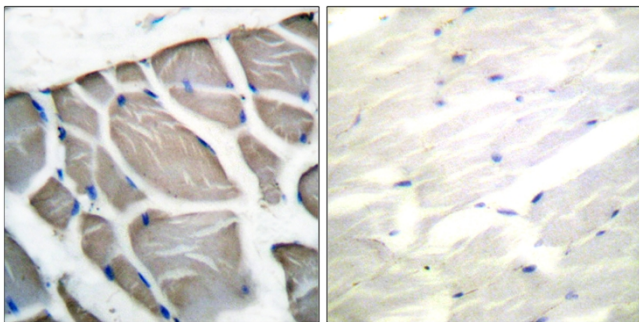
- 1 MCF-7
- 2 U2OS
- 3 HeLa UV
- 4 MCF-7 UV
- 5 3T3 UV
- 6 KB UV
- 7 U2OS UV

Western blot analysis of various lysis using Actin Polyclonal Antibody diluted at 1:2000. Secondary antibody(catalog#:RS0002) was diluted at 1:20000



- 1 mouse-lung
- 2 mouse-brain
- 3 mouse-spleen
- 4 mouse-kidney
- 5 mouse-heart
- 6 293T
- 7 HeLa
- 8 K562
- 9 KB
- 10 SH-SY5Y
- 11 mouse-liver
- 12 3T3
- 13 A549
- 14 VEC

Western blot analysis of various lysis using Actin Polyclonal Antibody diluted at 1:2000. Secondary antibody(catalog#:RS0002) was diluted at 1:20000



Immunohistochemistry analysis of paraffin-embedded human skeletal muscle tissue, using Actin-pan Antibody. The picture on the right is blocked with the synthesized peptide.