



PROF2 Polyclonal Antibody

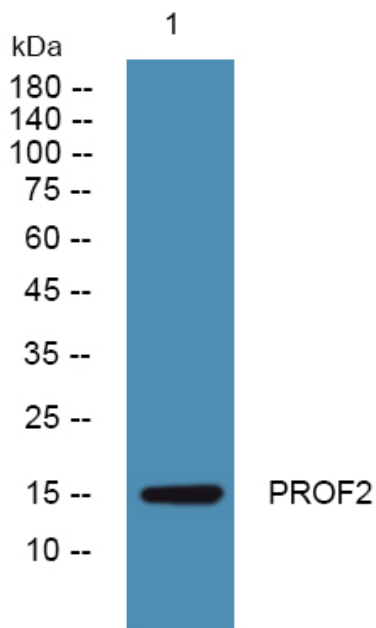
Catalog No	YP-Ab-07696
Isotype	IgG
Reactivity	Human;Mouse;Rat
Applications	WB;ELISA
Gene Name	PFN2
Protein Name	Profilin-2 (Profilin II)
Immunogen	Synthesized peptide derived from part region of human protein
Specificity	PROF2 Polyclonal Antibody detects endogenous levels of protein.
Formulation	Liquid in PBS containing 50% glycerol, and 0.02% sodium azide.
Source	Polyclonal, Rabbit,IgG
Purification	The antibody was affinity-purified from rabbit antiserum by affinity-chromatography using epitope-specific immunogen.
Dilution	WB 1:500-2000 ELISA 1:5000-20000
Concentration	1 mg/ml
Purity	≥90%
Storage Stability	-20°C/1 year
Synonyms	
Observed Band	15kD
Cell Pathway	Cytoplasm, cytoskeleton.
Tissue Specificity	Highly expressed in brain, skeletal muscle and kidney and less strongly in heart, placenta, lung and liver.
Function	function: Binds to actin and affects the structure of the cytoskeleton. At high concentrations, profilin prevents the polymerization of actin, whereas it enhances it at low concentrations. By binding to PIP2, it inhibits the formation of IP3 and DG., similarity: Belongs to the profilin family., subunit: Occurs in many kinds of cells as a complex with monomeric actin in a 1:1 ratio., tissue specificity: Highly expressed in brain, skeletal muscle and kidney and less strongly in heart, placenta, lung and liver.,
Background	The protein encoded by this gene is a ubiquitous actin monomer-binding protein belonging to the profilin family. It is thought to regulate actin polymerization in response to extracellular signals. There are two alternatively spliced transcript variants encoding different isoforms described for this gene. [provided by RefSeq, Jul 2008],
matters needing attention	Avoid repeated freezing and thawing!



Usage suggestions

This product can be used in immunological reaction related experiments. For more information, please consult technical personnel.

Products Images



Western blot analysis of lysates from K562 cells,
primary antibody was diluted at 1:1000, 4° over night