

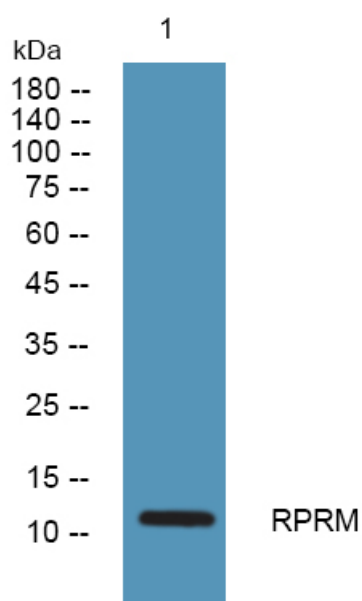


RPRM Polyclonal Antibody

Catalog No	YP-Ab-07758
Isotype	IgG
Reactivity	Human;Mouse;Rat
Applications	WB;ELISA
Gene Name	RPRM
Protein Name	Protein reprimo
Immunogen	Synthesized peptide derived from part region of human protein AA range: 1-50
Specificity	RPRM Polyclonal Antibody detects endogenous levels of protein.
Formulation	Liquid in PBS containing 50% glycerol, and 0.02% sodium azide.
Source	Polyclonal, Rabbit,IgG
Purification	The antibody was affinity-purified from rabbit antiserum by affinity-chromatography using epitope-specific immunogen.
Dilution	WB 1:500-2000 ELISA 1:5000-20000
Concentration	1 mg/ml
Purity	≥90%
Storage Stability	-20°C/1 year
Synonyms	
Observed Band	11kD
Cell Pathway	Cytoplasm . Membrane ; Single-pass membrane protein .
Tissue Specificity	Lung,
Function	function:May be involved in the regulation of p53-dependent G2 arrest of the cell cycle. Seems to induce cell cycle arrest by inhibiting CDC2 activity and nuclear translocation of the CDC2 cyclin B1 complex.,induction:By TP53/p53, following X-ray irradiation.,miscellaneous:'Reprimo' signifies stop/repress.,similarity:Belongs to the reprimo family.,
Background	function:May be involved in the regulation of p53-dependent G2 arrest of the cell cycle. Seems to induce cell cycle arrest by inhibiting CDC2 activity and nuclear translocation of the CDC2 cyclin B1 complex.,induction:By TP53/p53, following X-ray irradiation.,miscellaneous:'Reprimo' signifies stop/repress.,similarity:Belongs to the reprimo family.,
matters needing attention	Avoid repeated freezing and thawing!

Usage suggestions

This product can be used in immunological reaction related experiments. For more information, please consult technical personnel.

Products Images

Western blot analysis of lysates from K562 cells,
primary antibody was diluted at 1:1000, 4° over night