



GON2 Polyclonal Antibody

Catalog No	YP-Ab-07772
Isotype	IgG
Reactivity	Human;Rat;Mouse;
Applications	WB;ELISA
Gene Name	GNRH2
Protein Name	Progonadoliberein-2 (Progonadoliberein II) [Cleaved into: Gonadoliberein-2 (Gonadoliberein II) (Gonadotropin-releasing hormone II) (GnRH II) (Luliberin II) (Luteinizing hormone-releasing hormone II) (LH-R
Immunogen	Synthesized peptide derived from part region of human protein AA range: 1-50
Specificity	GON2 Polyclonal Antibody detects endogenous levels of protein.
Formulation	Liquid in PBS containing 50% glycerol, and 0.02% sodium azide.
Source	Polyclonal, Rabbit,IgG
Purification	The antibody was affinity-purified from rabbit antiserum by affinity-chromatography using epitope-specific immunogen.
Dilution	WB 1:500-2000 ELISA 1:5000-20000
Concentration	1 mg/ml
Purity	≥90%
Storage Stability	-20°C/1 year
Synonyms	
Observed Band	13kD
Cell Pathway	Secreted.
Tissue Specificity	Midbrain; expressed at significantly higher levels outside the brain (up to 30-fold), particularly in the kidney, bone marrow and prostate.
Function	alternative products:Experimental confirmation may be lacking for some isoforms,function:Stimulates the secretion of gonadotropins; it stimulates the secretion of both luteinizing and follicle-stimulating hormones.,similarity:Belongs to the GnRH family.,tissue specificity:Midbrain; expressed at significantly higher levels outside the brain (up to 30-fold), particularly in the kidney, bone marrow and prostate.,
Background	gonadotropin releasing hormone 2(GNRH2) Homo sapiens This gene encodes a secreted peptide hormone and member of the gonadotropin-releasing hormone (GnRH) family of proteins. The encoded protein regulates reproductive function by stimulating the production and release of the gonadotropins follicle-stimulating hormone (FSH) and luteinizing hormone (LH). The encoded protein may inhibit endometrial, ovarian, prostate, and breast cancer cell proliferation. Alternative splicing results in multiple transcript variants. [provided by RefSeq, Jul 2015],

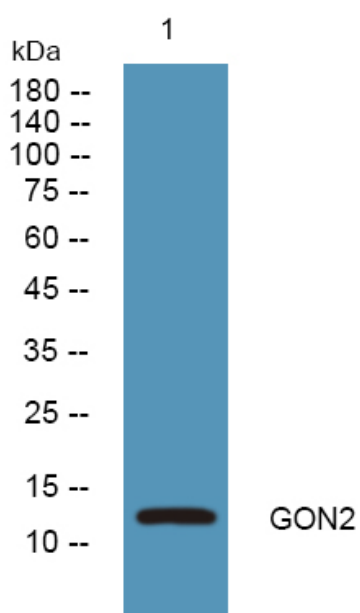
matters needing attention

Avoid repeated freezing and thawing!

Usage suggestions

This product can be used in immunological reaction related experiments. For more information, please consult technical personnel.

Products Images



Western blot analysis of lysates from Jarkat cells, primary antibody was diluted at 1:1000, 4° over night