

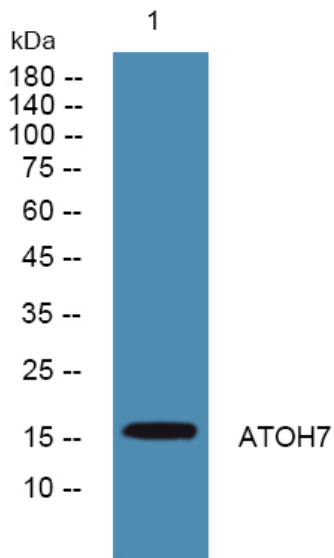


# ATOH7 Polyclonal Antibody

<b>Catalog No</b>	YP-Ab-07815
<b>Isotype</b>	IgG
<b>Reactivity</b>	Human;Mouse
<b>Applications</b>	WB;ELISA
<b>Gene Name</b>	ATOH7 ATH5 BHLHA13
<b>Protein Name</b>	Protein atonal homolog 7 (Class A basic helix-loop-helix protein 13) (bHLHa13) (Helix-loop-helix protein hATH-5) (hATH5)
<b>Immunogen</b>	Synthesized peptide derived from part region of human protein
<b>Specificity</b>	ATOH7 Polyclonal Antibody detects endogenous levels of protein.
<b>Formulation</b>	Liquid in PBS containing 50% glycerol, and 0.02% sodium azide.
<b>Source</b>	Polyclonal, Rabbit,IgG
<b>Purification</b>	The antibody was affinity-purified from rabbit antiserum by affinity-chromatography using epitope-specific immunogen.
<b>Dilution</b>	WB 1:500-2000 ELISA 1:5000-20000
<b>Concentration</b>	1 mg/ml
<b>Purity</b>	≥90%
<b>Storage Stability</b>	-20°C/1 year
<b>Synonyms</b>	
<b>Observed Band</b>	16kD
<b>Cell Pathway</b>	Nucleus . Perikaryon . Cell projection, axon .
<b>Tissue Specificity</b>	Eye,
<b>Function</b>	function:Transcription factor involved in the differentiation of retinal ganglion cells.,similarity:Contains 1 basic helix-loop-helix (bHLH) domain.,
<b>Background</b>	This intronless gene encodes a member of the basic helix-loop-helix family of transcription factors, with similarity to Drosophila atonal gene that controls photoreceptor development. Studies in mice suggest that this gene plays a central role in retinal ganglion cell and optic nerve formation. Mutations in this gene are associated with nonsyndromic congenital retinal nonattachment. [provided by RefSeq, Dec 2011],
<b>matters needing attention</b>	Avoid repeated freezing and thawing!
<b>Usage suggestions</b>	This product can be used in immunological reaction related experiments. For more information, please consult technical personnel.



## Products Images



Western blot analysis of lysates from A431 cells,  
primary antibody was diluted at 1:1000, 4° over night