



EIF3H rabbit pAb

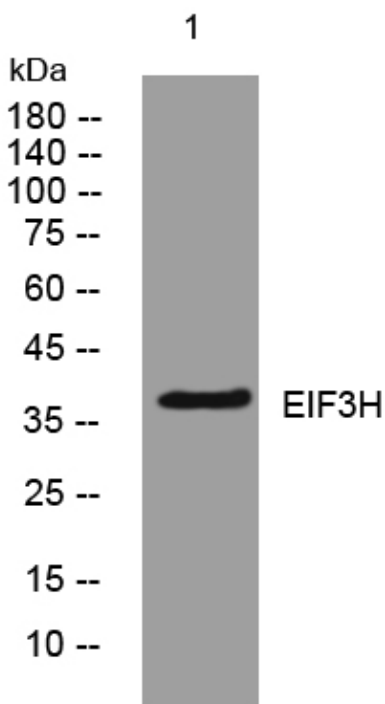
Catalog No	YP-Ab-07902
Isotype	IgG
Reactivity	Human; Mouse; Rat
Applications	WB
Gene Name	EIF3H EIF3S3
Protein Name	EIF3H
Immunogen	Synthesized peptide derived from human EIF3H AA range: 219-269
Specificity	This antibody detects endogenous levels of EIF3H at Human/Mouse/Rat
Formulation	Liquid in PBS containing 50% glycerol, 0.5% BSA and 0.16% sodium azide.
Source	Polyclonal, Rabbit, IgG
Purification	The antibody was affinity-purified from rabbit serum by affinity-chromatography using specific immunogen.
Dilution	WB 1:500-2000
Concentration	1 mg/ml
Purity	≥90%
Storage Stability	-20°C/1 year
Synonyms	Eukaryotic translation initiation factor 3 subunit H (eIF3h) (Eukaryotic translation initiation factor 3 subunit 3) (eIF-3-gamma) (eIF3 p40 subunit)
Observed Band	38kD
Cell Pathway	Cytoplasm .
Tissue Specificity	Adipose tissue, Cerebellum, Epithelium, Liver, Lung, Pituitary,
Function	function: Component of the eukaryotic translation initiation factor 3 (eIF-3) complex, which is required for several steps in the initiation of protein synthesis. The eIF-3 complex associates with the 40S ribosome and facilitates the recruitment of eIF-1, eIF-1A, eIF-2:GTP:methionyl-tRNA ⁱ and eIF-5 to form the 43S preinitiation complex (43S PIC). The eIF-3 complex stimulates mRNA recruitment to the 43S PIC and scanning of the mRNA for AUG recognition. The eIF-3 complex is also required for disassembly and recycling of posttermination ribosomal complexes and subsequently prevents premature joining of the 40S and 60S ribosomal subunits prior to initiation. ,mass spectrometry: PubMed:17322308, mass spectrometry: PubMed:18599441, similarity: Belongs to the eIF-3 subunit H family. ,similarity: Contains 1 MPN (JAB/Mov34) domain. ,subunit: Component of the eukaryotic translation initiation factor 3 (eIF
Background	

matters needing attention

Avoid repeated freezing and thawing!

Usage suggestions

This product can be used in immunological reaction related experiments. For more information, please consult technical personnel.

Products Images

Western blot analysis of lysates from HeLa cells, primary antibody was diluted at 1:1000, 4° over night