

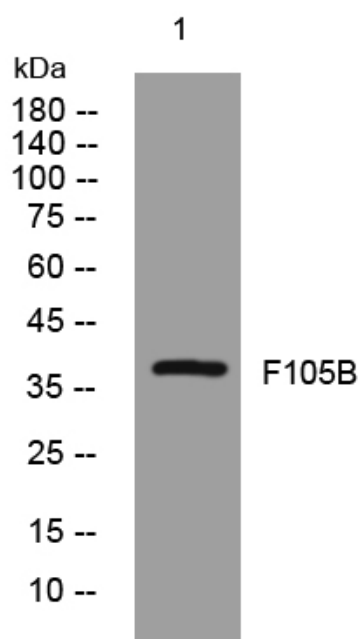


F105B rabbit pAb

Catalog No	YP-Ab-07903
Isotype	IgG
Reactivity	Human; Mouse
Applications	WB
Gene Name	FAM105B
Protein Name	F105B
Immunogen	Synthesized peptide derived from human F105B AA range: 284-334
Specificity	This antibody detects endogenous levels of F105B at Human/Mouse
Formulation	Liquid in PBS containing 50% glycerol, 0.5% BSA and 0.17% sodium azide.
Source	Polyclonal, Rabbit,IgG
Purification	The antibody was affinity-purified from rabbit serum by affinity-chromatography using specific immunogen.
Dilution	WB 1:500-2000
Concentration	1 mg/ml
Purity	≥90%
Storage Stability	-20°C/1 year
Synonyms	Protein FAM105B
Observed Band	38kD
Cell Pathway	Cytoplasm .
Tissue Specificity	Ovary,Prostate,
Function	similarity:Belongs to the FAM105 family.,
Background	This gene encodes a member of the peptidase C65 family of ubiquitin isopeptidases. Members of this family remove ubiquitin from proteins. The encoded enzyme specifically recognizes and removes M1(Met1)-linked, or linear, ubiquitin chains from protein substrates. Linear ubiquitin chains are known to regulate the NF-kappa B signaling pathway in the context of immunity and inflammation. Mutations in this gene cause a potentially fatal autoinflammatory syndrome in human patients. [provided by RefSeq, Sep 2016],
matters needing attention	Avoid repeated freezing and thawing!
Usage suggestions	This product can be used in immunological reaction related experiments. For more information, please consult technical personnel.



Products Images



Western blot analysis of lysates from HEK293 cells,
primary antibody was diluted at 1:1000, 4°over night