

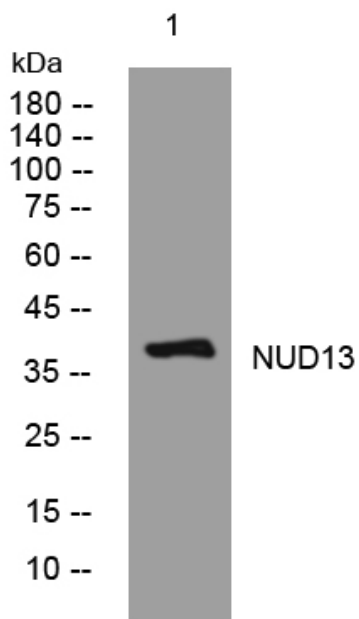


NUD13 rabbit pAb

Catalog No	YP-Ab-07907
Isotype	IgG
Reactivity	Human; Mouse
Applications	WB
Gene Name	NUDT13
Protein Name	NUD13
Immunogen	Synthesized peptide derived from human NUD13 AA range: 182-232
Specificity	This antibody detects endogenous levels of NUD13 at Human/Mouse
Formulation	Liquid in PBS containing 50% glycerol, 0.5% BSA and 0.21% sodium azide.
Source	Polyclonal, Rabbit,IgG
Purification	The antibody was affinity-purified from rabbit serum by affinity-chromatography using specific immunogen.
Dilution	WB 1:500-2000
Concentration	1 mg/ml
Purity	≥90%
Storage Stability	-20°C/1 year
Synonyms	Nucleoside diphosphate-linked moiety X motif 13 (Nudix motif 13) (EC 3.-.-.-) (Protein KiSS-16)
Observed Band	38kD
Cell Pathway	Mitochondrion .
Tissue Specificity	Highly expressed in metastasis-suppressed chromosome 6 melanoma hybrids.
Function	similarity:Contains 1 nudix hydrolase domain.,tissue specificity:Highly expressed in metastasis-suppressed chromosome 6 melanoma hybrids.,
Background	
matters needing attention	Avoid repeated freezing and thawing!
Usage suggestions	This product can be used in immunological reaction related experiments. For more information, please consult technical personnel.



Products Images



Western blot analysis of lysates from VEC cells,
primary antibody was diluted at 1:1000, 4° over night