

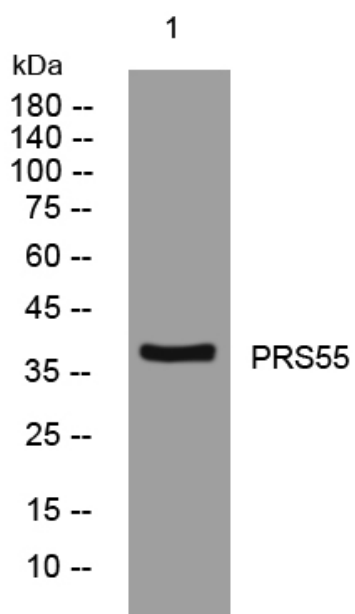


# PRS55 rabbit pAb

<b>Catalog No</b>	YP-Ab-07910
<b>Isotype</b>	IgG
<b>Reactivity</b>	Human; Mouse
<b>Applications</b>	WB
<b>Gene Name</b>	PRSS55 UNQ9391/PRO34284
<b>Protein Name</b>	PRS55
<b>Immunogen</b>	Synthesized peptide derived from human PRS55 AA range: 173-223
<b>Specificity</b>	This antibody detects endogenous levels of PRS55 at Human/Mouse
<b>Formulation</b>	Liquid in PBS containing 50% glycerol, 0.5% BSA and 0.24% sodium azide.
<b>Source</b>	Polyclonal, Rabbit,IgG
<b>Purification</b>	The antibody was affinity-purified from rabbit serum by affinity-chromatography using specific immunogen.
<b>Dilution</b>	WB 1:500-2000
<b>Concentration</b>	1 mg/ml
<b>Purity</b>	≥90%
<b>Storage Stability</b>	-20°C/1 year
<b>Synonyms</b>	Serine protease 55 (EC 3.4.21.-)
<b>Observed Band</b>	38kD
<b>Cell Pathway</b>	[Isoform 1]: Cell membrane ; Lipid-anchor, GPI-anchor . Cytoplasm, cytosol . Mainly found in the membrane part of the cells and only in small amounts in the cytosol. .; [Isoform 2]: Cytoplasm, cytosol . Present primarily in the cytosol and only in minor amounts in the membrane fraction. .
<b>Tissue Specificity</b>	Only detected in testis. Expressed in spermatogonia, spermatocytes, spermatids, Leydig and Sertoli cells. Expressed in prostate cancer and ovarian cancer (at protein level).
<b>Function</b>	function:Probable serine protease.,similarity:Belongs to the peptidase S1 family.,similarity:Contains 1 peptidase S1 domain.,
<b>Background</b>	This gene encodes a member of a group of membrane-anchored chymotrypsin (S1)-like serine proteases. The encoded protein is primarily expressed in the Leydig and Sertoli cells of the testis and may be involved in male fertility. Alternate splicing results in multiple transcript variants. [provided by RefSeq, Sep 2010],
<b>matters needing attention</b>	Avoid repeated freezing and thawing!

**Usage suggestions**

This product can be used in immunological reaction related experiments. For more information, please consult technical personnel.

**Products Images**

Western blot analysis of lysates from HpeG2 cells, primary antibody was diluted at 1:1000, 4° over night