

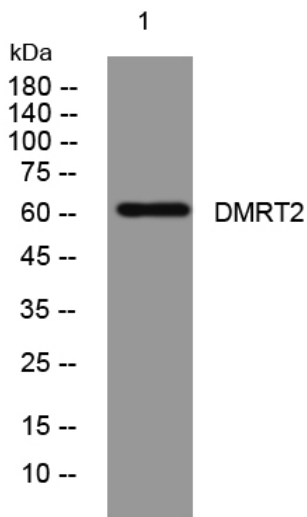


# DMRT2 rabbit pAb

<b>Catalog No</b>	YP-Ab-07971
<b>Isotype</b>	IgG
<b>Reactivity</b>	Human;Rat;Mouse;
<b>Applications</b>	WB
<b>Gene Name</b>	DMRT2 DSXL2
<b>Protein Name</b>	DMRT2
<b>Immunogen</b>	Synthesized peptide derived from human DMRT2 AA range: 315-365
<b>Specificity</b>	This antibody detects endogenous levels of DMRT2 at Human
<b>Formulation</b>	Liquid in PBS containing 50% glycerol, 0.5% BSA and 0.85% sodium azide.
<b>Source</b>	Polyclonal, Rabbit,IgG
<b>Purification</b>	The antibody was affinity-purified from rabbit serum by affinity-chromatography using specific immunogen.
<b>Dilution</b>	WB 1:500-2000
<b>Concentration</b>	1 mg/ml
<b>Purity</b>	≥90%
<b>Storage Stability</b>	-20°C/1 year
<b>Synonyms</b>	Doublesex- and mab-3-related transcription factor 2 (Doublesex-like 2 protein) (DSXL-2)
<b>Observed Band</b>	60kD
<b>Cell Pathway</b>	Nucleus .
<b>Tissue Specificity</b>	Expressed in testis, kidney and skeletal muscle.
<b>Function</b>	similarity:Belongs to the DMRT family.,similarity:Contains 1 DM DNA-binding domain.,tissue specificity:Expressed in testis, kidney and skeletal muscle.,
<b>Background</b>	The protein encoded by this gene belongs to the DMRT gene family, sharing a DM DNA-binding domain with Drosophila &apos;doublesex&apos; (dsx) and C. elegans mab3, genes involved in sex determination in these organisms. Also, this gene is located in a region of the human genome (chromosome 9p24.3) associated with gonadal dysgenesis and XY sex reversal. Hence this gene is one of the candidates for sex-determining gene(s) on chr 9. [provided by RefSeq, Apr 2010],
<b>matters needing attention</b>	Avoid repeated freezing and thawing!

**Usage suggestions**

This product can be used in immunological reaction related experiments. For more information, please consult technical personnel.

**Products Images**

Western blot analysis of lysates from A431 cells,  
primary antibody was diluted at 1:1000, 4° over night